



SZABO SCANDIC

Part of Europa Biosite

Produktinformation



Forschungsprodukte & Biochemikalien



Zellkultur & Verbrauchsmaterial



Diagnostik & molekulare Diagnostik



Laborgeräte & Service

Weitere Information auf den folgenden Seiten!
See the following pages for more information!



Lieferung & Zahlungsart

siehe unsere [Liefer- und Versandbedingungen](#)

Zuschläge

- Mindermengenzuschlag
- Trockeneiszuschlag
- Gefahrgutzuschlag
- Expressversand

SZABO-SCANDIC HandelsgmbH

Quellenstraße 110, A-1100 Wien

T. +43(0)1 489 3961-0

F. +43(0)1 489 3961-7

mail@szabo-scandic.com

www.szabo-scandic.com

[linkedin.com/company/szaboscandic](https://www.linkedin.com/company/szaboscandic) 

LRP1 purified MaxPab mouse polyclonal antibody (B01P) MaxPab®

Catalog # : H00004035-B01P

規格 : [50 ug]

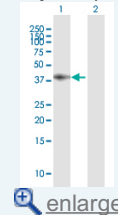
[List All](#)

Specification

Product Description:	Mouse polyclonal antibody raised against a full-length human LRP1 protein.
Immunogen:	LRP1 (AAH45107.1, 1 a.a. ~ 292 a.a) full-length human protein.
Sequence:	MLTPPLLLLLPLLSALVAAIDAPKTCSPKQFACRDQITCISKGWRCDEGRDCPDGSDEAPEICPQSKAQRCQPNEHNCGLGTELCVPMSRLCNGVQDCMDGSDEGPHCRELQGNCSRLGCQHHCVPTLDGPTCYCNSSFQLQADGKTCKDFDECSVYGTCSQLCTNTDGSFICGCVEGYLLQPDNRSCAKNEPVD RPPVLLIANSQNILATYLSGAQVSTITPTSTRQTAMDFSANETVCVVHVGD SAAQTLKCARMPGLKGFVDEHTINISLSLHLCVFSKSSQEMG
Host:	Mouse
Reactivity:	Human
Quality Control Testing:	Antibody reactive against mammalian transfected lysate.
Storage Buffer:	In 1x PBS, pH 7.4
Storage Instruction:	Store at -20°C or lower. Aliquot to avoid repeated freezing and thawing.
MSDS:	Download
Datasheet:	Download

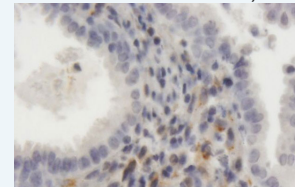
Application Image

Western Blot (Transfected lysate)



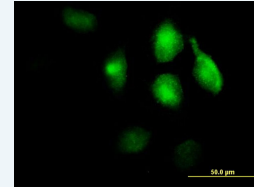
[enlarge](#)

Immunohistochemistry (Formalin/PFA-fixed paraffin-embedded sections)



[enlarge](#)

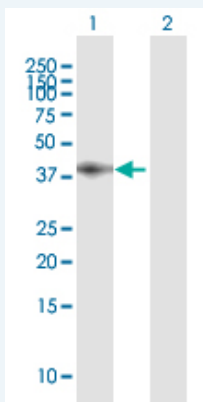
Immunofluorescence



[enlarge](#)

Applications

Western Blot (Transfected lysate)



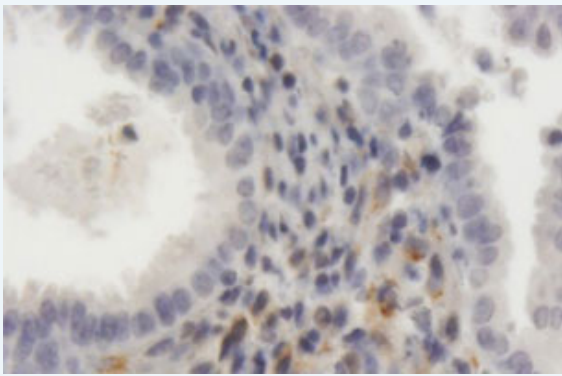
Western Blot analysis of LRP1 expression in transfected 293T cell line ([H00004035-T01](#)) by LRP1 MaxPab polyclonal antibody.

Lane 1: LRP1 transfected lysate(32.12 KDa).

Lane 2: Non-transfected lysate.

[Protocol Download](#)

Immunohistochemistry (Formalin/PFA-fixed paraffin-embedded sections)

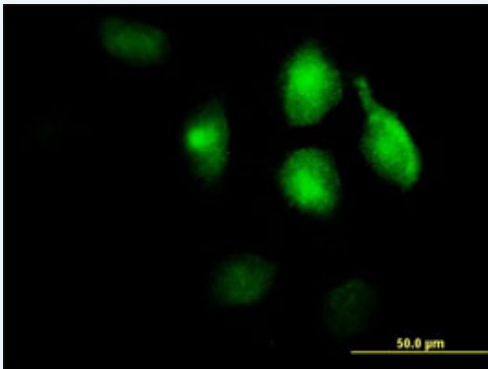


[enlarge this image](#)

Immunoperoxidase of purified MaxPab antibody to LRP1 on formalin-fixed paraffin-embedded human endometrium. [antibody concentration 3 ug/ml]

[Protocol Download](#)

Immunofluorescence



[enlarge this image](#)

Immunofluorescence of purified MaxPab antibody to LRP1 on HeLa cell. [antibody concentration 10 ug/ml]

[Protocol Download](#)

Gene Information

Entrez GeneID: [4035](#)

GeneBank [BC045107.1](#)
Accession#:

Protein [AAH45107.1](#)
Accession#:

Gene Name: LRP1

Gene Alias: A2MR,APOER,APR,CD91,FLJ16451,IGFBP3R,LRP,MGC88725,TGFBR5

Gene Description: low density lipoprotein-related protein 1 (alpha-2-macroglobulin receptor)

Omim ID: [107770](#)

Gene Ontology: [Hyperlink](#)

Other Designations: TbetaR-V/LRP-1/IGFBP-3 receptor,alpha-2-macroglobulin receptor,low density lipoprotein-related protein 1,type V tgf-beta receptor

Gene Pathway

[Alzheimer's disease](#)

Related Disease

[Alzheimer Disease](#) [Alzheimer disease](#) [Amnesia](#) [Atherosclerosis](#) [Atherosclerosis](#)

[Breast cancer](#) [Breast Neoplasms](#) [Calcinosis](#) [Carcinoma, Endometrioid](#)
[Cardiovascular Diseases](#) [Cerebral Amyloid Angiopathy](#) [Cognition Disorders](#)
[Coronary Artery Disease](#) [Coronary Disease](#) [Cystadenocarcinoma, Serous](#) [Dementia](#)
[Diabetes Complications](#) [Diabetes Mellitus, Type 2](#) [Disease Progression](#)

... see more

[服務條款](#) | [隱私權政策](#) | [著作及商標](#) | [網站地圖](#)

©2016 亞諾法生技股份有限公司 Abnova Corporation. 版權所有.