



SZABO SCANDIC

Part of Europa Biosite

Produktinformation



Forschungsprodukte & Biochemikalien



Zellkultur & Verbrauchsmaterial



Diagnostik & molekulare Diagnostik



Laborgeräte & Service

Weitere Information auf den folgenden Seiten!
See the following pages for more information!



Lieferung & Zahlungsart

siehe unsere [Liefer- und Versandbedingungen](#)

Zuschläge

- Mindermengenzuschlag
- Trockeneiszuschlag
- Gefahrgutzuschlag
- Expressversand

SZABO-SCANDIC HandelsgmbH

Quellenstraße 110, A-1100 Wien

T. +43(0)1 489 3961-0

F. +43(0)1 489 3961-7

mail@szabo-scandic.com

www.szabo-scandic.com

[linkedin.com/company/szaboscandic](https://www.linkedin.com/company/szaboscandic) 

LRP1 293T Cell Transient Overexpression Lysate(Denatured)

Catalog # : H00004035-T02

規格 : [100 uL]

[List All](#)

Specification

Transfected Cell Line: 293T

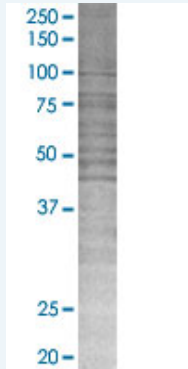
Plasmid: pCMV-LRP1 full-length

Host: Human

Theoretical MW (kDa): 31.6

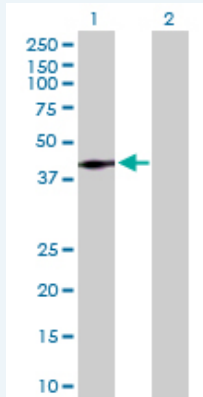
Quality Control Testing: Transient overexpression cell lysate was tested with Anti-LRP1 antibody (H00004035-D01P) by Western Blots.

SDS-PAGE Gel



LRP1 transfected lysate.

Western Blot



Lane 1: LRP1 transfected lysate (31.60 KDa)

Lane 2: Non-transfected lysate.

Storage Buffer: 1X Sample Buffer (50 mM Tris-HCl, 2% SDS, 10% glycerol, 300 mM 2-mercaptoethanol, 0.01% Bromophenol blue)

Storage Instruction: Store at -80°C. Aliquot to avoid repeated freezing and thawing.

MSDS:  [Download](#)

Applications

Western Blot

Gene Information

Entrez GeneID: [4035](#)

GeneBank [BC045107.1](#)
Accession#:

Protein [AAH45107.1](#)
Accession#:

Gene Name: LRP1

Gene Alias: [A2MR](#),[APOER](#),[APR](#),[CD91](#),[FLJ16451](#),[IGFBP3R](#),[LRP](#),[MGC88725](#),[TGFBFR5](#)

Gene Description: low density lipoprotein-related protein 1 (alpha-2-macroglobulin receptor)

Omim ID: [107770](#)

Gene Ontology: [Hyperlink](#)

Other Designations: [TbetaR-V/LRP-1/IGFBP-3 receptor](#),[alpha-2-macroglobulin receptor](#),[low density lipoprotein-related protein 1](#),[type V tgf-beta receptor](#)

Gene Pathway

[Alzheimer's disease](#)

Related Disease

[Alzheimer Disease](#) [Alzheimer disease](#) [Amnesia](#) [Atherosclerosis](#) [Atherosclerosis](#)
[Breast cancer](#) [Breast Neoplasms](#) [Calcinosis](#) [Carcinoma](#) [Endometrioid](#)
[Cardiovascular Diseases](#) [Cerebral Amyloid Angiopathy](#) [Cognition Disorders](#)
[Coronary Artery Disease](#) [Coronary Disease](#) [Cystadenocarcinoma](#) [Serous](#) [Dementia](#)
[Diabetes Complications](#) [Diabetes Mellitus](#) [Type 2](#) [Disease Progression](#)

... see more

[服務條款](#) | [隱私權政策](#) | [著作及商標](#) | [網站地圖](#)

©2016 亞諾法生技股份有限公司 Abnova Corporation. 版權所有.