



SZABO SCANDIC

Part of Europa Biosite

Produktinformation



Forschungsprodukte & Biochemikalien



Zellkultur & Verbrauchsmaterial



Diagnostik & molekulare Diagnostik



Laborgeräte & Service

Weitere Information auf den folgenden Seiten!
See the following pages for more information!



Lieferung & Zahlungsart

siehe unsere [Liefer- und Versandbedingungen](#)

Zuschläge

- Mindermengenzuschlag
- Trockeneiszuschlag
- Gefahrgutzuschlag
- Expressversand

SZABO-SCANDIC HandelsgmbH

Quellenstraße 110, A-1100 Wien

T. +43(0)1 489 3961-0

F. +43(0)1 489 3961-7

mail@szabo-scandic.com

www.szabo-scandic.com

[linkedin.com/company/szaboscandic](https://www.linkedin.com/company/szaboscandic) 

LRP5 monoclonal antibody (M01), clone 1E9

Catalog # : H00004041-M01

規格 : [100 ug]

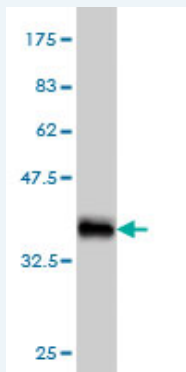
[List All](#)

Specification

Product Description:	Mouse monoclonal antibody raised against a partial recombinant LRP5.
Immunogen:	LRP5 (NP_002326.1, 41 a.a. ~ 130 a.a) partial recombinant protein with GST tag. MW of the GST tag alone is 26 KDa.
Sequence:	RDVRLVDAGGVKLESTIVSGLEDAAAVDFQFSKGAVYWTDVSEEAIKQ TYLNQTAGAAVQNVVISGLVSPDGLACDWVGKKLYWTDSETN
Host:	Mouse
Reactivity:	Human
Isotype:	IgG1 Kappa

Quality Control Antibody Reactive Against Recombinant Protein.

Testing:



Western Blot detection against Immunogen (35.64 KDa) .

Storage Buffer: In 1x PBS, pH 7.4

Storage Instruction: Store at -20°C or lower. Aliquot to avoid repeated freezing and thawing.

MSDS: [Download](#)

Datasheet: [Download](#)

Publication Reference

1. The Wnt receptor, Lrp5, is expressed by mouse mammary stem cells and is required to maintain the basal lineage.
Badders NM, Goel S, Clark RJ, Klos KS, Kim S, Bafico A, Lindvall C, Williams BO, Alexander CM. PLoS One. 2009 Aug 12;4(8):e6594.

Applications

Western Blot (Recombinant protein)

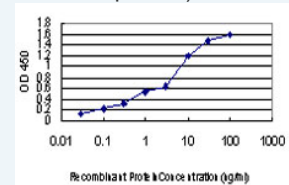
[Protocol Download](#)

Sandwich ELISA (Recombinant protein)

Application Image

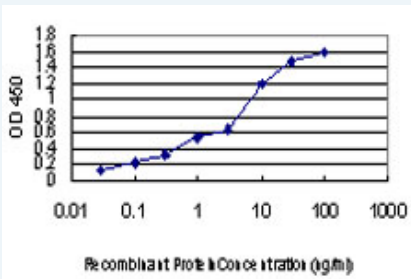
Western Blot (Recombinant protein)

Sandwich ELISA (Recombinant protein)




[enlarge](#)

ELISA



Detection limit for recombinant GST tagged LRP5 is approximately 0.1ng/ml as a capture antibody.

 [Protocol Download](#)

ELISA

Gene Information

Entrez GeneID: [4041](#)

GeneBank [NM_002335](#)

Accession#:

Protein [NP_002326.1](#)

Accession#:

Gene Name: LRP5

Gene Alias: [BMND1](#), [EVR1](#), [EVR4](#), [HBM](#), [LR3](#), [LRP7](#), [OPPG](#), [OPS](#), [OPTA1](#), [VBCH2](#)

Gene Description: low density lipoprotein receptor-related protein 5

Omim ID: [144750](#), [166710](#), [259770](#), [601813](#), [601884](#), [603506](#), [607634](#), [607636](#)

Gene Ontology: [Hyperlink](#)

Other Designations: exudative vitreoretinopathy 1, low density lipoprotein receptor-related protein 7, osteoporosis pseudoglioma syndrome

Gene Pathway

[Wnt signaling pathway](#)

Related Disease

[Alzheimer Disease](#) [Alzheimer disease](#) [Arthritis, Rheumatoid](#) [Atherosclerosis](#) [Body Weight](#) [Calcinosis](#) [Cardiovascular Diseases](#) [Cerebral Hemorrhage](#) [Coronary Artery Disease](#) [Coronary Disease](#) [Diabetes Complications](#) [Diabetes Mellitus, Type 2](#) [Edema](#) [Femoral Neck Fractures](#) [Fractures, Bone](#) [Fractures, Stress](#) [Genetic Predisposition to Disease](#) [Glioma](#) [Glucose Intolerance](#)

... see more