



SZABO SCANDIC

Part of Europa Biosite

Produktinformation



Forschungsprodukte & Biochemikalien



Zellkultur & Verbrauchsmaterial



Diagnostik & molekulare Diagnostik



Laborgeräte & Service

Weitere Information auf den folgenden Seiten!
See the following pages for more information!



Lieferung & Zahlungsart

siehe unsere [Liefer- und Versandbedingungen](#)

Zuschläge

- Mindermengenzuschlag
- Trockeneiszuschlag
- Gefahrgutzuschlag
- Expressversand

SZABO-SCANDIC HandelsgmbH

Quellenstraße 110, A-1100 Wien

T. +43(0)1 489 3961-0

F. +43(0)1 489 3961-7

mail@szabo-scandic.com

www.szabo-scandic.com

[linkedin.com/company/szaboscandic](https://www.linkedin.com/company/szaboscandic) 

LSP1 monoclonal antibody (M07), clone 1C4

Catalog # : H00004046-M07

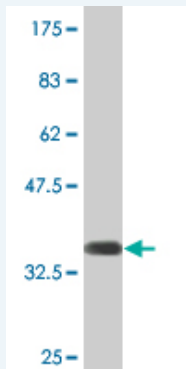
規格 : [100 ug]

[List All](#)

Specification

Product Description:	Mouse monoclonal antibody raised against a partial recombinant LSP1.
Immunogen:	LSP1 (NP_002330.1, 240 a.a. ~ 338 a.a) partial recombinant protein with GST tag. MW of the GST tag alone is 26 KDa.
Sequence:	TAGRTPKLARQASIELPSMAVASTKSRWETGEVQAQSAAKTPSCKDIVA GDMSKKSLWEQKGGSKTSSTIKSTPSGKRYKFVATGHGKYEKVLVEGG PA
Host:	Mouse
Reactivity:	Human
Isotype:	IgG2a Kappa

Quality Control Testing: Antibody Reactive Against Recombinant Protein.



Western Blot detection against Immunogen (36.63 KDa) .

Storage Buffer: In 1x PBS, pH 7.4

Storage Instruction: Store at -20°C or lower. Aliquot to avoid repeated freezing and thawing.

MSDS: [Download](#)

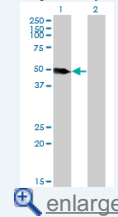
Datasheet: [Download](#)

Applications

Western Blot (Transfected lysate)

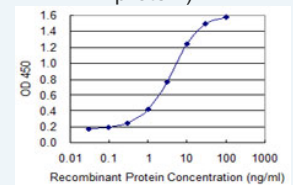
Application Image

Western Blot (Transfected lysate)



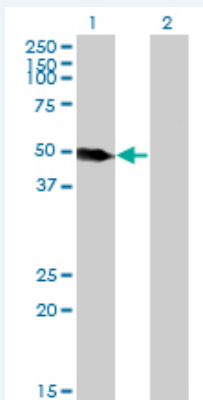
Western Blot (Recombinant protein)

Sandwich ELISA (Recombinant protein)



[enlarge](#)

ELISA



Western Blot analysis of LSP1 expression in transfected 293T cell line by LSP1 monoclonal antibody (M07), clone 1C4.

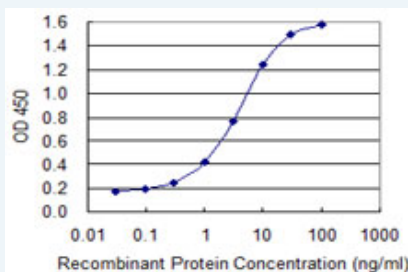
Lane 1: LSP1 transfected lysate(37.2 KDa).
Lane 2: Non-transfected lysate.

[Protocol Download](#)

Western Blot (Recombinant protein)

[Protocol Download](#)

Sandwich ELISA (Recombinant protein)



Detection limit for recombinant GST tagged LSP1 is 0.1 ng/ml as a capture antibody.

[Protocol Download](#)

ELISA

Gene Information

Entrez GeneID: [4046](#)

GeneBank [NM_002339](#)

Accession#:

Protein [NP_002330.1](#)

Accession#:

Gene Name: LSP1

Gene Alias: WP34,pp52

Gene lymphocyte-specific protein 1

Description:

Omim ID: [153432](#)

Gene Ontology: [Hyperlink](#)

Gene Summary: This gene encodes an intracellular F-actin binding protein. The protein is expressed in lymphocytes, neutrophils, macrophages, and endothelium and may regulate neutrophil motility, adhesion to fibrinogen matrix proteins, and transendothelial migration. Alternative splicing results in multiple transcript variants encoding different isoforms. [provided by RefSeq]

Other 47 kDa actin binding protein,52 kDa phosphoprotein,F-actin binding
Designations: and cytoskeleton associated
protein,OTTHUMP00000014139,OTTHUMP00000069612,leufactin
(leukocyte F-actin binding protein),leukocyte-specific protein
1,lymphocyte-specific antigen WP34,lympho

Related Disease

[Adenocarcinoma](#) [Birth Weight](#) [Breast cancer](#) [Breast Neoplasms](#) [Cardiovascular Diseases](#)
[Diabetes Mellitus, Type 2](#) [Disease Susceptibility](#) [Edema](#) [Genetic Predisposition to Disease](#)
[Inflammation](#) [Lymphatic Metastasis](#) [Lymphoma, Non-Hodgkin](#) [Neoplasm Invasiveness](#)
[Ovarian cancer](#) [Ovarian Neoplasms](#) [Pancreatic Neoplasms](#)

[服務條款](#) | [隱私權政策](#) | [著作及商標](#) | [網站地圖](#)

©2016 亞諾法生技股份有限公司 Abnova Corporation. 版權所有.