



# SZABO SCANDIC

Part of Europa Biosite

## Produktinformation



Forschungsprodukte & Biochemikalien



Zellkultur & Verbrauchsmaterial



Diagnostik & molekulare Diagnostik



Laborgeräte & Service

Weitere Information auf den folgenden Seiten!  
See the following pages for more information!



### Lieferung & Zahlungsart

siehe unsere [Liefer- und Versandbedingungen](#)

### Zuschläge

- Mindermengenzuschlag
- Trockeneiszuschlag
- Gefahrgutzuschlag
- Expressversand

### SZABO-SCANDIC HandelsgmbH

Quellenstraße 110, A-1100 Wien

T. +43(0)1 489 3961-0

F. +43(0)1 489 3961-7

[mail@szabo-scandic.com](mailto:mail@szabo-scandic.com)

[www.szabo-scandic.com](http://www.szabo-scandic.com)

[linkedin.com/company/szaboscandic](https://www.linkedin.com/company/szaboscandic) 

## LSS monoclonal antibody (M01), clone 2E4

Catalog # : H00004047-M01

規格 : [ 100 ug ]

[List All](#)

### Specification

**Product Description:** Mouse monoclonal antibody raised against a partial recombinant LSS.

**Immunogen:** LSS (NP\_001001438.1, 633 a.a. ~ 732 a.a) partial recombinant protein with GST tag. MW of the GST tag alone is 26 KDa.

**Sequence:** FESCEERRYLQSAQSQIHNTCWAMMGLMAVRHPDIEAQERGVRCLLEK  
QLPNGDWPQENIAGVFNKSCAISYTSYRNIFPIWALGRFSQLYPERALAG  
HP

**Host:** Mouse

**Reactivity:** Human

**Isotype:** IgG1

**Quality Control Testing:** Antibody Reactive Against Recombinant Protein.

**Storage Buffer:** In 1x PBS, pH 7.4

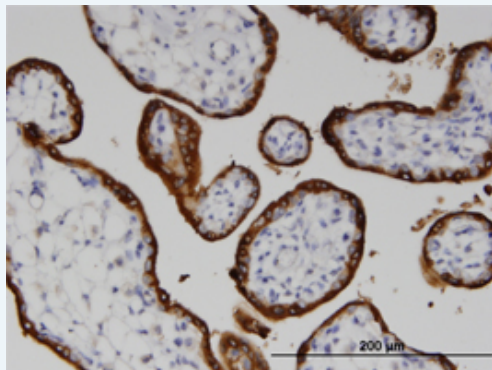
**Storage Instruction:** Store at -20°C or lower. Aliquot to avoid repeated freezing and thawing.


**MSDS:**  [Download](#)

**Datasheet:**  [Download](#)

### Applications

#### Immunohistochemistry (Formalin/PFA-fixed paraffin-embedded sections)



 [enlarge this image](#)

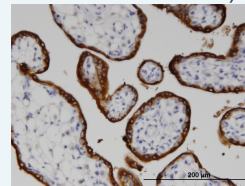
Immunoperoxidase of monoclonal antibody to LSS on formalin-fixed paraffin-embedded human placenta. [antibody concentration 3 ug/ml]


 [Protocol Download](#)

#### Immunofluorescence

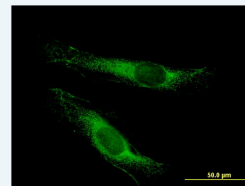
### Application Image


Immunohistochemistry  
(Formalin/PFA-fixed paraffin-embedded sections)



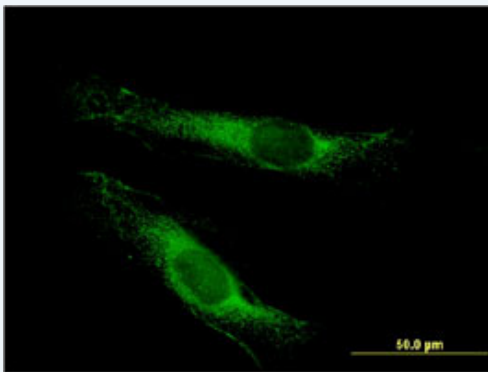
 [enlarge](#)

Immunofluorescence



 [enlarge](#)

ELISA



[enlarge this image](#)

Immunofluorescence of monoclonal antibody to LSS on HeLa cell . [antibody concentration 10 ug/ml]

[Protocol Download](#)

## ELISA

## Gene Information

**Entrez GeneID:** [4047](#)

**GeneBank Accession#:** [NM\\_001001438](#)

**Protein Accession#:** [NP\\_001001438.1](#)

**Gene Name:** LSS

**Gene Alias:** FLJ25486,FLJ35015,FLJ39450,FLJ46393,OSC

**Gene Description:** lanosterol synthase (2,3-oxidosqualene-lanosterol cyclase)

**Omim ID:** [600909](#)

**Gene Ontology:** [Hyperlink](#)

**Gene Summary:** The protein encoded by this gene catalyzes the conversion of (S)-2,3 oxidosqualene to lanosterol. The encoded protein is a member of the terpene cyclase/mutase family and catalyzes the first step in the biosynthesis of cholesterol, steroid hormones, and vitamin D. Alternative splicing results in multiple transcript variants encoding different isoforms

**Other Designations:** 2,3-epoxysqualene--lanosterol cyclase,lanosterol synthase

## Gene Pathway

[Biosynthesis of alkaloids derived from terpenoid and polyketide](#) [Metabolic pathways](#)  
[Steroid biosynthesis](#)

## Related Disease

[Cardiovascular Diseases](#) [Diabetes Mellitus, Type 2](#) [Edema](#) [Tobacco Use Disorder](#)