



# SZABO SCANDIC

Part of Europa Biosite

## Produktinformation



Forschungsprodukte & Biochemikalien



Zellkultur & Verbrauchsmaterial



Diagnostik & molekulare Diagnostik



Laborgeräte & Service

Weitere Information auf den folgenden Seiten!  
See the following pages for more information!



### Lieferung & Zahlungsart

siehe unsere [Liefer- und Versandbedingungen](#)

### Zuschläge

- Mindermengenzuschlag
- Trockeneiszuschlag
- Gefahrgutzuschlag
- Expressversand

### SZABO-SCANDIC HandelsgmbH

Quellenstraße 110, A-1100 Wien

T. +43(0)1 489 3961-0

F. +43(0)1 489 3961-7

[mail@szabo-scandic.com](mailto:mail@szabo-scandic.com)

[www.szabo-scandic.com](http://www.szabo-scandic.com)

[linkedin.com/company/szaboscandic](https://www.linkedin.com/company/szaboscandic) 

## LTA monoclonal antibody (M02), clone 2B6

Catalog # : H00004049-M02

規格 : [ 100 ug ]

[List All](#)

### Specification

**Product Description:** Mouse monoclonal antibody raised against a partial recombinant LTA.

**Immunogen:** Recombinant Flag/His fusion protein corresponding to amino acids 58-205 of human LTA.

**Sequence:** HSTLKPA AHLIGDPSKQNSLLWRANTDRAFLQDGFSLSNNSLLVPTSGIY  
FVYSQVVFSGKAYSPKATSSPLYLAHEVQLFSSQYPFHVPLLSSQKMY  
PGLQEPWLHSMYHGAAFQLTQGDQLSTHTDGIPHLVLPSTVFFGAFAL

**Host:** Mouse

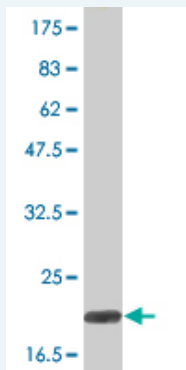
**Reactivity:** Human

**Form:** Liquid

**Conjugation:** Flag/His

**Isotype:** IgG1, kappa

**Quality Control Testing:** Antibody Reactive Against Recombinant Protein.



Western Blot detection against Immunogen (19.69 KDa) .

**Recommend Usage:** The optimal working dilution should be determined by the end user.

**Storage Buffer:** In PBS, pH 7.2

**Storage Instruction:** Store at -20°C or lower. Aliquot to avoid repeated freezing and thawing.

**Datasheet:** [Download](#)

### Applications

**Western Blot (Recombinant protein)**

[Protocol Download](#)

**ELISA**

## Gene Information

Entrez GeneID: [4049](#)

GeneBank  
Accession#: [BC034729.1](#)

Protein  
Accession#: [AAH34729.1](#)

Gene Name: LTA

Gene Alias: LT,TNFB,TNFSF1

Gene  
Description: lymphotoxin alpha (TNF superfamily, member 1)

Omim ID: [153440](#)

Gene Ontology: [Hyperlink](#)

**Gene Summary:** The encoded protein, a member of the tumor necrosis factor family, is a cytokine produced by lymphocytes. The protein is highly inducible, secreted, and forms heterotrimers with lymphotoxin-beta which anchor lymphotoxin-alpha to the cell surface. This protein also mediates a large variety of inflammatory, immunostimulatory, and antiviral responses, is involved in the formation of secondary lymphoid organs during development and plays a role in apoptosis. Genetic variations in this gene are associated with susceptibility to leprosy type 4 and psoriatic arthritis

**Other Designations:** OTTHUMP00000029184,OTTHUMP00000037612,OTTHUMP00000037613,OTTHUMP000000165897,lymphotoxin alpha,tumor necrosis factor beta

## Gene Pathway

[Antigen processing and presentation](#) [Cytokine-cytokine receptor interaction](#)  
[Type I diabetes mellitus](#)

## Related Disease

[Abortion, Habitual Abortion, Spontaneous Acute Disease Adenocarcinoma](#)  
[Adenomatous Polyps AIDS-Related Opportunistic Infections Alcoholism Alzheimer Disease](#)  
[Alzheimer disease Amyotrophic Lateral Sclerosis Amyotrophic lateral sclerosis](#)  
[Arterial Occlusive Diseases Arteriosclerosis Arthralgia Arthritis](#)  
[Arthritis, Juvenile Rheumatoid Arthritis, Psoriatic Arthritis, Rheumatoid Aspergillosis](#)

... see more

[服務條款](#) | [隱私權政策](#) | [著作及商標](#) | [網站地圖](#)

©2016 亞諾法生技股份有限公司 Abnova Corporation. 版權所有.