



SZABO SCANDIC

Part of Europa Biosite

Produktinformation



Forschungsprodukte & Biochemikalien



Zellkultur & Verbrauchsmaterial



Diagnostik & molekulare Diagnostik



Laborgeräte & Service

Weitere Information auf den folgenden Seiten!
See the following pages for more information!



Lieferung & Zahlungsart

siehe unsere [Liefer- und Versandbedingungen](#)

Zuschläge

- Mindermengenzuschlag
- Trockeneiszuschlag
- Gefahrgutzuschlag
- Expressversand

SZABO-SCANDIC HandelsgmbH

Quellenstraße 110, A-1100 Wien

T. +43(0)1 489 3961-0

F. +43(0)1 489 3961-7

mail@szabo-scandic.com

www.szabo-scandic.com

[linkedin.com/company/szaboscandic](https://www.linkedin.com/company/szaboscandic) 

CYP4F3 monoclonal antibody (M01), clone 4E11

Catalog # : H00004051-M01

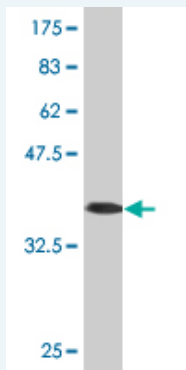
規格 : [100 ug]

[List All](#)

Specification

Product Description:	Mouse monoclonal antibody raised against a partial recombinant CYP4F3.
Immunogen:	CYP4F3 (NP_000887, 100 a.a. ~ 198 a.a) partial recombinant protein with GST tag. MW of the GST tag alone is 26 KDa.
Sequence:	RIFHPTYIKPVLFAAAIVPKDKVFYSFLKPWLGDGLLSAGEKWSRHRR MLTPAFHFNILKPYMKIFNESVNIMHAKWQLLASEGSARLDMFEHISM
Host:	Mouse
Reactivity:	Human
Isotype:	IgG2b Kappa

Quality Control Testing: Antibody Reactive Against Recombinant Protein.



Western Blot detection against Immunogen (36.63 KDa) .

Storage Buffer: In 1x PBS, pH 7.4

Storage Instruction: Store at -20°C or lower. Aliquot to avoid repeated freezing and thawing.

MSDS: [Download](#)

Datasheet: [Download](#)

Applications

Western Blot (Recombinant protein)

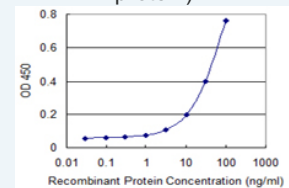
[Protocol Download](#)

Sandwich ELISA (Recombinant protein)

Application Image

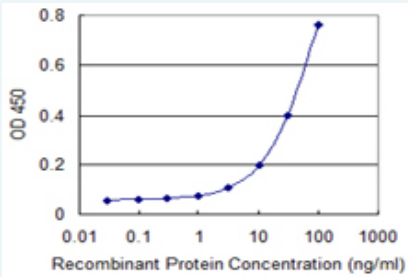
Western Blot (Recombinant protein)

Sandwich ELISA (Recombinant protein)



[enlarge](#)

ELISA



Detection limit for recombinant GST tagged CYP4F3 is 1 ng/ml as a capture antibody.

 [Protocol Download](#)

ELISA

Gene Information

Entrez GeneID: [4051](#)

GeneBank [NM_000896](#)

Accession#:

Protein [NP_000887](#)

Accession#:

Gene Name: CYP4F3

Gene Alias: CPF3,CYP4F,LTB4H

Gene Description: cytochrome P450, family 4, subfamily F, polypeptide 3

Omim ID: [601270](#)

Gene Ontology: [Hyperlink](#)

Gene Summary: This gene, CYP4F3, encodes a member of the cytochrome P450 superfamily of enzymes. The cytochrome P450 proteins are monooxygenases which catalyze many reactions involved in drug metabolism and synthesis of cholesterol, steroids and other lipids. This protein localizes to the endoplasmic reticulum. The enzyme starts the process of inactivating and degrading leukotriene B4, a potent mediator of inflammation. This gene is part of a cluster of cytochrome P450 genes on chromosome 19. Another member of this family, CYP4F8, is approximately 18 kb away. [provided by RefSeq]

Other Designations: cytochrome P-450,cytochrome P450, subfamily IVF, polypeptide 3 (leukotriene B4 omega hydroxylase),cytochrome P450-LTB-omega,leukotriene B4 omega hydroxylase,leukotriene-B4 20-monooxygenase

Gene Pathway

[Arachidonic acid metabolism](#) [Metabolic pathways](#)