



SZABO SCANDIC

Part of Europa Biosite

Produktinformation



Forschungsprodukte & Biochemikalien



Zellkultur & Verbrauchsmaterial



Diagnostik & molekulare Diagnostik



Laborgeräte & Service

Weitere Information auf den folgenden Seiten!
See the following pages for more information!



Lieferung & Zahlungsart

siehe unsere [Liefer- und Versandbedingungen](#)

Zuschläge

- Mindermengenzuschlag
- Trockeneiszuschlag
- Gefahrgutzuschlag
- Expressversand

SZABO-SCANDIC HandelsgmbH

Quellenstraße 110, A-1100 Wien

T. +43(0)1 489 3961-0

F. +43(0)1 489 3961-7

mail@szabo-scandic.com

www.szabo-scandic.com

[linkedin.com/company/szaboscandic](https://www.linkedin.com/company/szaboscandic) 

LTBP2 monoclonal antibody (M01), clone 5D7

Catalog # : H00004053-M01

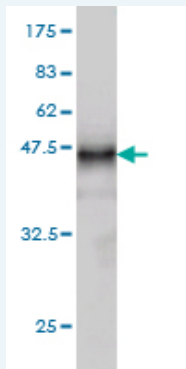
規格 : [100 ug]

[List All](#)

Specification

Product Description:	Mouse monoclonal antibody raised against a partial recombinant LTBP2.
Immunogen:	LTBP2 (NP_000419, 1709 a.a. ~ 1818 a.a) partial recombinant protein with GST tag. MW of the GST tag alone is 26 KDa.
Sequence:	LQPSELQPHYVASHPEPPAGFEGLQAEECGILNGCENGRCVRVREGYT CDCFEGFQLDAAHMACVDVNECDDLNGPAVLCVHGYCENTEGSYRCH CSPGYVAEAGPPHCT
Host:	Mouse
Reactivity:	Human
Isotype:	IgG2a Kappa

Quality Control Testing: Antibody Reactive Against Recombinant Protein.



Western Blot detection against Immunogen (37.84 KDa) .

Storage Buffer: In 1x PBS, pH 7.4

Storage Instruction: Store at -20°C or lower. Aliquot to avoid repeated freezing and thawing.

MSDS: [Download](#)

Datasheet: [Download](#)

Applications

Western Blot (Recombinant protein)

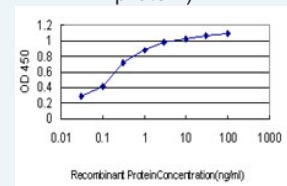
[Protocol Download](#)

Sandwich ELISA (Recombinant protein)

Application Image

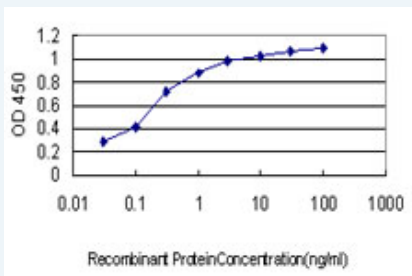
Western Blot (Recombinant protein)

Sandwich ELISA (Recombinant protein)



[enlarge](#)

ELISA



Detection limit for recombinant GST tagged LTBP2 is approximately 0.03ng/ml as a capture antibody.

 [Protocol Download](#)

ELISA

Gene Information

Entrez GeneID: [4053](#)

GeneBank [NM_000428](#)

Accession#:

Protein [NP_000419](#)

Accession#:

Gene Name: LTBP2

Gene Alias: C14orf141,LTBP3,MSTP031

Gene Description: latent transforming growth factor beta binding protein 2

Omim ID: [602091](#)

Gene Ontology: [Hyperlink](#)

Gene Summary: The protein encoded by this gene belongs to the family of latent transforming growth factor (TGF)-beta binding proteins (LTBP), which are extracellular matrix proteins with multi-domain structure. This protein is the largest member of the LTBP family possessing unique regions and with most similarity to the fibrillins. It has thus been suggested that it may have multiple functions: as a member of the TGF-beta latent complex, as a structural component of microfibrils, and a role in cell adhesion. [provided by RefSeq]

Other Designations: -

Related Disease

[Carcinoma, Hepatocellular](#) [Cerebral Hemorrhage Disease Progression](#)
[Exfoliation Syndrome](#) [Genetic Predisposition to Disease](#) [Glaucoma](#) [Glaucoma, Open-Angle](#)
[Hepatitis C](#) [Hepatitis C, Chronic](#) [Hyperparathyroidism, Secondary](#) [Hypertension](#)
[Intracranial Hemorrhages](#) [Liver Cirrhosis](#) [Liver Neoplasms](#) [Stroke](#)
[Subarachnoid Hemorrhage](#) [Viremia](#)