



# SZABO SCANDIC

Part of Europa Biosite

## Produktinformation



Forschungsprodukte & Biochemikalien



Zellkultur & Verbrauchsmaterial



Diagnostik & molekulare Diagnostik



Laborgeräte & Service

Weitere Information auf den folgenden Seiten!  
See the following pages for more information!



### Lieferung & Zahlungsart

siehe unsere [Liefer- und Versandbedingungen](#)

### Zuschläge

- Mindermengenzuschlag
- Trockeneiszuschlag
- Gefahrgutzuschlag
- Expressversand

### SZABO-SCANDIC HandelsgmbH

Quellenstraße 110, A-1100 Wien

T. +43(0)1 489 3961-0

F. +43(0)1 489 3961-7

[mail@szabo-scandic.com](mailto:mail@szabo-scandic.com)

[www.szabo-scandic.com](http://www.szabo-scandic.com)

[linkedin.com/company/szaboscandic](https://www.linkedin.com/company/szaboscandic) 

## BCAM polyclonal antibody (A01)

Catalog # : H00004059-A01

規格 : [ 50 uL ]

List All

### Specification

**Product Description:** Mouse polyclonal antibody raised against a partial recombinant BCAM.

**Description:**

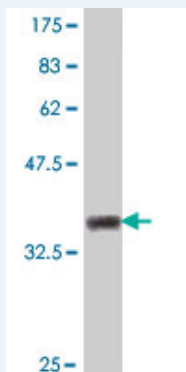
**Immunogen:** BCAM (NP\_005572, 32 a.a. ~ 131 a.a) partial recombinant protein with GST tag.

**Sequence:** EVRLSVPLVEVMRGKSVILDCTPTGTHDHYMLEWFLTD RSGARPRLAS AEMQGSELQVTMHDTRGRSPPYQLDSQGRLVLAEAQVGDERDYVCV RAGA

**Host:** Mouse

**Reactivity:** Human

**Quality Control Testing:** Antibody Reactive Against Recombinant Protein.



Western Blot detection against Immunogen (37.11 kDa) .

**Storage Buffer:** 50 % glycerol

**Storage Instruction:** Store at -20°C or lower. Aliquot to avoid repeated freezing and thawing.

**MSDS:** [Download](#)

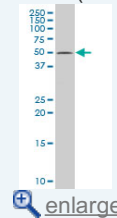
**Datasheet:** [Download](#)

### Applications

Western Blot (Cell lysate)

### Application Image

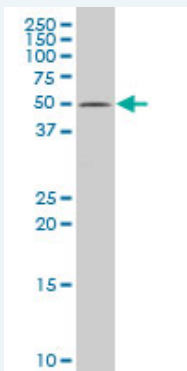
Western Blot (Cell lysate)



[enlarge](#)

Western Blot (Recombinant protein)

ELISA



BCAM polyclonal antibody (A01), Lot # 050921JC01 Western Blot analysis of BCAM expression in HepG2 ( Cat # L019V1 ).

 [Protocol Download](#)

#### Western Blot (Recombinant protein)

 [Protocol Download](#)

#### ELISA

#### Gene Information

**Entrez GeneID:** [4059](#)

**GeneBank** [NM\\_005581](#)

**Accession#:**

**Protein** [NP\\_005572](#)

**Accession#:**

**Gene Name:** BCAM

**Gene Alias:** AU,CD239,LU,MSK19

**Gene** basal cell adhesion molecule (Lutheran blood group)

**Description:**

**Omim ID:** [111200](#)

**Gene Ontology:** [Hyperlink](#)

**Gene Summary:** Lutheran blood group glycoprotein is a member of the immunoglobulin superfamily and a receptor for the extracellular matrix protein, laminin. The protein contains five, N-terminus, extracellular immunoglobulin domains, a single transmembrane domain, and a short, C-terminal cytoplasmic tail. This protein may play a role in epithelial cell cancer and in vaso-occlusion of red blood cells in sickle cell disease. Two transcript variants encoding different isoforms have been found for this gene. [provided by RefSeq]

**Other Designations:** Auberger b antigen,B-CAM cell surface glycoprotein,B-cell adhesion molecule,F8/G253 antigen,Lutheran blood group (Auberger b antigen included),antigen identified by monoclonal antibody F8,basal cell adhesion molecule,basal cell adhesion molecule (Lu and A

#### Related Disease

[Cardiovascular Diseases](#)