



SZABO SCANDIC

Part of Europa Biosite

Produktinformation



Forschungsprodukte & Biochemikalien



Zellkultur & Verbrauchsmaterial



Diagnostik & molekulare Diagnostik



Laborgeräte & Service

Weitere Information auf den folgenden Seiten!
See the following pages for more information!



Lieferung & Zahlungsart

siehe unsere [Liefer- und Versandbedingungen](#)

Zuschläge

- Mindermengenzuschlag
- Trockeneiszuschlag
- Gefahrgutzuschlag
- Expressversand

SZABO-SCANDIC HandelsgmbH

Quellenstraße 110, A-1100 Wien

T. +43(0)1 489 3961-0

F. +43(0)1 489 3961-7

mail@szabo-scandic.com

www.szabo-scandic.com

[linkedin.com/company/szaboscandic](https://www.linkedin.com/company/szaboscandic) 

LUM purified MaxPab mouse polyclonal antibody (B01P) MaxPab®

Catalog # : H00004060-B01P

規格 : [50 ug]

List All

Specification

Product Description: Mouse polyclonal antibody raised against a full-length human LUM protein.

Immunogen: LUM (NP_002336, 1 a.a. ~ 338 a.a) full-length human protein.

Sequence:
 MSLSAFTLFLALIGGTSGQYYDYDFPLSIYGQSSPNCAPPECNCPESYPSA
 MYCDELKLSVPMVPPGIKYLRLNNQIDHIDEKAFENVTLQWLILDHNL
 LENSKIKGRVFSKLRKQLKLLHINHNLTESVGPLPKSLEDLQLTHNKITKLG
 SFEGLVNLTFIHLQHNRLKEDAVSAAFGLKSLEYLDLSFNQIARLPGLP
 VSLTLYLDNKNISNPDEYFKRFNALQYLRLSHNELADSGIPGNSFNVSSL
 VELDLSYNKLNKIPTVNEENLENYYLEVNQLEKFDIKSFCKILGPLSYSKIKHL
 RLDGNRISSETSLPPDMECLRVANEVTLN

Host: Mouse

Reactivity: Human

Quality Control Testing: Antibody reactive against mammalian transfected lysate.

Storage Buffer: In 1x PBS, pH 7.4

Storage Instruction: Store at -20°C or lower. Aliquot to avoid repeated freezing and thawing.

MSDS:  [Download](#)

Datasheet:  [Download](#)

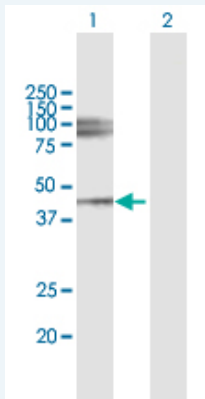
Application Image

Western Blot (Transfected lysate)



Applications

Western Blot (Transfected lysate)



Western Blot analysis of LUM expression in transfected 293T cell line by LUM MaxPab polyclonal antibody.

Lane 1: LUM transfected lysate(37.18 KDa).

Lane 2: Non-transfected lysate.

 [Protocol Download](#)

Gene Information

Entrez GeneID: [4060](#)

**GeneBank
Accession#:** [NM_002345](#)

**Protein
Accession#:** [NP_002336](#)

Gene Name: LUM

Gene Alias: LDC,SLRR2D

**Gene
Description:** lumican

Omim ID: [600616](#)

Gene Ontology: [Hyperlink](#)

Gene Summary: This gene encodes a member of the small leucine-rich proteoglycan (SLRP) family that includes decorin, biglycan, fibromodulin, keratocan, epiphycan, and osteoglycin. In these bifunctional molecules, the protein moiety binds collagen fibrils and the highly charged hydrophilic glycosaminoglycans regulate interfibrillar spacings. Lumican is the major keratan sulfate proteoglycan of the cornea but is also distributed in interstitial collagenous matrices throughout the body. Lumican may regulate collagen fibril organization and circumferential growth, corneal transparency, and epithelial cell migration and tissue repair. [provided by RefSeq]

**Other
Designations:** lumican proteoglycan

Related Disease

[Adenocarcinoma](#) [Breast cancer](#) [Breast Neoplasms](#) [Cardiovascular Diseases](#)
[Diabetes Mellitus, Type 2](#) [Edema](#) [Genetic Predisposition to Disease](#) [Myopia](#)
[Myopia, Degenerative](#) [Neoplasm Invasiveness](#) [Pancreatic Neoplasms](#)