



SZABO SCANDIC

Part of Europa Biosite

Produktinformation



Forschungsprodukte & Biochemikalien



Zellkultur & Verbrauchsmaterial



Diagnostik & molekulare Diagnostik



Laborgeräte & Service

Weitere Information auf den folgenden Seiten!
See the following pages for more information!



Lieferung & Zahlungsart

siehe unsere [Liefer- und Versandbedingungen](#)

Zuschläge

- Mindermengenzuschlag
- Trockeneiszuschlag
- Gefahrgutzuschlag
- Expressversand

SZABO-SCANDIC HandelsgmbH

Quellenstraße 110, A-1100 Wien

T. +43(0)1 489 3961-0

F. +43(0)1 489 3961-7

mail@szabo-scandic.com

www.szabo-scandic.com

[linkedin.com/company/szaboscandic](https://www.linkedin.com/company/szaboscandic) 

LY6H monoclonal antibody (M01), clone 3E10

Catalog # : H00004062-M01

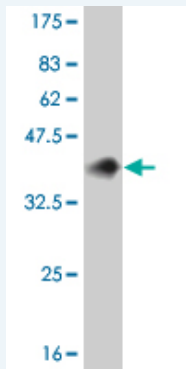
規格 : [100 ug]

[List All](#)

Specification

Product Description:	Mouse monoclonal antibody raised against a full length recombinant LY6H.
Immunogen:	LY6H (AAH28894, 26 a.a. ~ 140 a.a) full-length recombinant protein with GST tag. MW of the GST tag alone is 26 KDa.
Sequence:	LWCQDCTLTTNSSHCTPKQCQPSDTCASVRITDPSSSRKDHSVNMKMC ASSCDFVKRHHFFSDYLMGFINSGLKVDVDCCEKDLCSGAAGAGHSPWA LAGLLLLSLGPALLWAGP
Host:	Mouse
Reactivity:	Human
Isotype:	IgG1 Kappa

Quality Control Testing: Antibody Reactive Against Recombinant Protein.



Western Blot detection against Immunogen (38.39 KDa) .

Storage Buffer: In 1x PBS, pH 7.4

Storage Instruction: Store at -20°C or lower. Aliquot to avoid repeated freezing and thawing.

MSDS: [Download](#)

Datasheet: [Download](#)

Publication Reference

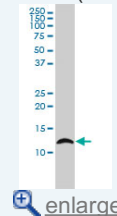
1. [Quantitative profiling of brain lipid raft proteome in a mouse model of fragile x syndrome.](#)
Kalinowska M, Castillo C, Francesconi APLoS One. 2015 Apr 7;10(4):e0121464. doi: 10.1371/journal.pone.0121464. eCollection 2015.

Applications

Western Blot (Cell lysate)

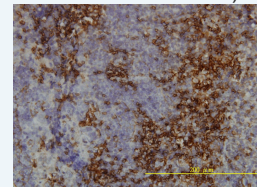
Application Image

Western Blot (Cell lysate)



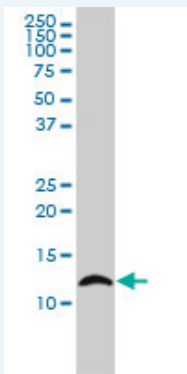
Western Blot (Recombinant protein)

Immunohistochemistry (Formalin/PFA-fixed paraffin-embedded sections)



Sandwich ELISA (Recombinant protein)

ELISA



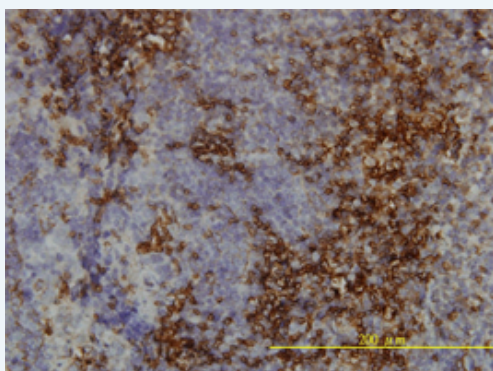
LY6H monoclonal antibody (M01), clone 3E10 Western Blot analysis of LY6H expression in K-562 (Cat # L009V1).

[Protocol Download](#)

Western Blot (Recombinant protein)

[Protocol Download](#)

Immunohistochemistry (Formalin/PFA-fixed paraffin-embedded sections)



[enlarge this image](#)

Immunoperoxidase of monoclonal antibody to LY6H on formalin-fixed paraffin-embedded human tonsil tissue. [antibody concentration 2 ug/ml]

[Protocol Download](#)

Sandwich ELISA (Recombinant protein)

Detection limit for recombinant GST tagged LY6H is approximately 0.1ng/ml as a capture antibody.

[Protocol Download](#)

ELISA

Gene Information

Entrez GeneID: [4062](#)

GeneBank [BC028894](#)

Accession#:

Protein [AAH28894](#)

Accession#:

Gene Name: LY6H

Gene Alias: NMLY6

Gene Description: lymphocyte antigen 6 complex, locus H

Omim ID: [603625](#)

Gene Ontology: [Hyperlink](#)

Other -

Designations:

[服務條款](#) | [隱私權政策](#) | [著作及商標](#) | [網站地圖](#)

©2016 亞諾法生技股份有限公司 Abnova Corporation. 版權所有.