



# SZABO SCANDIC

Part of Europa Biosite

## Produktinformation



Forschungsprodukte & Biochemikalien



Zellkultur & Verbrauchsmaterial



Diagnostik & molekulare Diagnostik



Laborgeräte & Service

Weitere Information auf den folgenden Seiten!  
See the following pages for more information!



### Lieferung & Zahlungsart

siehe unsere [Liefer- und Versandbedingungen](#)

### Zuschläge

- Mindermengenzuschlag
- Trockeneiszuschlag
- Gefahrgutzuschlag
- Expressversand

### SZABO-SCANDIC HandelsgmbH

Quellenstraße 110, A-1100 Wien

T. +43(0)1 489 3961-0

F. +43(0)1 489 3961-7

[mail@szabo-scandic.com](mailto:mail@szabo-scandic.com)

[www.szabo-scandic.com](http://www.szabo-scandic.com)

[linkedin.com/company/szaboscandic](https://www.linkedin.com/company/szaboscandic) 

## LYL1 MaxPab mouse polyclonal antibody (B01) MaxPab®

Catalog # : H00004066-B01

規格 : [ 50 uL ]

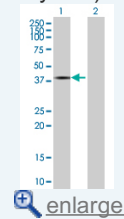
[List All](#)

### Specification

<b>Product Description:</b>	Mouse polyclonal antibody raised against a full-length human LYL1 protein.
<b>Immunogen:</b>	LYL1 (NP_005574.2, 1 a.a. ~ 280 a.a) full-length human protein.
<b>Sequence:</b>	MCPPQAQAEVGPMTMTEKAEMVCAPSPAPAPPPKASP GPPQVEEVGHR GGSSPRLPPGVPVISLGH SRPPGVAMPTTELGLR PPLLQLSTLGTAP PTLALHYHPHFLNSVYIGPAGPFSIFPSSRLKRRPSHCELDLAEGHQ PQ KVARRVFTNSRERWRQQNVNGAF AELRKL LPTHPDRKLSKNEVRLA MKYIGFLVRLRDQAAAL AAGPTPPGPRKRPVHRV PDDGARRGSGRRA EAAARSQPAPPADPDGSPGGAARPIKMEQTALSPEVR
<b>Host:</b>	Mouse
<b>Reactivity:</b>	Human
<b>Quality Control Testing:</b>	Antibody reactive against mammalian transfected lysate.
<b>Storage Buffer:</b>	No additive
<b>Storage Instruction:</b>	Store at -20°C or lower. Aliquot to avoid repeated freezing and thawing.
<b>Note:</b>	For IHC and IF applications, antibody purification with Protein A will be needed prior to use.
<b>MSDS:</b>	<a href="#">Download</a>
<b>Datasheet:</b>	<a href="#">Download</a>

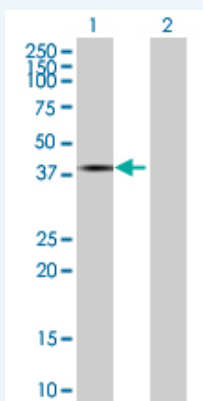
### Application Image

Western Blot (Transfected lysate)



### Applications

#### Western Blot (Transfected lysate)



Western Blot analysis of LYL1 expression in transfected 293T cell line ([H00004066-T01](#)) by LYL1 MaxPab polyclonal antibody.

Lane 1: LYL1 transfected lysate(30.8 KDa).  
Lane 2: Non-transfected lysate.

---

### Gene Information

---

**Entrez GeneID:** [4066](#)

---

**GeneBank  
Accession#:** [NM\\_005583.3](#)

---

**Protein  
Accession#:** [NP\\_005574.2](#)

---

**Gene Name:** LYL1

---

**Gene Alias:** bHLHa18

---

**Gene  
Description:** lymphoblastic leukemia derived sequence 1

---

**Omim ID:** [151440](#)

---

**Gene Ontology:** [Hyperlink](#)

---

**Other  
Designations:** -

---