



SZABO SCANDIC

Part of Europa Biosite

Produktinformation



Forschungsprodukte & Biochemikalien



Zellkultur & Verbrauchsmaterial



Diagnostik & molekulare Diagnostik



Laborgeräte & Service

Weitere Information auf den folgenden Seiten!
See the following pages for more information!



Lieferung & Zahlungsart

siehe unsere [Liefer- und Versandbedingungen](#)

Zuschläge

- Mindermengenzuschlag
- Trockeneiszuschlag
- Gefahrgutzuschlag
- Expressversand

SZABO-SCANDIC HandelsgmbH

Quellenstraße 110, A-1100 Wien

T. +43(0)1 489 3961-0

F. +43(0)1 489 3961-7

mail@szabo-scandic.com

www.szabo-scandic.com

[linkedin.com/company/szaboscandic](https://www.linkedin.com/company/szaboscandic) 

LYL1 purified MaxPab mouse polyclonal antibody (B01P) MaxPab®

Catalog # : H00004066-B01P

規格 : [50 ug]

[List All](#)

Specification

Product Description: Mouse polyclonal antibody raised against a full-length human LYL1 protein.

Immunogen: LYL1 (NP_005574.2, 1 a.a. ~ 280 a.a) full-length human protein.

Sequence:
 MCPPQAQAEVGPMTMTEKAEMVCAPSPAPAPPPKASPSPGPPQVEEVGHR
 GGSSPRLPPGVPVISLGHSPRPPGVAMPTTELGLRPPLLQLSTLGTAP
 PTLALHYHPHFLNSVYIGPAGPFSIFPSSRLKRRPSHCELDLAEGHQFQ
 KVARRVFTNSRERWRQQNVNGAFAELRKLPTHPDRKLSKNEVLR
 LAMKYIGFLVRLRDQAAALAGPTPPGPRKRPVHRVPDDGARRGSGRRA
 EAAARSQPAPPADPDGSPGGAARPIKMEQTALSPEVR

Host: Mouse

Reactivity: Human

Quality Control Testing: Antibody reactive against mammalian transfected lysate.

Storage Buffer: In 1x PBS, pH 7.4

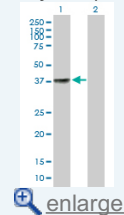
Storage Instruction: Store at -20°C or lower. Aliquot to avoid repeated freezing and thawing.

MSDS: [Download](#)

Datasheet: [Download](#)

Application Image

Western Blot (Transfected lysate)



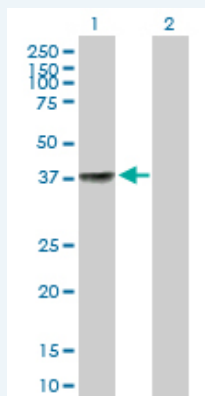
[enlarge](#)

Publication Reference

1. [Transcriptional Activation of Prostate Specific Homeobox Gene NKX3-1 in Subsets of T-Cell Lymphoblastic Leukemia \(T-ALL\)](#). Nagel S, Ehrentraut S, Tomasch J, Lienenklaus S, Schneider B, Geffers R, Meyer C, Kaufmann M, Drexler HG, Macleod RA. PLoS One. 2012;7(7):e40747. Epub 2012 Jul 27.

Applications

Western Blot (Transfected lysate)



Western Blot analysis of LYL1 expression in transfected 293T cell line ([H00004066-T01](#))

by LYL1 MaxPab polyclonal antibody.

Lane 1: LYL1 transfected lysate(30.8 KDa).

Lane 2: Non-transfected lysate.

 [Protocol Download](#)

Gene Information

Entrez GeneID: [4066](#)

**GeneBank
Accession#:** [NM_005583.3](#)

**Protein
Accession#:** [NP_005574.2](#)

Gene Name: LYL1

Gene Alias: bHLHa18

**Gene
Description:** lymphoblastic leukemia derived sequence 1

Omim ID: [151440](#)

Gene Ontology: [Hyperlink](#)

**Other
Designations:** -

[服務條款](#) | [隱私權政策](#) | [著作及商標](#) | [網站地圖](#)

©2016 亞諾法生技股份有限公司 Abnova Corporation. 版權所有.