



# SZABO SCANDIC

Part of Europa Biosite

## Produktinformation



Forschungsprodukte & Biochemikalien



Zellkultur & Verbrauchsmaterial



Diagnostik & molekulare Diagnostik



Laborgeräte & Service

Weitere Information auf den folgenden Seiten!  
See the following pages for more information!



### Lieferung & Zahlungsart

siehe unsere [Liefer- und Versandbedingungen](#)

### Zuschläge

- Mindermengenzuschlag
- Trockeneiszuschlag
- Gefahrgutzuschlag
- Expressversand

### SZABO-SCANDIC HandelsgmbH

Quellenstraße 110, A-1100 Wien

T. +43(0)1 489 3961-0

F. +43(0)1 489 3961-7

[mail@szabo-scandic.com](mailto:mail@szabo-scandic.com)

[www.szabo-scandic.com](http://www.szabo-scandic.com)

[linkedin.com/company/szaboscandic](https://www.linkedin.com/company/szaboscandic) 

# LYN purified MaxPab mouse polyclonal antibody (B01P) MaxPab®

Catalog # : H00004067-B01P

規格 : [ 50 ug ]

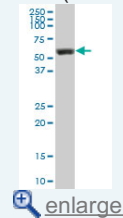
[List All](#)

## Specification

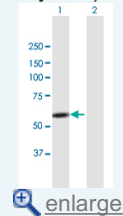
<b>Product Description:</b>	Mouse polyclonal antibody raised against a full-length human LYN protein.
<b>Immunogen:</b>	LYN (NP_002341.1, 1 a.a. ~ 512 a.a) full-length human protein.
<b>Sequence:</b>	MGCIKSKGKDSLSDDGVDLKTQPVRNTERTIYVRDPTSNKQQRVPESQ LLPGQRFQTKDPEEQGDIVVALYPYDGIHPDDL SFKKGEKMKVLEEHGE WWWKAKSLLT KKEGFIPSNYAKLNTLETEEWFFKDITRKDAERQLLAPGN SAGAF LIRES ETLKGSFSLSVRDFDPVHGDVIKHYKIRSLDNGGYISPRIT FPCISDMIKH YQKQADGLCRRLEKACISPKPQKPWDKDAWEIPRESIKLVK RLGAGQFGEVWMGYNNSTKVAVKTLKPGTMSVQAFLEEANLMKTLQH DKLVRLYAVVTREPIYIITEYMAKGSLLDFLKSDEGGKVLLPKLIDFSAQI AEGMAYIERKNYIHRDLRAANLVSESLMCKIADFGLARVIEDNEYTAREG AKFPIKWTAPEAINFGCFTIKSDVWSFGILLYEIVTYGKIPYPGR TNADVMT ALSQGYRMPRVENCDELVDIMKMCWKEKAEERPTFDYLSQSVLDDFFYT ATEGQYQQQP
<b>Host:</b>	Mouse
<b>Reactivity:</b>	Human
<b>Quality Control Testing:</b>	Antibody reactive against mammalian transfected lysate.
<b>Storage Buffer:</b>	In 1x PBS, pH 7.4
<b>Storage Instruction:</b>	Store at -20°C or lower. Aliquot to avoid repeated freezing and thawing.
<b>MSDS:</b>	<a href="#">Download</a>
<b>Datasheet:</b>	<a href="#">Download</a>

## Application Image

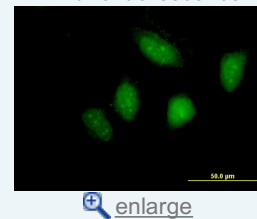
Western Blot (Tissue lysate)



Western Blot (Transfected lysate)

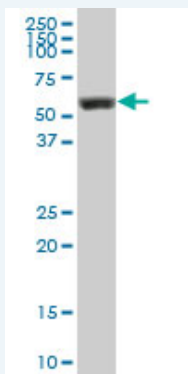


Immunofluorescence



## Applications

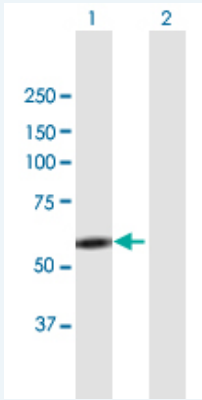
Western Blot (Tissue lysate)



LYN MaxPab polyclonal antibody. Western Blot analysis of LYN expression in human spleen.

[Protocol Download](#)

### Western Blot (Transfected lysate)



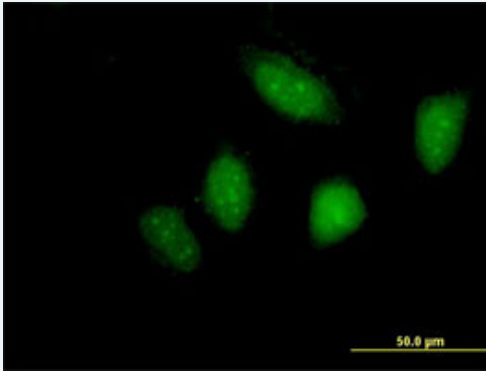
Western Blot analysis of LYN expression in transfected 293T cell line ([H00004067-T01](#)) by LYN MaxPab polyclonal antibody.


Lane 1: LYN transfected lysate(56.32 KDa).

Lane 2: Non-transfected lysate.

 [Protocol Download](#)

### Immunofluorescence



 [enlarge this image](#)

Immunofluorescence of [purified](#) MaxPab antibody to LYN on HeLa cell. [antibody concentration 10 ug/ml]

 [Protocol Download](#)

### Gene Information

Entrez GeneID: [4067](#)

GeneBank [NM\\_002350.1](#)

Accession#:

Protein [NP\\_002341.1](#)

Accession#:

Gene Name: LYN

Gene Alias: FLJ26625,JTK8

Gene Description: v-yes-1 Yamaguchi sarcoma viral related oncogene homolog

Omim ID: [165120](#)

Gene Ontology: [Hyperlink](#)

Other Designations: Yamaguchi sarcoma viral (v-yes-1) oncogene homolog, Yamaguchi sarcoma viral (v-yes-1) related oncogene homolog

### Gene Pathway

[B cell receptor signaling pathway](#) [Chemokine signaling pathway](#)

[Epithelial cell signaling in Helicobacter pylori infection](#) [Fc epsilon RI signaling pathway](#)  
[Fc gamma R-mediated phagocytosis](#) [Long-term depression](#)

#### **Related Disease**

---

[Diabetes Mellitus, Type 2](#) [Genetic Predisposition to Disease](#) [HIV Infections](#)  
[Lupus Erythematosus, Systemic](#) [Mental Disorders](#) [Tobacco Use Disorder](#)

---

[服務條款](#) | [隱私權政策](#) | [著作及商標](#) | [網站地圖](#)

©2016 亞諾法生技股份有限公司 Abnova Corporation. 版權所有.