



SZABO SCANDIC

Part of Europa Biosite

Produktinformation



Forschungsprodukte & Biochemikalien



Zellkultur & Verbrauchsmaterial



Diagnostik & molekulare Diagnostik



Laborgeräte & Service

Weitere Information auf den folgenden Seiten!
See the following pages for more information!



Lieferung & Zahlungsart

siehe unsere [Liefer- und Versandbedingungen](#)

Zuschläge

- Mindermengenzuschlag
- Trockeneiszuschlag
- Gefahrgutzuschlag
- Expressversand

SZABO-SCANDIC HandelsgmbH

Quellenstraße 110, A-1100 Wien

T. +43(0)1 489 3961-0

F. +43(0)1 489 3961-7

mail@szabo-scandic.com

www.szabo-scandic.com

[linkedin.com/company/szaboscandic](https://www.linkedin.com/company/szaboscandic) 

LYN purified MaxPab rabbit polyclonal antibody (D01P) MaxPab®

Catalog # : H00004067-D01P

規格 : [100 ug]

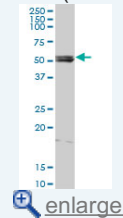
[List All](#)

Specification

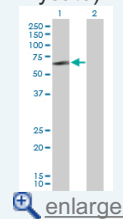
Product Description:	Rabbit polyclonal antibody raised against a full-length human LYN protein.
Immunogen:	LYN (NP_002341.1, 1 a.a. ~ 512 a.a) full-length human protein.
Sequence:	MGCISKSGKDSLSDDGVDLKTQPVRNTERTIYVRDPTSNKQQRVPVPE LLPGQRFQTKDPEEQGDIVVALYPYDGIHPDDL SFKKGEKMKVLEEHGE WWWKAKSLLTKKEGFIPSNYVAKLNTLEEEWFFKDITRKDAERQLLAPGN SAGAFLIRESLTKGSFSLSVRDFDPVHGDVIKHYKIRSLDNGGYISPRIT FPCISDMIKHYQKQADGLCRRLEKACISPKPQKPWQKDAWEIPRESIKLVK RLGAGQFGEVWMGYNNSTKVAVKTLKPGTMSVQAFLEEANLMKTLQH DKLVRLYAVVTREPIYIITEYMAKGSLLDFLKSDEGGKVLPLKIDFSAQI AEGMAYIERKNYIHRDLRAANLVSESLMCKIADFGLARVIEDNEYTAREG AKFPIKWTAPEAINFGCFTIKSDVWSFGILLYEIVTYGKIPYPGRTNADVMT ALSQGYRMPRVENCDELVDIMKMCWKEKAEERPTFDYLQSVLDDDFYT ATEGQYQQQP
Host:	Rabbit
Reactivity:	Human, Mouse
Quality Control Testing:	Antibody reactive against mammalian transfected lysate.
Storage Buffer:	In 1x PBS, pH 7.4
Storage Instruction:	Store at -20°C or lower. Aliquot to avoid repeated freezing and thawing.
MSDS:	Download
Datasheet:	Download

Application Image

Western Blot (Tissue lysate)

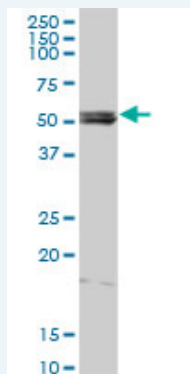


Western Blot (Transfected lysate)



Applications

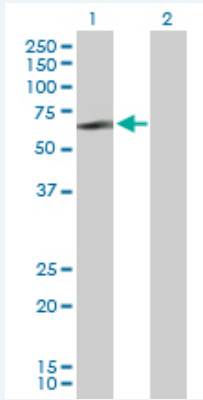
Western Blot (Tissue lysate)



LYN MaxPab rabbit polyclonal antibody. Western Blot analysis of LYN expression in mouse spleen.

[Protocol Download](#)

Western Blot (Transfected lysate)



Western Blot analysis of LYN expression in transfected 293T cell line ([H00004067-T02](#)) by LYN MaxPab polyclonal antibody.

Lane 1: LYN transfected lysate(58.60 KDa).

Lane 2: Non-transfected lysate.

 [Protocol Download](#)

Gene Information

Entrez GeneID: [4067](#)

GeneBank [NM_002350.1](#)
Accession#:

Protein [NP_002341.1](#)
Accession#:

Gene Name: LYN

Gene Alias: FLJ26625,JTK8

Gene Description: v-yes-1 Yamaguchi sarcoma viral related oncogene homolog

Omim ID: [165120](#)

Gene Ontology: [Hyperlink](#)

Other Designations: Yamaguchi sarcoma viral (v-yes-1) oncogene homolog, Yamaguchi sarcoma viral (v-yes-1) related oncogene homolog

Gene Pathway

[B cell receptor signaling pathway](#) [Chemokine signaling pathway](#)
[Epithelial cell signaling in Helicobacter pylori infection](#) [Fc epsilon RI signaling pathway](#)
[Fc gamma R-mediated phagocytosis](#) [Long-term depression](#)

Related Disease

[Diabetes Mellitus, Type 2](#) [Genetic Predisposition to Disease](#) [HIV Infections](#)
[Lupus Erythematosus, Systemic](#) [Mental Disorders](#) [Tobacco Use Disorder](#)