



SZABO SCANDIC

Part of Europa Biosite

Produktinformation



Forschungsprodukte & Biochemikalien



Zellkultur & Verbrauchsmaterial



Diagnostik & molekulare Diagnostik



Laborgeräte & Service

Weitere Information auf den folgenden Seiten!
See the following pages for more information!



Lieferung & Zahlungsart

siehe unsere [Liefer- und Versandbedingungen](#)

Zuschläge

- Mindermengenzuschlag
- Trockeneiszuschlag
- Gefahrgutzuschlag
- Expressversand

SZABO-SCANDIC HandelsgmbH

Quellenstraße 110, A-1100 Wien

T. +43(0)1 489 3961-0

F. +43(0)1 489 3961-7

mail@szabo-scandic.com

www.szabo-scandic.com

[linkedin.com/company/szaboscandic](https://www.linkedin.com/company/szaboscandic) 



SH2D1A purified MaxPab mouse polyclonal antibody (B01P) MaxPab®

Catalog # : H00004068-B01P

規格 : [50 ug]

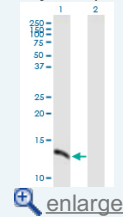
List All

Specification

Product Description:	Mouse polyclonal antibody raised against a full-length human SH2D1A protein.
Immunogen:	SH2D1A (NP_002342.1, 1 a.a. ~ 128 a.a) full-length human protein.
Sequence:	MDAVAVYHGKISRETGEKLLLATGLDGSYLLRDSSESVPGVYCLCVLYHG YIYTYRVSQTETGSWSAETAPGVHKRYFRKIKNLISAFQKPDQGVIPLQY PVEKKSSARSTQGTGIREDPDVCLKAP
Host:	Mouse
Reactivity:	Human
Quality Control Testing:	Antibody reactive against mammalian transfected lysate.
Storage Buffer:	In 1x PBS, pH 7.4
Storage Instruction:	Store at -20°C or lower. Aliquot to avoid repeated freezing and thawing.
MSDS:	 Download
Datasheet:	 Download

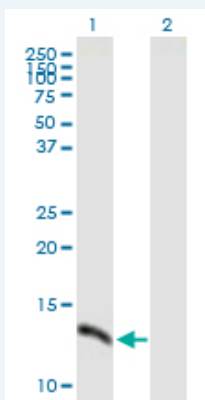
Application Image

Western Blot (Transfected lysate)



Applications

Western Blot (Transfected lysate)



Western Blot analysis of SH2D1A expression in transfected 293T cell line ([H00004068-T02](#)) by SH2D1A MaxPab polyclonal antibody.

Lane 1: SH2D1A transfected lysate(14.08 KDa).
Lane 2: Non-transfected lysate.

 [Protocol Download](#)

Gene Information

Entrez GeneID: [4068](#)

GeneBank [NM_002351](#)

Accession#:

Protein [NP_002342.1](#)

Accession#:

Gene Name: SH2D1A

Gene Alias: DSHP,EBVS,FLJ18687,FLJ92177,IMD5,LYP,MTCP1,SAP,XLP,XLPD

Gene SH2 domain protein 1A

Description:

Omim ID: [300490](#), [308240](#)

Gene Ontology: [Hyperlink](#)

Gene Summary: This gene encodes a protein that plays a major role in the bidirectional stimulation of T and B cells. This protein contains an SH2 domain and a short tail. It associates with the signaling lymphocyte-activation molecule, thereby acting as an inhibitor of this transmembrane protein by blocking the recruitment of the SH2-domain-containing signal-transduction molecule SHP-2 to its docking site. This protein can also bind to other related surface molecules that are expressed on activated T, B and NK cells, thereby modifying signal transduction pathways in these cells. Mutations in this gene cause lymphoproliferative syndrome X-linked type 1 or Duncan disease, a rare immunodeficiency characterized by extreme susceptibility to infection with Epstein-Barr virus, with symptoms including severe mononucleosis and malignant lymphoma. Multiple transcript variants encoding different isoforms have been found for this gene. [provided by RefSeq]

Other Designations: Duncan's disease,OTTHUMP00000023976,SLAM-associated protein,T cell signal transduction molecule SAP,signaling lymphocyte activation molecule-associated protein

Gene Pathway

[Natural killer cell mediated cytotoxicity](#)

Related Disease

[Common Variable Immunodeficiency](#) [Epstein-Barr Virus Infections](#)
[Genetic Predisposition to Disease](#) [Immunologic Deficiency Syndromes](#)
[Infectious Mononucleosis](#) [Lymphoma](#) [Lymphoproliferative Disorders](#)
[Severe Combined Immunodeficiency](#)

[服務條款](#) | [隱私權政策](#) | [著作及商標](#) | [網站地圖](#)

©2016 亞諾法生技股份有限公司 Abnova Corporation. 版權所有.