



SZABO SCANDIC

Part of Europa Biosite

Produktinformation



Forschungsprodukte & Biochemikalien



Zellkultur & Verbrauchsmaterial



Diagnostik & molekulare Diagnostik



Laborgeräte & Service

Weitere Information auf den folgenden Seiten!
See the following pages for more information!



Lieferung & Zahlungsart

siehe unsere [Liefer- und Versandbedingungen](#)

Zuschläge

- Mindermengenzuschlag
- Trockeneiszuschlag
- Gefahrgutzuschlag
- Expressversand

SZABO-SCANDIC HandelsgmbH

Quellenstraße 110, A-1100 Wien

T. +43(0)1 489 3961-0

F. +43(0)1 489 3961-7

mail@szabo-scandic.com

www.szabo-scandic.com

[linkedin.com/company/szaboscandic](https://www.linkedin.com/company/szaboscandic) 

EPCAM purified MaxPab mouse polyclonal antibody (B02P) MaxPab®

Catalog # : H00004072-B02P

規格 : [50 ug]

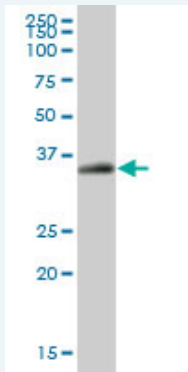
[List All](#)

Specification

Product Description:	Mouse polyclonal antibody raised against a full-length human EPCAM protein.
Immunogen:	EPCAM (NP_002345.1, 1 a.a. ~ 314 a.a) full-length human protein.
Sequence:	MAPPQVLAFLGLLLAAATATFAAAQEECVGENYKLAVNCFVNNNRQCQC TSVGAQNTVICSKLAACKCLVMKAEMNGSKLGRRAKPEGALQNDGLYDP DCDESGLFKAKQCNGTSTCWCVNTAGVRRTDKDEITCSERVRTYWIIE LKHKAREKPYDSKSLRTALQKEITTRYQLDPKFITSLYENNVITDLVQNSS QKTQNDVDIADVAYYFEKDVKGESLFHSHKMDLTVNGEQLDLDPGQTLI YYVDEKAPEFSMQGLKAGVIAVIVVVVAVVAGIVLVISRKKRMAKYEKAEI KEMGEMHRELNA
Host:	Mouse
Reactivity:	Human
Quality Control Testing:	Antibody reactive against mammalian transfected lysate.
Storage Buffer:	In 1x PBS, pH 7.4
Storage Instruction:	Store at -20°C or lower. Aliquot to avoid repeated freezing and thawing.
MSDS:	Download
Datasheet:	Download

Applications

Western Blot (Tissue lysate)



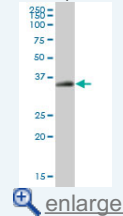
EPCAM MaxPab polyclonal antibody. Western Blot analysis of EPCAM expression in human colon.

[Protocol Download](#)

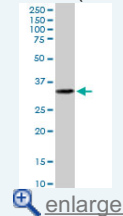
Western Blot (Cell lysate)

Application Image

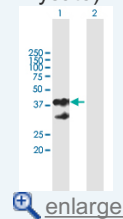
Western Blot (Tissue lysate)



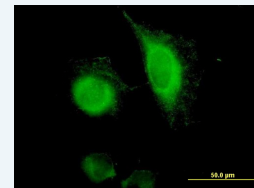
Western Blot (Cell lysate)



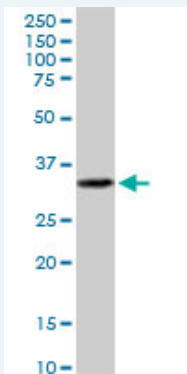
Western Blot (Transfected lysate)



Immunofluorescence



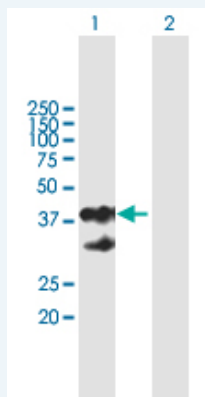
[enlarge](#)



EPCAM MaxPab polyclonal antibody. Western Blot analysis of EPCAM expression in A-431.

[Protocol Download](#)

Western Blot (Transfected lysate)



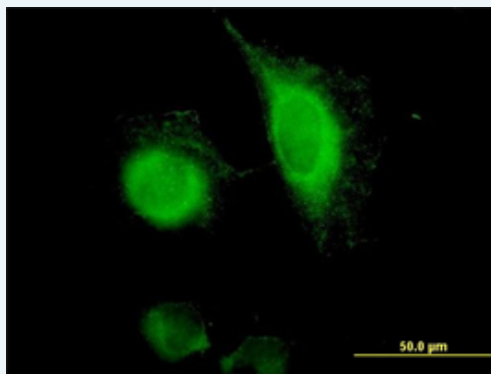
Western Blot analysis of EPCAM expression in transfected 293T cell line ([H00004072-T02](#)) by EPCAM MaxPab polyclonal antibody.

Lane 1: EPCAM transfected lysate(34.54 KDa).

Lane 2: Non-transfected lysate.

[Protocol Download](#)

Immunofluorescence



[enlarge this image](#)

Immunofluorescence of purified MaxPab antibody to EPCAM on HeLa cell. [antibody concentration 10 ug/ml]

[Protocol Download](#)

Gene Information

Entrez GeneID: [4072](#)

GeneBank [NM_002354.1](#)

Accession#:

Protein [NP_002345.1](#)

Accession#:

Gene Name: EPCAM

Gene Alias: 17-1A,323/A3,CD326,CO-17A,CO17-1A,EGP,EGP-2,EGP34,EGP40,ESA,Ep-CAM,GA733-2,HEA125,KS1/4,KSA,M4S1,MH99,MIC18,MK-1,MOC31,TACST-1,TACSTD1,TROP1,hEGP-2

Gene Description: epithelial cell adhesion molecule

Omim ID: [185535](#)

Gene Ontology: [Hyperlink](#)

Gene Summary: This gene encodes a carcinoma-associated antigen and is a member of a family that includes at least two type I membrane proteins. This antigen is expressed on most normal epithelial cells and gastrointestinal carcinomas and functions as a homotypic calcium-independent cell adhesion molecule. The antigen is being used as a target for immunotherapy treatment of human carcinomas. Mutations in this gene result in congenital tufting enteropathy. [provided by RefSeq]

Other Designations: adenocarcinoma-associated antigen,carcinoma-associated antigen GA733-2,human epithelial glycoprotein-2,membrane component, chromosome 4, surface marker (35kD glycoprotein),tumor-associated calcium signal transducer 1

Related Disease

[Genetic Predisposition to Disease](#) [Ovarian Neoplasms](#)