



SZABO SCANDIC

Part of Europa Biosite

Produktinformation



Forschungsprodukte & Biochemikalien



Zellkultur & Verbrauchsmaterial



Diagnostik & molekulare Diagnostik



Laborgeräte & Service

Weitere Information auf den folgenden Seiten!
See the following pages for more information!



Lieferung & Zahlungsart

siehe unsere [Liefer- und Versandbedingungen](#)

Zuschläge

- Mindermengenzuschlag
- Trockeneiszuschlag
- Gefahrgutzuschlag
- Expressversand

SZABO-SCANDIC HandelsgmbH

Quellenstraße 110, A-1100 Wien

T. +43(0)1 489 3961-0

F. +43(0)1 489 3961-7

mail@szabo-scandic.com

www.szabo-scandic.com

[linkedin.com/company/szaboscandic](https://www.linkedin.com/company/szaboscandic) 

EPCAM (Human) Recombinant Protein HuPro®

Catalog # : H00004072-H02

規格 : [25 ug]

[List All](#)

Specification

Product Description: Purified EPCAM (NP_002345.1 24 a.a. - 265 a.a.) human recombinant protein with His-Flag-StreptII tag at N-terminus expressed in human cells.

Transfected Cell Line: Human HEK293H cells

Sequence:
 QEECVCENYKLAVNCFVNNRQCQCTSVGAQNTVICKSLAAKCLVMKAE
 MNGSKLGRRAKPEGALQNDGLYDPDCDESGLFKAKQCNGTSTCWCV
 NTAGVRRTDKDEITCSERVRTYWIIEELKHKAREKPYDSKSLRTALQKEIT
 TRYQLDPKFIT SILYENNVITIDLQNSSQKTQNDVDIADVAYYFEKDVKGE
 SLFHSKKMDLTVNGEQLDLDPGQTLIYYVDEKAPEFSMQGLK

Host: Human

Theoretical MW (kDa): 31.9

Form: Liquid

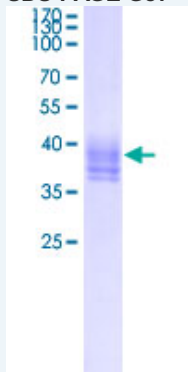
Preparation Method: Transfection of pSuper-EPCAM plasmid into HEK293H cell, and the expressed protein was purified by *Strep*-Tactin affinity column.

Purification: *Strep*-Tactin affinity columns

Concentration: ≥ 10 ug/ml

Activity: Not Tested

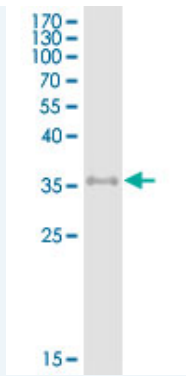
Quality Control Testing: SDS-PAGE and Western Blot



Western Blot

Application Image

Western Blot
 Enzyme-linked Immunoabsorbent Assay
 SDS-PAGE
 Protein Interaction



Storage Buffer: 100 mM Tris-HCl pH 8.0, 150 mM NaCl, 1 mM EDTA, and 5 mM desthiobiotin.

Storage Instruction: Store at -80°C. Aliquot to avoid repeated freezing and thawing.

Datasheet:  [Download](#)

Applications

Western Blot

Enzyme-linked Immunoabsorbent Assay

SDS-PAGE

Protein Interaction

Gene Information

Entrez GeneID: [4072](#)

GeneBank Accession#: [NM_002354.1](#)

Protein Accession#: [NP_002345.1](#)

Gene Name: EPCAM

Gene Alias: 17-1A,323/A3,CD326,CO-17A,CO17-1A,EGP,EGP-2,EGP34,EGP40,ESA,Ep-CAM,GA733-2,HEA125,KS1/4,KSA,M4S1,MH99,MIC18,MK-1,MOC31,TACST-1,TACSTD1,TROP1,hEGP-2

Gene Description: epithelial cell adhesion molecule

Omim ID: [185535](#)

Gene Ontology: [Hyperlink](#)

Gene Summary: This gene encodes a carcinoma-associated antigen and is a member of a family that includes at least two type I membrane proteins. This antigen is expressed on most normal epithelial cells and gastrointestinal carcinomas and functions as a homotypic calcium-independent cell adhesion molecule. The antigen is being used as a target for immunotherapy treatment of human carcinomas. Mutations in this gene result in congenital tufting enteropathy. [provided by RefSeq]

Other Designations: adenocarcinoma-associated antigen,carcinoma-associated antigen GA733-2,human epithelial glycoprotein-2,membrane component, chromosome 4, surface marker (35kD glycoprotein),tumor-associated

Related Disease

Genetic Predisposition to Disease Ovarian Neoplasms

[服務條款](#) | [隱私權政策](#) | [著作及商標](#) | [網站地圖](#)

©2016 亞諾法生技股份有限公司 Abnova Corporation. 版權所有.