



SZABO SCANDIC

Part of Europa Biosite

Produktinformation



Forschungsprodukte & Biochemikalien



Zellkultur & Verbrauchsmaterial



Diagnostik & molekulare Diagnostik



Laborgeräte & Service

Weitere Information auf den folgenden Seiten!
See the following pages for more information!



Lieferung & Zahlungsart

siehe unsere [Liefer- und Versandbedingungen](#)

Zuschläge

- Mindermengenzuschlag
- Trockeneiszuschlag
- Gefahrgutzuschlag
- Expressversand

SZABO-SCANDIC HandelsgmbH

Quellenstraße 110, A-1100 Wien

T. +43(0)1 489 3961-0

F. +43(0)1 489 3961-7

mail@szabo-scandic.com

www.szabo-scandic.com

[linkedin.com/company/szaboscandic](https://www.linkedin.com/company/szaboscandic) 

EPCAM monoclonal antibody (M14), clone 2F10

Catalog # : H00004072-M14

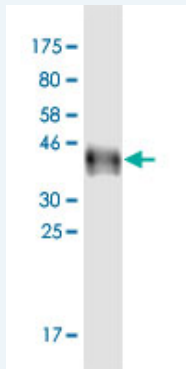
規格 : [100 ug]

[List All](#)

Specification

Product Description:	Mouse monoclonal antibody raised against a partial recombinant EPCAM.
Immunogen:	EPCAM (NP_002345.1, 24 a.a. ~ 265 a.a) partial recombinant protein with GST tag.
Sequence:	QEECVCENYKLAVNCFVNNNRQCQCTSVGAQNTVICSKLAAKCLVMKAE MNGSKLGRRAKPEGALQNNNDGLYDPDCDESLFKAKQCNGTSTCWCV NTAGVRRTDKDEITCSERVRTYWIIILKHKAREKPYDSKSLRTALQKEIT TRYQLDPKFITSILYENNVITIDLQNSSQKTQNDVDIADVAYYFEKDVKGE SLFHSKKMDLTVNGEQLDLDPGQTLIIYVDEKAPEFSMQGLK
Host:	Mouse
Reactivity:	Human
Isotype:	IgG1 Kappa

Quality Control Testing: Antibody Reactive Against Recombinant Protein.



Western Blot detection against Immunogen (29.7 KDa) .

Storage Buffer: In 1x PBS, pH 7.4

Storage Instruction: Store at -20°C or lower. Aliquot to avoid repeated freezing and thawing.

Datasheet: [Download](#)

Applications

Western Blot (Recombinant protein)

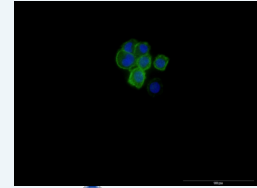
[Protocol Download](#)

Immunofluorescence

Application Image

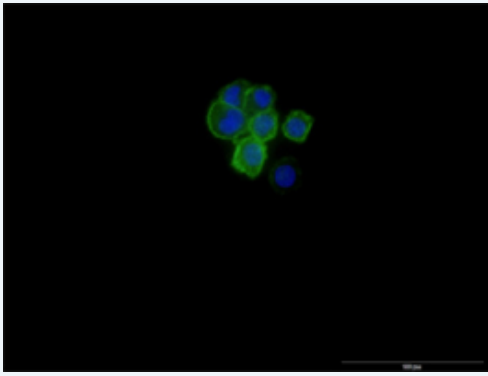
Western Blot (Recombinant protein)

Immunofluorescence



[enlarge](#)

ELISA



[enlarge this image](#)

Immunofluorescence of monoclonal antibody to EPCAM on SK-BR-3 cell . [antibody concentration 10 ug/ml]

[Protocol Download](#)

ELISA

Gene Information

Entrez GeneID: [4072](#)

**GeneBank
Accession#:** [NM_002354.1](#)

**Protein
Accession#:** [NP_002345.1](#)

Gene Name: EPCAM

Gene Alias: 17-1A,323/A3,CD326,CO-17A,CO17-1A,EGP,EGP-2,EGP34,EGP40,ESA,Ep-CAM,GA733-2,HEA125,KS1/4,KSA,M4S1,MH99,MIC18,MK-1,MOC31,TACST-1,TACSTD1,TROP1,hEGP-2

**Gene
Description:** epithelial cell adhesion molecule

Omim ID: [185535](#)

Gene Ontology: [Hyperlink](#)

Gene Summary: This gene encodes a carcinoma-associated antigen and is a member of a family that includes at least two type I membrane proteins. This antigen is expressed on most normal epithelial cells and gastrointestinal carcinomas and functions as a homotypic calcium-independent cell adhesion molecule. The antigen is being used as a target for immunotherapy treatment of human carcinomas. Mutations in this gene result in congenital tufting enteropathy. [provided by RefSeq]

**Other
Designations:** adenocarcinoma-associated antigen,carcinoma-associated antigen GA733-2,human epithelial glycoprotein-2,membrane component, chromosome 4, surface marker (35kD glycoprotein),tumor-associated calcium signal transducer 1

Related Disease

[Genetic Predisposition to Disease Ovarian Neoplasms](#)