



SZABO SCANDIC

Part of Europa Biosite

Produktinformation



Forschungsprodukte & Biochemikalien



Zellkultur & Verbrauchsmaterial



Diagnostik & molekulare Diagnostik



Laborgeräte & Service

Weitere Information auf den folgenden Seiten!
See the following pages for more information!



Lieferung & Zahlungsart

siehe unsere [Liefer- und Versandbedingungen](#)

Zuschläge

- Mindermengenzuschlag
- Trockeneiszuschlag
- Gefahrgutzuschlag
- Expressversand

SZABO-SCANDIC HandelsgmbH

Quellenstraße 110, A-1100 Wien

T. +43(0)1 489 3961-0

F. +43(0)1 489 3961-7

mail@szabo-scandic.com

www.szabo-scandic.com

[linkedin.com/company/szaboscandic](https://www.linkedin.com/company/szaboscandic) 

EPCAM (Human) IP-WB Antibody Pair

Catalog # : H00004072-PW2

規格 : [1 Set]

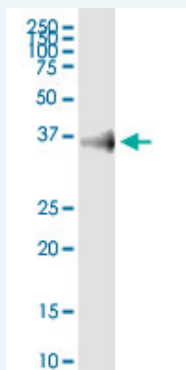
List All

Specification

Product Description: This IP-WB antibody pair set comes with one antibody for immunoprecipitation and another to detect the precipitated protein in western blot.

Reactivity: Human

Quality Control Testing: Immunoprecipitation-Western Blot (IP-WB)



Immunoprecipitation of EPCAM transfected lysate using rabbit polyclonal anti-EPCAM and Protein A Magnetic Bead (U0007), and immunoblotted with mouse purified polyclonal anti-EPCAM.

Supplied Product: Antibody pair set content:
1. Antibody pair for IP: rabbit polyclonal anti-EPCAM (300 ul)
2. Antibody pair for WB: mouse purified polyclonal anti-EPCAM (50 ug)

Storage Instruction: Store reagents of the antibody pair set at -20°C or lower. Please aliquot to avoid repeated freeze thaw cycle. Reagents should be returned to -20°C storage immediately after use.

Applications

Immunoprecipitation-Western Blot

 [Protocol Download](#)

Gene Information

Entrez GeneID: [4072](#)

Gene Name: EPCAM

Gene Alias: 17-1A,323/A3,CD326,CO-17A,CO17-1A,EGP,EGP-2,EGP34,EGP40,ESA,Ep-CAM,GA733-2,HEA125,KS1/4,KSA,M4S1,MH99,MIC18,MK-1,MOC31,TACST-1,TACSTD1,TROP1,hEGP-2

Gene Description: epithelial cell adhesion molecule

Omim ID: [185535](#)

Gene Ontology: [Hyperlink](#)

Gene Summary: This gene encodes a carcinoma-associated antigen and is a member of a family that includes at least two type I membrane proteins. This antigen is expressed on most normal epithelial cells and gastrointestinal carcinomas and functions as a homotypic calcium-independent cell adhesion molecule. The antigen is being used as a target for immunotherapy treatment of human carcinomas. Mutations in this gene result in congenital tufting enteropathy. [provided by RefSeq]

Other Designations: adenocarcinoma-associated antigen, carcinoma-associated antigen GA733-2, human epithelial glycoprotein-2, membrane component, chromosome 4, surface marker (35kD glycoprotein), tumor-associated calcium signal transducer 1

Related Disease

[Genetic Predisposition to Disease](#) [Ovarian Neoplasms](#)

[服務條款](#) | [隱私權政策](#) | [著作及商標](#) | [網站地圖](#)

©2016 亞諾法生技股份有限公司 Abnova Corporation. 版權所有.