



# SZABO SCANDIC

Part of Europa Biosite

## Produktinformation



Forschungsprodukte & Biochemikalien



Zellkultur & Verbrauchsmaterial



Diagnostik & molekulare Diagnostik



Laborgeräte & Service

Weitere Information auf den folgenden Seiten!  
See the following pages for more information!



### Lieferung & Zahlungsart

siehe unsere [Liefer- und Versandbedingungen](#)

### Zuschläge

- Mindermengenzuschlag
- Trockeneiszuschlag
- Gefahrgutzuschlag
- Expressversand

### SZABO-SCANDIC HandelsgmbH

Quellenstraße 110, A-1100 Wien

T. +43(0)1 489 3961-0

F. +43(0)1 489 3961-7

[mail@szabo-scandic.com](mailto:mail@szabo-scandic.com)

[www.szabo-scandic.com](http://www.szabo-scandic.com)

[linkedin.com/company/szaboscandic](https://www.linkedin.com/company/szaboscandic) 

## EPCAM 293T Cell Transient Overexpression Lysate(Denatured)

Catalog # : H00004072-T01

規格 : [ 100 uL ]

List All

### Specification

**Transfected Cell Line:** 293T

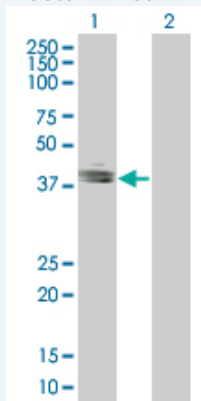
**Plasmid:** pCMV-TACSTD1 full-length

**Host:** Human

**Theoretical MW (kDa):** 34.65

**Quality Control Testing:** Transient overexpression cell lysate was tested with Anti-EPCAM antibody ([H00004072-B01](#)) by Western Blots.

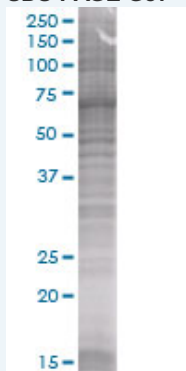
#### Western Blot



Lane 1: EPCAM transfected lysate ( 34.54 KDa)

Lane 2: Non-transfected lysate.

#### SDS-PAGE Gel



EPCAM transfected lysate.

**Storage Buffer:** 1X Sample Buffer (50 mM Tris-HCl, 2% SDS, 10% glycerol, 300 mM 2-mercaptoethanol, 0.01% Bromophenol blue)

**Storage Instruction:** Store at -80°C. Aliquot to avoid repeated freezing and thawing.

**MSDS:**  [Download](#)

### Applications

### Application Image

Western Blot

## Western Blot

### Gene Information

Entrez GeneID: [4072](#)

GeneBank Accession#: [BC014785](#)

Protein Accession#: [AAH14785](#)

Gene Name: EPCAM

Gene Alias: 17-1A,323/A3,CD326,CO-17A,CO17-1A,EGP,EGP-2,EGP34,EGP40,ESA,Ep-CAM,GA733-2,HEA125,KS1/4,KSA,M4S1,MH99,MIC18,MK-1,MOC31,TACST-1,TACSTD1,TROP1,hEGP-2

Gene Description: epithelial cell adhesion molecule

Omim ID: [185535](#)

Gene Ontology: [Hyperlink](#)

**Gene Summary:** This gene encodes a carcinoma-associated antigen and is a member of a family that includes at least two type I membrane proteins. This antigen is expressed on most normal epithelial cells and gastrointestinal carcinomas and functions as a homotypic calcium-independent cell adhesion molecule. The antigen is being used as a target for immunotherapy treatment of human carcinomas. Mutations in this gene result in congenital tufting enteropathy. [provided by RefSeq]

**Other Designations:** adenocarcinoma-associated antigen,carcinoma-associated antigen GA733-2,human epithelial glycoprotein-2,membrane component, chromosome 4, surface marker (35kD glycoprotein),tumor-associated calcium signal transducer 1

### Related Disease

[Genetic Predisposition to Disease Ovarian Neoplasms](#)

[服務條款](#) | [隱私權政策](#) | [著作及商標](#) | [網站地圖](#)

©2016 亞諾法生技股份有限公司 Abnova Corporation. 版權所有.