



SZABO SCANDIC

Part of Europa Biosite

Produktinformation



Forschungsprodukte & Biochemikalien



Zellkultur & Verbrauchsmaterial



Diagnostik & molekulare Diagnostik



Laborgeräte & Service

Weitere Information auf den folgenden Seiten!
See the following pages for more information!



Lieferung & Zahlungsart

siehe unsere [Liefer- und Versandbedingungen](#)

Zuschläge

- Mindermengenzuschlag
- Trockeneiszuschlag
- Gefahrgutzuschlag
- Expressversand

SZABO-SCANDIC HandelsgmbH

Quellenstraße 110, A-1100 Wien

T. +43(0)1 489 3961-0

F. +43(0)1 489 3961-7

mail@szabo-scandic.com

www.szabo-scandic.com

[linkedin.com/company/szaboscandic](https://www.linkedin.com/company/szaboscandic) 

NBR1 MaxPab rabbit polyclonal antibody (D01) MaxPab®

Catalog # : H00004077-D01

規格 : [100 uL]

[List All](#)

Specification

Product Description: Rabbit polyclonal antibody raised against a full-length human NBR1 protein.

Immunogen: NBR1 (NP_005890.2, 1 a.a. ~ 966 a.a) full-length human protein.

Sequence:
 MEPQVTLNMTFKNEIQSFLVSDPENTTWADIEAMVKVSFDLNTIQIKYLDE
 ENEEVSINSQGEYEEALKMAVKQGNQLQMQRVHEGHVHVVDEAPPPVGA
 KRLAARAGKKPLAHYSSLVRVLGSDMKTPEPAVQSFPLVPCDDTQFPQ
 DKPPDWFTSYLETFREQVNETVEKLEQKLHEKLVLQNP SLGSCPSEVS
 MPTSEETLFLPENQFSWHIACNNCQRRIVGVRYQCSLCP SYNICEDCEA
 GPYGHDTNHVLLKLRPVVGSSEPFCHSKYSTPRLPAALEQVRLQKQVD
 KNFLKAEKQRLRAEKKQRKAEVKELKKQLKLRKIHLWNSIHGLQSPKSP
 LGRPESELLQSNTLMLPLQPCTSVMPMLSAFVDENLPDGTHLQPGTKFI
 KHWRMKNTGNVKSADTKLKF MWGNLTLASTEKKDVLVPC LKAGHVG
 VVSVEFIAPALEGTYTSHWRLSHKGQQFGPRVWCSIVDPFPSEESPDNI
 EKGMISSKTDDLTCQQEETFLLAKEERQLGEVTEQTEGTAACIPQKAK
 NVASERELYIPVDLLTAQDLLSFELLDINVQELERVP HNT PVDVTPCMS
 PLPHDSPLIEKPGLGQIEEENEGAGFKALPDSMVSVKRAENIASVEEAE
 DLSGTQFVCETVIRSLTLDAAPDHNPPCRQKSLQMTFALPEGPLGNEKE
 EIIHIAEEEEAVMEEEDEEEDDEEDELKDEVQSQSSASSSEDIYIILPECFDTS
 RPLGDSMYSSALSQPLERGAEGKPGVEAGQEPAEAGERLPGGENQP
 QEHSISDILTTSQTLETVPLIPEVVELPPSLPRSSPCVHHHGSPGVDLPVTI
 PEVSSVPDQIRGEPGRSSGLVNSRQKSYDHSRHHHGSSIAGGLVKGALS
 VAASAYKALFAGPPVTAQPIISEDQTAALMAHLFEMGFCDRQLNLRLLKK
 HNYNILQVWTELLQLNNDWYSQRY

Host: Rabbit

Reactivity: Human

Quality Control Testing: Antibody reactive against mammalian transfected lysate.

Storage Buffer: No additive

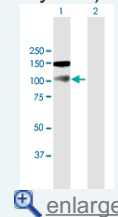
Storage Instruction: Store at -20°C or lower. Aliquot to avoid repeated freezing and thawing.

MSDS: [Download](#)

Datasheet: [Download](#)

Application Image

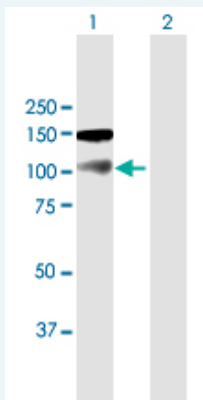
Western Blot (Transfected lysate)



[enlarge](#)

Applications

Western Blot (Transfected lysate)



Western Blot analysis of NBR1 expression in transduced 293T cell line ([H00004077-T01](#)) by NBR1 MaxPab polyclonal antibody.

Lane 1: NBR1 transduced lysate(107.40 KDa).

Lane 2: Non-transduced lysate.

 [Protocol Download](#)

Gene Information

Entrez GeneID: [4077](#)

GeneBank [NM_005899.3](#)

Accession#:

Protein [NP_005890.2](#)

Accession#:

Gene Name: NBR1

Gene Alias: 1A1-3B,KIAA0049,M17S2,MIG19

Gene neighbor of BRCA1 gene 1

Description:

Omim ID: [166945](#)

Gene Ontology: [Hyperlink](#)

Gene Summary: The protein encoded by this gene was originally identified as an ovarian tumor antigen monitored in ovarian cancer. The encoded protein contains a B-box/coiled coil motif, which is present in many genes with transformation potential, but the function of this protein is unknown. This gene is located on a region of chromosome 17q21.1 that is in close proximity to tumor suppressor gene BRCA1. Three alternatively spliced variants encoding the same protein have been identified for this gene. [provided by RefSeq]

Other membrane component, chromosome 17, surface marker 2 (ovarian

Designations: carcinoma antigen CA125),migration-inducing protein 19

Related Disease

[Tobacco Use Disorder](#)