



# SZABO SCANDIC

Part of Europa Biosite

## Produktinformation



Forschungsprodukte & Biochemikalien



Zellkultur & Verbrauchsmaterial



Diagnostik & molekulare Diagnostik



Laborgeräte & Service

Weitere Information auf den folgenden Seiten!  
See the following pages for more information!



### Lieferung & Zahlungsart

siehe unsere [Liefer- und Versandbedingungen](#)

### Zuschläge

- Mindermengenzuschlag
- Trockeneiszuschlag
- Gefahrgutzuschlag
- Expressversand

### SZABO-SCANDIC HandelsgmbH

Quellenstraße 110, A-1100 Wien

T. +43(0)1 489 3961-0

F. +43(0)1 489 3961-7

[mail@szabo-scandic.com](mailto:mail@szabo-scandic.com)

[www.szabo-scandic.com](http://www.szabo-scandic.com)

[linkedin.com/company/szaboscandic](https://www.linkedin.com/company/szaboscandic) 

## NBR1 monoclonal antibody (M05), clone 5C3

Catalog # : H00004077-M05

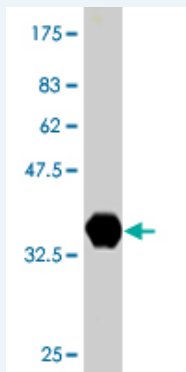
規格 : [ 100 ug ]

List All

### Specification

<b>Product Description:</b>	Mouse monoclonal antibody raised against a partial recombinant NBR1.
<b>Immunogen:</b>	NBR1 (NP_005890, 2 a.a. ~ 96 a.a) partial recombinant protein with GST tag. MW of the GST tag alone is 26 KDa.
<b>Sequence:</b>	EPQVTLNVTFKNEIQSFLVSDPENTTWADIEAMVKVSFDLNTIQIKYLDEE NEEVSINSQGEYEEALKMAVKQGNLQMQVHEGHHVDEAPPPV
<b>Host:</b>	Mouse
<b>Reactivity:</b>	Human
<b>Isotype:</b>	IgG2a Kappa

**Quality Control Testing:** Antibody Reactive Against Recombinant Protein.



Western Blot detection against Immunogen (36.19 KDa) .

**Storage Buffer:** In 1x PBS, pH 7.4

**Storage Instruction:** Store at -20°C or lower. Aliquot to avoid repeated freezing and thawing.

**MSDS:** [Download](#)

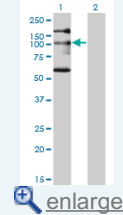
**Datasheet:** [Download](#)

### Applications

Western Blot (Transfected lysate)

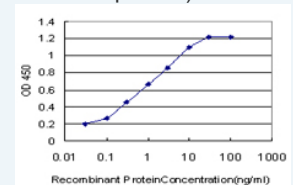
### Application Image

Western Blot (Transfected lysate)



Western Blot (Recombinant protein)

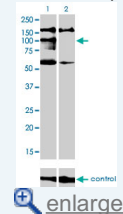
Sandwich ELISA (Recombinant protein)



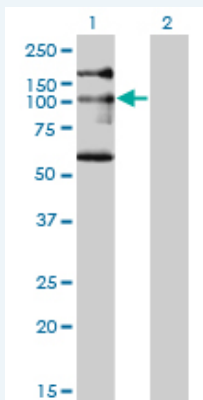
[enlarge](#)

ELISA

RNAi Knockdown (Antibody validated)



[enlarge](#)



Western Blot analysis of NBR1 expression in transfected 293T cell line by NBR1 monoclonal antibody (M05), clone 5C3.

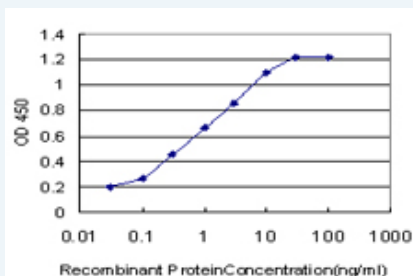
Lane 1: NBR1 transfected lysate(107.4 KDa).  
Lane 2: Non-transfected lysate.

[Protocol Download](#)

### Western Blot (Recombinant protein)

[Protocol Download](#)

### Sandwich ELISA (Recombinant protein)

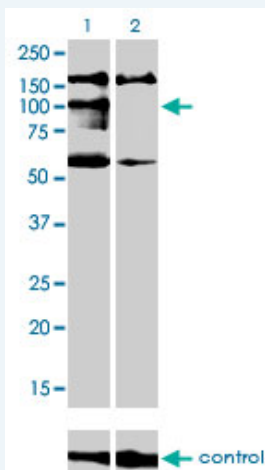


Detection limit for recombinant GST tagged NBR1 is approximately 0.03ng/ml as a capture antibody.

[Protocol Download](#)

### ELISA

#### RNAi Knockdown (Antibody validated)



Western blot analysis of NBR1 over-expressed 293 cell line, cotransfected with NBR1 Validated Chimera RNAi ( Cat # H00004077-R01V ) (Lane 2) or non-transfected control (Lane 1). Blot probed with NBR1 monoclonal antibody (M05), clone 5C3 (Cat # H00004077-M05 ). GAPDH ( 36.1 kDa ) used as specificity and loading control.

[Protocol Download](#)

### Gene Information

Entrez GeneID: [4077](#)

**GeneBank  
Accession#:** [NM\\_005899](#)

**Protein  
Accession#:** [NP\\_005890](#)

**Gene Name:** NBR1

**Gene Alias:** 1A1-3B,KIAA0049,M17S2,MIG19

**Gene  
Description:** neighbor of BRCA1 gene 1

**Omim ID:** [166945](#)

**Gene Ontology:** [Hyperlink](#)

**Gene Summary:** The protein encoded by this gene was originally identified as an ovarian tumor antigen monitored in ovarian cancer. The encoded protein contains a B-box/coiled coil motif, which is present in many genes with transformation potential, but the function of this protein is unknown. This gene is located on a region of chromosome 17q21.1 that is in close proximity to tumor suppressor gene BRCA1. Three alternatively spliced variants encoding the same protein have been identified for this gene. [provided by RefSeq]

**Other  
Designations:** membrane component, chromosome 17, surface marker 2 (ovarian carcinoma antigen CA125),migration-inducing protein 19

#### **Related Disease**

[Tobacco Use Disorder](#)

[服務條款](#) | [隱私權政策](#) | [著作及商標](#) | [網站地圖](#)

©2016 亞諾法生技股份有限公司 Abnova Corporation. 版權所有.