



SZABO SCANDIC

Part of Europa Biosite

Produktinformation



Forschungsprodukte & Biochemikalien



Zellkultur & Verbrauchsmaterial



Diagnostik & molekulare Diagnostik



Laborgeräte & Service

Weitere Information auf den folgenden Seiten!
See the following pages for more information!



Lieferung & Zahlungsart

siehe unsere [Liefer- und Versandbedingungen](#)

Zuschläge

- Mindermengenzuschlag
- Trockeneiszuschlag
- Gefahrgutzuschlag
- Expressversand

SZABO-SCANDIC HandelsgmbH

Quellenstraße 110, A-1100 Wien

T. +43(0)1 489 3961-0

F. +43(0)1 489 3961-7

mail@szabo-scandic.com

www.szabo-scandic.com

[linkedin.com/company/szaboscandic](https://www.linkedin.com/company/szaboscandic) 

NBR1 293T Cell Transient Overexpression Lysate(Denatured)

Catalog # : H00004077-T01

規格 : [100 uL]

List All

Specification

Transfected Cell Line: 293T

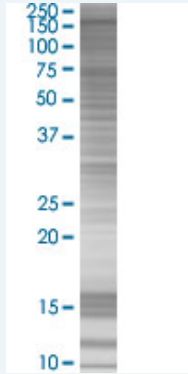
Plasmid: pCMV-NBR1 full-length

Host: Human

Theoretical MW (kDa): 106.37

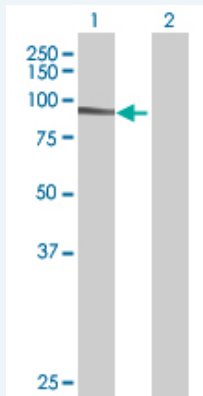
Quality Control Testing: Transient overexpression cell lysate was tested with Anti-NBR1 antibody (H00004077-B01) by Western Blots.

SDS-PAGE Gel



NBR1 transfected lysate.

Western Blot



Lane 1: NBR1 transfected lysate (106.37 KDa)

Lane 2: Non-transfected lysate.

Storage Buffer: 1X Sample Buffer (50 mM Tris-HCl, 2% SDS, 10% glycerol, 300 mM 2-mercaptoethanol, 0.01% Bromophenol blue)

Storage Instruction: Store at -80°C. Aliquot to avoid repeated freezing and thawing.

MSDS:  [Download](#)

Applications

Application Image

Western Blot

Western Blot

Gene Information

Entrez GeneID: [4077](#)

GeneBank Accession#: [NM_005899.3](#)

Protein Accession#: =

Gene Name: NBR1

Gene Alias: 1A1-3B,KIAA0049,M17S2,MIG19

Gene Description: neighbor of BRCA1 gene 1

Omim ID: [166945](#)

Gene Ontology: [Hyperlink](#)

Gene Summary: The protein encoded by this gene was originally identified as an ovarian tumor antigen monitored in ovarian cancer. The encoded protein contains a B-box/coiled coil motif, which is present in many genes with transformation potential, but the function of this protein is unknown. This gene is located on a region of chromosome 17q21.1 that is in close proximity to tumor suppressor gene BRCA1. Three alternatively spliced variants encoding the same protein have been identified for this gene. [provided by RefSeq]

Other Designations: membrane component, chromosome 17, surface marker 2 (ovarian carcinoma antigen CA125),migration-inducing protein 19

Related Disease

[Tobacco Use Disorder](#)