



SZABO SCANDIC

Part of Europa Biosite

Produktinformation



Forschungsprodukte & Biochemikalien



Zellkultur & Verbrauchsmaterial



Diagnostik & molekulare Diagnostik



Laborgeräte & Service

Weitere Information auf den folgenden Seiten!
See the following pages for more information!



Lieferung & Zahlungsart

siehe unsere [Liefer- und Versandbedingungen](#)

Zuschläge

- Mindermengenzuschlag
- Trockeneiszuschlag
- Gefahrgutzuschlag
- Expressversand

SZABO-SCANDIC HandelsgmbH

Quellenstraße 110, A-1100 Wien

T. +43(0)1 489 3961-0

F. +43(0)1 489 3961-7

mail@szabo-scandic.com

www.szabo-scandic.com

[linkedin.com/company/szaboscandic](https://www.linkedin.com/company/szaboscandic) 

MAD2L1 polyclonal antibody (A01)

Catalog # : H00004085-A01

規格 : [50 uL]

List All

Specification

Product Description: Mouse polyclonal antibody raised against a full-length recombinant MAD2L1.

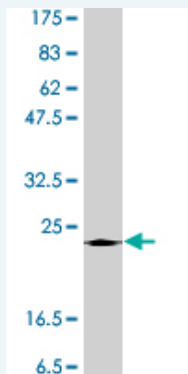
Immunogen: MAD2L1 (AAH00356, 1 a.a. ~ 205 a.a) full-length recombinant protein with GST tag.

Sequence: MALQLSREQGITLRGSAEIVAEFFSFGINSILYQRGYIPSETFTRVQKYGL
TLLVTTDLELIKYLNMMVEQLKDWLYKCSVQKLVVVISNIESGEVLERWQF
DIECDKTAKDDSAPREKSQKAIQDEIRSVIRQITATVTFLPLEVSCSFDLLI
YTDKDLVPEKWEESGPQFITNSEEVRLRSFTTTIHKVNSMVAYKIPVND

Host: Mouse

Reactivity: Human

Quality Control Testing: Antibody Reactive Against Recombinant Protein.



Western Blot detection against Immunogen (48.66 kDa) .

Storage Buffer: 50 % glycerol

Storage Instruction: Store at -20°C or lower. Aliquot to avoid repeated freezing and thawing.

MSDS:  [Download](#)

Datasheet:  [Download](#)

Applications

Western Blot (Recombinant protein)

 [Protocol Download](#)

ELISA

Gene Information

Entrez GeneID: [4085](#)

GeneBank [BC000356](#)

Application Image

Western Blot (Recombinant protein)

ELISA

Accession#:

Protein [AAH00356](#)

Accession#:

Gene Name: [MAD2L1](#)

Gene Alias: [HSMAD2](#),[MAD2](#)

Gene [MAD2 mitotic arrest deficient-like 1 \(yeast\)](#)

Description:

Omim ID: [601467](#)

Gene Ontology: [Hyperlink](#)

Gene Summary: MAD2L1 is a component of the mitotic spindle assembly checkpoint that prevents the onset of anaphase until all chromosomes are properly aligned at the metaphase plate. MAD2L1 is related to the MAD2L2 gene located on chromosome 1. A MAD2 pseudogene has been mapped to chromosome 14. [provided by RefSeq]

Other Designations: [MAD2 \(mitotic arrest deficient, yeast, homolog\)-like 1](#),[MAD2-like 1](#),[MAD2-like protein 1](#),[mitotic arrest deficient, yeast, homolog-like 1](#)

Gene Pathway

[Cell cycle](#)

Related Disease

[Alcoholism](#) [Breast cancer](#) [Breast Neoplasms Carcinoma, Ductal, Breast](#)
[Genetic Predisposition to Disease](#) [Lung Neoplasms](#)