



SZABO SCANDIC

Part of Europa Biosite

Produktinformation



Forschungsprodukte & Biochemikalien



Zellkultur & Verbrauchsmaterial



Diagnostik & molekulare Diagnostik



Laborgeräte & Service

Weitere Information auf den folgenden Seiten!
See the following pages for more information!



Lieferung & Zahlungsart

siehe unsere [Liefer- und Versandbedingungen](#)

Zuschläge

- Mindermengenzuschlag
- Trockeneiszuschlag
- Gefahrgutzuschlag
- Expressversand

SZABO-SCANDIC HandelsgmbH

Quellenstraße 110, A-1100 Wien

T. +43(0)1 489 3961-0

F. +43(0)1 489 3961-7

mail@szabo-scandic.com

www.szabo-scandic.com

[linkedin.com/company/szaboscandic](https://www.linkedin.com/company/szaboscandic) 



MAD2L1 MaxPab mouse polyclonal antibody (B01) MaxPab®

Catalog # : H00004085-B01

規格 : [50 uL]

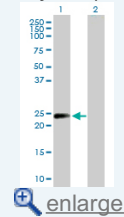
[List All](#)

Specification

| | |
|---------------------------------|--|
| Product Description: | Mouse polyclonal antibody raised against a full-length human MAD2L1 protein. |
| Immunogen: | MAD2L1 (NP_002349.1, 1 a.a. ~ 205 a.a) full-length human protein. |
| Sequence: | MALQLSREQGITLRGSAEIVAEFFSFGINSILYQRGYIPSETFTRVQKYGL TLLVTTDLELIKYLNNVVEQLKDWLYKCSVQKLVVISNIESGEVLERWQF DIECDKTAKDSDAPREKSQKAIQDEIRSVIRQITATVTFLPLEVSCSFDLLI YTDKDLVPEKWEESGPQFITNSEEVRLRSFTTTIHKVNSMVAYKIPVND |
| Host: | Mouse |
| Reactivity: | Human |
| Quality Control Testing: | Antibody reactive against mammalian transfected lysate. |
| Storage Buffer: | No additive |
| Storage Instruction: | Store at -20°C or lower. Aliquot to avoid repeated freezing and thawing. |
| Note: | For IHC and IF applications, antibody purification with Protein A will be needed prior to use. |
| MSDS: |  Download |
| Datasheet: |  Download |

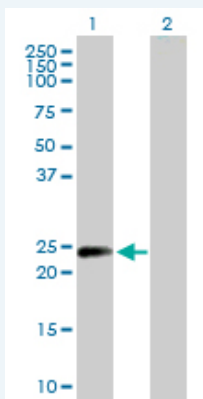
Application Image

Western Blot (Transfected lysate)



Applications

Western Blot (Transfected lysate)



Western Blot analysis of MAD2L1 expression in transfected 293T cell line (H00004085-T02) by MAD2L1 MaxPab polyclonal antibody.

Lane 1: MAD2L1 transfected lysate(23.50 KDa).

Lane 2: Non-transfected lysate.

 [Protocol Download](#)

Gene Information

Entrez GeneID: [4085](#)

**GeneBank
Accession#:** [NM_002358](#)

**Protein
Accession#:** [NP_002349.1](#)

Gene Name: MAD2L1

Gene Alias: HSMAD2, MAD2

**Gene
Description:** MAD2 mitotic arrest deficient-like 1 (yeast)

Omim ID: [601467](#)

Gene Ontology: [Hyperlink](#)

Gene Summary: MAD2L1 is a component of the mitotic spindle assembly checkpoint that prevents the onset of anaphase until all chromosomes are properly aligned at the metaphase plate. MAD2L1 is related to the MAD2L2 gene located on chromosome 1. A MAD2 pseudogene has been mapped to chromosome 14. [provided by RefSeq]

**Other
Designations:** MAD2 (mitotic arrest deficient, yeast, homolog)-like 1, MAD2-like 1, MAD2-like protein 1, mitotic arrest deficient, yeast, homolog-like 1

Gene Pathway

[Cell cycle](#)

Related Disease

[Alcoholism](#) [Breast cancer](#) [Breast Neoplasms](#) [Carcinoma, Ductal, Breast](#)
[Genetic Predisposition to Disease](#) [Lung Neoplasms](#)

[服務條款](#) | [隱私權政策](#) | [著作及商標](#) | [網站地圖](#)

©2016 亞諾法生技股份有限公司 Abnova Corporation. 版權所有.