



# SZABO SCANDIC

Part of Europa Biosite

## Produktinformation



Forschungsprodukte & Biochemikalien



Zellkultur & Verbrauchsmaterial



Diagnostik & molekulare Diagnostik



Laborgeräte & Service

Weitere Information auf den folgenden Seiten!  
See the following pages for more information!



### Lieferung & Zahlungsart

siehe unsere [Liefer- und Versandbedingungen](#)

### Zuschläge

- Mindermengenzuschlag
- Trockeneiszuschlag
- Gefahrgutzuschlag
- Expressversand

### SZABO-SCANDIC HandelsgmbH

Quellenstraße 110, A-1100 Wien

T. +43(0)1 489 3961-0

F. +43(0)1 489 3961-7

[mail@szabo-scandic.com](mailto:mail@szabo-scandic.com)

[www.szabo-scandic.com](http://www.szabo-scandic.com)

[linkedin.com/company/szaboscandic](https://www.linkedin.com/company/szaboscandic) 

## MAD2L1 monoclonal antibody (M01), clone 2E2-1D6

Catalog # : H00004085-M01

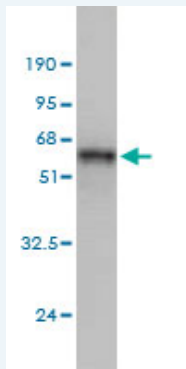
規格 : [ 100 ug ]

[List All](#)

### Specification

<b>Product Description:</b>	Mouse monoclonal antibody raised against a full length recombinant MAD2L1.
<b>Immunogen:</b>	MAD2L1 (AAH00356, 1 a.a. ~ 205 a.a) full-length recombinant protein with GST tag. MW of the GST tag alone is 26 KDa.
<b>Sequence:</b>	MALQLSREQGITLRGSAEIVAEFFSFGINSILYQRGYIPSETFTRVQKYGL TLLVTTDLELIKYLNMMVEQLKDWLYKCSVQKLVVVISNIESGEVLERWQF DIECDKTAKDDAPREKSQKAIQDEIRSVIRQITATVTFLPLEVSCSFDLLI YTDKDLVPEKWEEGPGQFITNSEEVRLRSFTTTIHKVNSMVAYKIPVND
<b>Host:</b>	Mouse
<b>Reactivity:</b>	Human
<b>Isotype:</b>	IgG2b kappa

**Quality Control Testing:** Antibody Reactive Against Recombinant Protein.



Western Blot detection against Immunogen (48.29 KDa) .

**Storage Buffer:** In 1x PBS, pH 7.4

**Storage Instruction:** Store at -20°C or lower. Aliquot to avoid repeated freezing and thawing.

**MSDS:** [Download](#)

**Datasheet:** [Download](#)

### Publication Reference

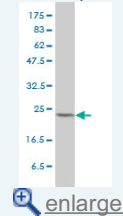
1. [RED, a spindle pole-associated protein, is required for kinetochore localization of MAD1, mitotic progression, and activation of the spindle assembly checkpoint.](#) Yeh PC, Yeh CC, Chen YC, Juang YL. J Biol Chem. 2012 Apr 6;287(15):11704-16. Epub 2012 Feb 18.

### Applications

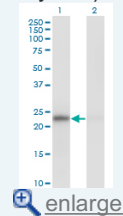
**Western Blot (Cell lysate)**

### Application Image

Western Blot (Cell lysate)

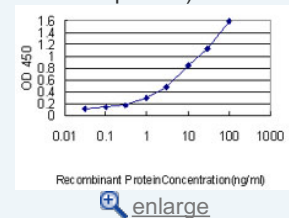


Western Blot (Transfected lysate)

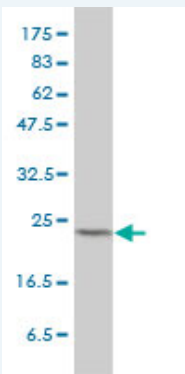


Western Blot (Recombinant protein)

Sandwich ELISA (Recombinant protein)



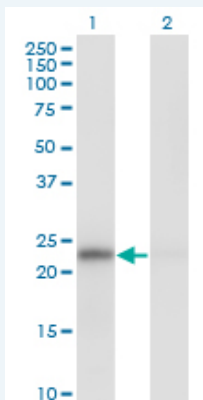
ELISA



MAD2L1 monoclonal antibody (M01), clone 2E2-1D6 Western Blot analysis of MAD2L1 expression in HeLa ( Cat # L013V1 ).

[Protocol Download](#)

#### Western Blot (Transfected lysate)



Western Blot analysis of MAD2L1 expression in transfected 293T cell line by MAD2L1 monoclonal antibody (M01), clone 2E2-1D6.

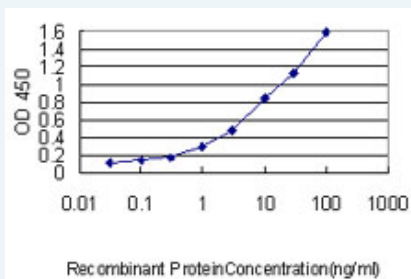
Lane 1: MAD2L1 transfected lysate(23.5 KDa).  
Lane 2: Non-transfected lysate.

[Protocol Download](#)

#### Western Blot (Recombinant protein)

[Protocol Download](#)

#### Sandwich ELISA (Recombinant protein)



Detection limit for recombinant GST tagged MAD2L1 is approximately 0.03ng/ml as a capture antibody.

[Protocol Download](#)

#### ELISA

#### Gene Information

Entrez GeneID: [4085](#)

GeneBank [BC000356](#)  
Accession#:

Protein [AAH00356](#)  
Accession#:

**Gene Name:** MAD2L1

**Gene Alias:** HSMAD2,MAD2

**Gene Description:** MAD2 mitotic arrest deficient-like 1 (yeast)

**Omim ID:** [601467](#)

**Gene Ontology:** [Hyperlink](#)

**Gene Summary:** MAD2L1 is a component of the mitotic spindle assembly checkpoint that prevents the onset of anaphase until all chromosomes are properly aligned at the metaphase plate. MAD2L1 is related to the MAD2L2 gene located on chromosome 1. A MAD2 pseudogene has been mapped to chromosome 14. [provided by RefSeq]

**Other Designations:** MAD2 (mitotic arrest deficient, yeast, homolog)-like 1,MAD2-like 1,MAD2-like protein 1,mitotic arrest deficient, yeast, homolog-like 1

#### **Gene Pathway**

[Cell cycle](#)

#### **Related Disease**

[Alcoholism](#) [Breast cancer](#) [Breast Neoplasms](#) [Carcinoma, Ductal, Breast](#)  
[Genetic Predisposition to Disease](#) [Lung Neoplasms](#)

[服務條款](#) | [隱私權政策](#) | [著作及商標](#) | [網站地圖](#)

©2016 亞諾法生技股份有限公司 Abnova Corporation. 版權所有.