



SZABO SCANDIC

Part of Europa Biosite

Produktinformation



Forschungsprodukte & Biochemikalien



Zellkultur & Verbrauchsmaterial



Diagnostik & molekulare Diagnostik



Laborgeräte & Service

Weitere Information auf den folgenden Seiten!
See the following pages for more information!



Lieferung & Zahlungsart

siehe unsere [Liefer- und Versandbedingungen](#)

Zuschläge

- Mindermengenzuschlag
- Trockeneiszuschlag
- Gefahrgutzuschlag
- Expressversand

SZABO-SCANDIC HandelsgmbH

Quellenstraße 110, A-1100 Wien

T. +43(0)1 489 3961-0

F. +43(0)1 489 3961-7

mail@szabo-scandic.com

www.szabo-scandic.com

[linkedin.com/company/szaboscandic](https://www.linkedin.com/company/szaboscandic) 

SMAD1 polyclonal antibody (A02)

Catalog # : H00004086-A02

規格 : [50 uL]

[List All](#)

Specification

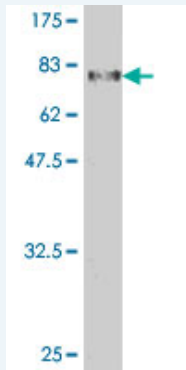
Product Description:	Mouse polyclonal antibody raised against a full-length recombinant SMAD1.
Immunogen:	SMAD1 (AAH01878.1, 1 a.a. ~ 465 a.a) full-length recombinant protein with GST tag.
Sequence:	MNVTSLFSFTSPAVKRLLGWKQGDEEEKWAEKAVDALVKKLKKKKGAM EELEKALSCPGQPSNCVTIPRSLDGRLQVSHRKGGLPHVIYCRVWRWPD LQSHHELKPLECCEFPFGSKQKEVCINPYHYKRVESPVLPVLPVPRHSEYN PQHSLLAQFRNLGQNEPHMPLNATFPDSFQQPNSHPPHSPNSSYPNSP GSSSSTYPHSPTSSDPGSPFQMPADTPPPAYLPPEDPMTQDGSQPM DTNMMAPPLPSEINRGDVQAVAYEEPKHWCSIVYYELNNRVGEAFHASSTSV LVDGFTDPSNKNRFLGLLSNVNRNSTIENTRRHIGKGVHLYYVGGVEY AECLSDSSIFVQSRNCNYHHGFHPTTVCKIPSGCSLKIFNNQEFAQLLAQ SVNHGFETVYELTKMCTIRMSFVKGWGAEYHRQDVTSTPCWIEIHLHGP LQWLDKVLTKMGSPHNPISSVS
Host:	Mouse
Reactivity:	Human

Application Image

Western Blot (Recombinant protein)

ELISA

Quality Control Testing: Antibody Reactive Against Recombinant Protein.



Western Blot detection against Immunogen (77.26 kDa) .

Storage Buffer: 50 % glycerol

Storage Instruction: Store at -20°C or lower. Aliquot to avoid repeated freezing and thawing.

MSDS: [Download](#)

Datasheet: [Download](#)

Applications

Western Blot (Recombinant protein)

[Protocol Download](#)

ELISA

Gene Information

Entrez GeneID: [4086](#)

**GeneBank
Accession#:** [BC001878](#)

**Protein
Accession#:** [AAH01878.1](#)

Gene Name: SMAD1

Gene Alias: BSP1,JV4-1,JV41,MADH1,MADR1

**Gene
Description:** SMAD family member 1

Omim ID: [601595](#)

Gene Ontology: [Hyperlink](#)

Gene Summary: The protein encoded by this gene belongs to the SMAD, a family of proteins similar to the gene products of the Drosophila gene 'mothers against decapentaplegic' (Mad) and the C. elegans gene Sma. SMAD proteins are signal transducers and transcriptional modulators that mediate multiple signaling pathways. This protein mediates the signals of the bone morphogenetic proteins (BMPs), which are involved in a range of biological activities including cell growth, apoptosis, morphogenesis, development and immune responses. In response to BMP ligands, this protein can be phosphorylated and activated by the BMP receptor kinase. The phosphorylated form of this protein forms a complex with SMAD4, which is important for its function in the transcription regulation. This protein is a target for SMAD-specific E3 ubiquitin ligases, such as SMURF1 and SMURF2, and undergoes ubiquitination and proteasome-mediated degradation. Alternatively spliced transcript variants encoding the same protein have been observed. [provided by RefSeq]

**Other
Designations:** MAD, mothers against decapentaplegic homolog 1, Mad-related protein 1, SMAD, mothers against DPP homolog 1, Sma- and Mad-related protein 1, TGF-beta signaling protein 1, mothers against DPP homolog 1, transforming growth factor-beta signaling protein 1

Gene Pathway

[TGF-beta signaling pathway](#)

Related Disease

[Cleft Lip](#) [Cleft Palate](#) [Diabetes Mellitus, Type 1](#) [Diabetic Nephropathies](#)
[Genetic Predisposition to Disease](#) [Head and Neck Neoplasms](#) [Hemochromatosis](#)
[Hypertension](#), [Pulmonary](#) [Kidney Failure](#), [Chronic Neoplasm Recurrence](#), [Local Neoplasms](#), [Second Primary](#) [Obesity](#) [Ovarian Failure](#), [Premature Polycystic Ovary Syndrome](#) [Puberty](#), [Delayed Puberty](#), [Precocious](#) [Thrombophilia](#)
[Tobacco Use Disorder](#)