



# SZABO SCANDIC

Part of Europa Biosite

## Produktinformation



Forschungsprodukte & Biochemikalien



Zellkultur & Verbrauchsmaterial



Diagnostik & molekulare Diagnostik



Laborgeräte & Service

Weitere Information auf den folgenden Seiten!  
See the following pages for more information!



### Lieferung & Zahlungsart

siehe unsere [Liefer- und Versandbedingungen](#)

### Zuschläge

- Mindermengenzuschlag
- Trockeneiszuschlag
- Gefahrgutzuschlag
- Expressversand

### SZABO-SCANDIC HandelsgmbH

Quellenstraße 110, A-1100 Wien

T. +43(0)1 489 3961-0

F. +43(0)1 489 3961-7

[mail@szabo-scandic.com](mailto:mail@szabo-scandic.com)

[www.szabo-scandic.com](http://www.szabo-scandic.com)

[linkedin.com/company/szaboscandic](https://www.linkedin.com/company/szaboscandic) 

# SMAD1 purified MaxPab rabbit polyclonal antibody (D01P) MaxPab®

Catalog # : H00004086-D01P

規格 : [ 100 ug ]

[List All](#)

## Specification

**Product Description:** Rabbit polyclonal antibody raised against a full-length human SMAD1 protein.

**Immunogen:** SMAD1 (NP\_001003688.1, 1 a.a. ~ 465 a.a) full-length human protein.

**Sequence:**  
 MNVTSLSFSTSPAVKRLLGWKQGDEEEKWAEKAVDALVKLKKKKGAM  
 EELEKALSCPGQPSNCVTIPRSLDGRLQVSHRKGLPHVIYCRVWRWPD  
 QSHHELKPLECCEFPFGSKQKEVCINPYHYKRVESPVLPVLPVPRHSEYN  
 PQHSLLAQFRNLGQNEPHMPLNATFPDSFQQPNSHPFPHSPNSSYPNSP  
 GSSSSTYPHSPTSSDPGSPFQMPADTPPPAYLPPEDPMTQDGSQPMDT  
 NMMAPPLPSEINRGDVQAVAYEEPKHWCISIVYELNNRVGEAFHASSTSV  
 LVDGFTDPSNNKNRFLGLLSNVNRNSTIENTRRHIGKGVHLYYVGGVEY  
 AECLSDSSIFVQSRNCNYHHGFHPTTVCKIPSGCSLKIFNNQEFQAQLLAQ  
 SVNHGFFETVYELTKMCTIRMSFVKGWGAEYHRQDVTSTPCWIEIHLHGP  
 LQWLDKVLTKMGSPHNPISVS

**Host:** Rabbit

**Reactivity:** Human

**Quality Control Testing:** Antibody reactive against mammalian transfected lysate.

**Storage Buffer:** In 1x PBS, pH 7.4

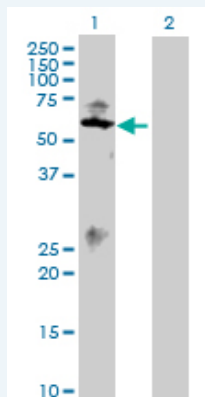
**Storage Instruction:** Store at -20°C or lower. Aliquot to avoid repeated freezing and thawing.

**MSDS:** [Download](#)

**Datasheet:** [Download](#)

## Applications

### Western Blot (Transfected lysate)

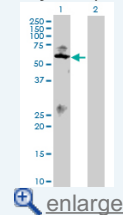


Western Blot analysis of SMAD1 expression in transfected 293T cell line (H00004086-T01) by SMAD1 MaxPab polyclonal antibody.

Lane 1: SMAD1 transfected lysate(52.30 KDa).  
 Lane 2: Non-transfected lysate.

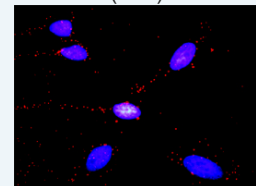
## Application Image

### Western Blot (Transfected lysate)



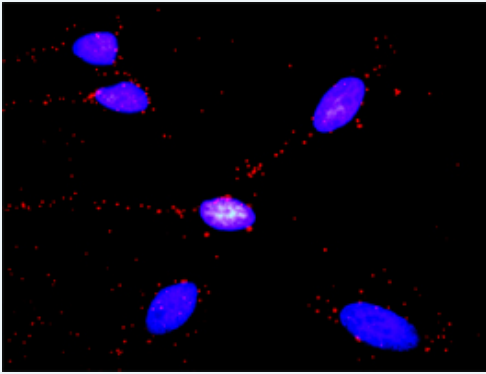
[enlarge](#)

### In situ Proximity Ligation Assay (Cell)



[enlarge](#)

**In situ Proximity Ligation Assay (Cell)**



Proximity Ligation Analysis of protein-protein interactions between SMAD1 and GLI3. HeLa cells were stained with anti-SMAD1 rabbit purified polyclonal 1:1200 and anti-GLI3 mouse monoclonal antibody 1:50. Each red dot represents the detection of protein-protein interaction complex, and nuclei were counterstained with DAPI (blue).

**Gene Information**

**Entrez GeneID:** [4086](#)

**GeneBank Accession#:** [NM\\_001003688](#)

**Protein Accession#:** [NP\\_001003688.1](#)

**Gene Name:** SMAD1

**Gene Alias:** BSP1,JV4-1,JV41,MADH1,MADR1

**Gene Description:** SMAD family member 1

**Omim ID:** [601595](#)

**Gene Ontology:** [Hyperlink](#)

**Gene Summary:** The protein encoded by this gene belongs to the SMAD, a family of proteins similar to the gene products of the *Drosophila* gene 'mothers against decapentaplegic' (*Mad*) and the *C. elegans* gene *Sma*. SMAD proteins are signal transducers and transcriptional modulators that mediate multiple signaling pathways. This protein mediates the signals of the bone morphogenetic proteins (BMPs), which are involved in a range of biological activities including cell growth, apoptosis, morphogenesis, development and immune responses. In response to BMP ligands, this protein can be phosphorylated and activated by the BMP receptor kinase. The phosphorylated form of this protein forms a complex with SMAD4, which is important for its function in the transcription regulation. This protein is a target for SMAD-specific E3 ubiquitin ligases, such as SMURF1 and SMURF2, and undergoes ubiquitination and proteasome-mediated degradation. Alternatively spliced transcript variants encoding the same protein have been observed. [provided by RefSeq]

**Other Designations:** MAD, mothers against decapentaplegic homolog 1, Mad-related protein 1, SMAD, mothers against DPP homolog 1, Sma- and Mad-related protein 1, TGF-beta signaling protein 1, mothers against DPP homolog 1, transforming growth factor-beta signaling protein 1

**Gene Pathway**

[TGF-beta signaling pathway](#)

## Related Disease

---

[Cleft Lip](#) [Cleft Palate](#) [Diabetes Mellitus, Type 1](#) [Diabetic Nephropathies](#)  
[Genetic Predisposition to Disease](#) [Head and Neck Neoplasms](#) [Hemochromatosis](#)  
[Hypertension](#), [Pulmonary](#) [Kidney Failure](#), [Chronic](#) [Neoplasm Recurrence](#), [Local](#)  
[Neoplasms](#), [Second Primary](#) [Obesity](#) [Ovarian Failure](#), [Premature](#)  
[Polycystic Ovary Syndrome](#) [Puberty](#), [Delayed Puberty](#), [Precocious](#) [Thrombophilia](#)  
[Tobacco Use Disorder](#)

---

[服務條款](#) | [隱私權政策](#) | [著作及商標](#) | [網站地圖](#)

©2016 亞諾法生技股份有限公司 Abnova Corporation. 版權所有.