



# SZABO SCANDIC

Part of Europa Biosite

## Produktinformation



Forschungsprodukte & Biochemikalien



Zellkultur & Verbrauchsmaterial



Diagnostik & molekulare Diagnostik



Laborgeräte & Service

Weitere Information auf den folgenden Seiten!  
See the following pages for more information!



### Lieferung & Zahlungsart

siehe unsere [Liefer- und Versandbedingungen](#)

### Zuschläge

- Mindermengenzuschlag
- Trockeneiszuschlag
- Gefahrgutzuschlag
- Expressversand

### SZABO-SCANDIC HandelsgmbH

Quellenstraße 110, A-1100 Wien

T. +43(0)1 489 3961-0

F. +43(0)1 489 3961-7

[mail@szabo-scandic.com](mailto:mail@szabo-scandic.com)

[www.szabo-scandic.com](http://www.szabo-scandic.com)

[linkedin.com/company/szaboscandic](https://www.linkedin.com/company/szaboscandic) 

## SMAD1 monoclonal antibody (M02), clone 1D3

Catalog # : H00004086-M02

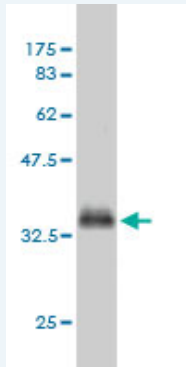
規格 : [ 100 ug ]

[List All](#)

### Specification

<b>Product Description:</b>	Mouse monoclonal antibody raised against a partial recombinant SMAD1.
<b>Immunogen:</b>	SMAD1 (NP_005891, 1 a.a. ~ 110 a.a) partial recombinant protein with GST tag. MW of the GST tag alone is 26 KDa.
<b>Sequence:</b>	MNVTSLFSFTSPAVKRLLGWKQGDEEEKWAEKAVDALVKKLKKGAM EELEKALSCPGQPSNCVTIPRSLDGRLQVSHRKGLPHVIYCRVWRWPD LQSHHEKPLECCE
<b>Host:</b>	Mouse
<b>Reactivity:</b>	Human
<b>Isotype:</b>	IgG1 kappa

**Quality Control Testing:** Antibody Reactive Against Recombinant Protein.



Western Blot detection against Immunogen (37.84 KDa) .

**Storage Buffer:** In 1x PBS, pH 7.4

**Storage Instruction:** Store at -20°C or lower. Aliquot to avoid repeated freezing and thawing.

**MSDS:** [Download](#)

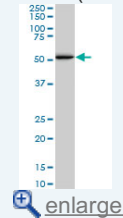
**Datasheet:** [Download](#)

### Applications

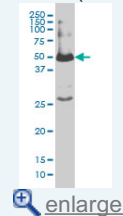
Western Blot (Cell lysate)

### Application Image

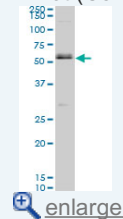
Western Blot (Cell lysate)



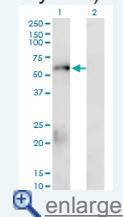
Western Blot (Cell lysate)



Western Blot (Cell lysate)

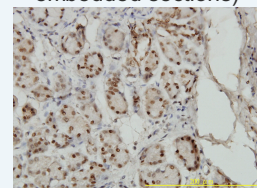


Western Blot (Transfected lysate)



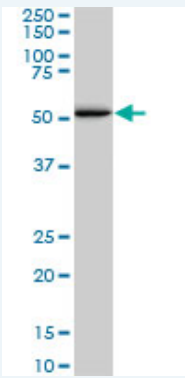
Western Blot (Recombinant protein)

Immunohistochemistry  
(Formalin/PFA-fixed paraffin-embedded sections)



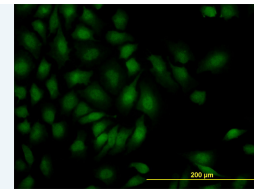
[enlarge](#)

Immunofluorescence



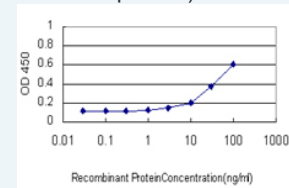
SMAD1 monoclonal antibody (M02), clone 1D3. Western Blot analysis of SMAD1 expression in A-549 ( Cat # L025V1 ).

[Protocol Download](#)



[enlarge](#)

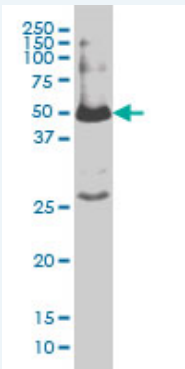
Sandwich ELISA (Recombinant protein)



[enlarge](#)

ELISA

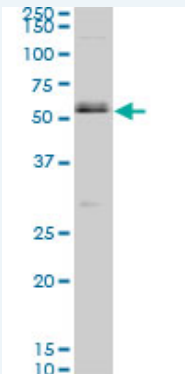
### Western Blot (Cell lysate)



SMAD1 monoclonal antibody (M02), clone 1D3 Western Blot analysis of SMAD1 expression in IMR-32 ( Cat # L008V1 ).

[Protocol Download](#)

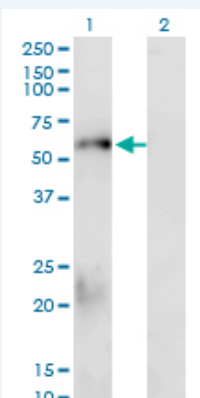
### Western Blot (Cell lysate)



SMAD1 monoclonal antibody (M02), clone 1D3. Western Blot analysis of SMAD1 expression in MES-SA/Dx5 ( Cat # L021V1 ).

[Protocol Download](#)

### Western Blot (Transfected lysate)



Western Blot analysis of SMAD1 expression in transfected 293T cell line by SMAD1 monoclonal antibody (M02), clone 1D3.

Lane 1: SMAD1 transfected lysate(52.3 KDa).  
Lane 2: Non-transfected lysate.

 [Protocol Download](#)

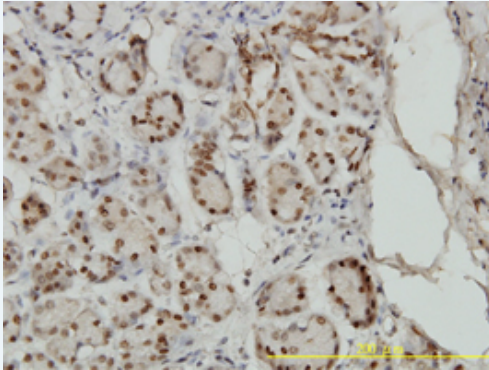
---

### Western Blot (Recombinant protein)

 [Protocol Download](#)

---

### Immunohistochemistry (Formalin/PFA-fixed paraffin-embedded sections)



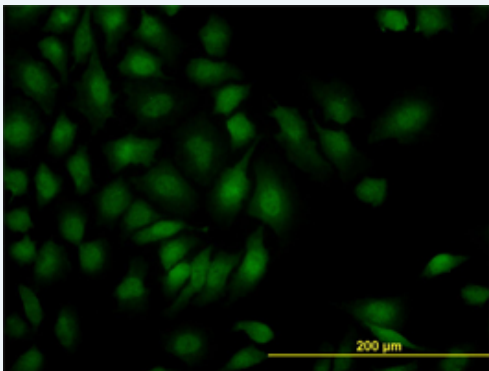
 enlarge this image


Immunoperoxidase of monoclonal antibody to SMAD1 on formalin-fixed paraffin-embedded human salivary gland tissue. [antibody concentration 3 ug/ml]

 [Protocol Download](#)

---

### Immunofluorescence



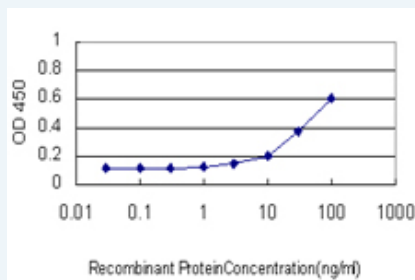
 enlarge this image

Immunofluorescence of monoclonal antibody to SMAD1 on HeLa cell. [antibody concentration 10 ug/ml]

 [Protocol Download](#)

---

### Sandwich ELISA (Recombinant protein)



Detection limit for recombinant GST tagged SMAD1 is approximately 3ng/ml as a capture antibody.

 [Protocol Download](#)

---

### ELISA

---

#### Gene Information

Entrez GeneID: [4086](#)

GeneBank [NM\\_005900](#)  
Accession#:

**Protein** [NP\\_005891](#)

**Accession#:**

**Gene Name:** SMAD1

**Gene Alias:** BSP1,JV4-1,JV41,MADH1,MADR1

**Gene** SMAD family member 1

**Description:**

**Omim ID:** [601595](#)

**Gene Ontology:** [Hyperlink](#)

**Gene Summary:** The protein encoded by this gene belongs to the SMAD, a family of proteins similar to the gene products of the Drosophila gene 'mothers against decapentaplegic' (Mad) and the C. elegans gene Sma. SMAD proteins are signal transducers and transcriptional modulators that mediate multiple signaling pathways. This protein mediates the signals of the bone morphogenetic proteins (BMPs), which are involved in a range of biological activities including cell growth, apoptosis, morphogenesis, development and immune responses. In response to BMP ligands, this protein can be phosphorylated and activated by the BMP receptor kinase. The phosphorylated form of this protein forms a complex with SMAD4, which is important for its function in the transcription regulation. This protein is a target for SMAD-specific E3 ubiquitin ligases, such as SMURF1 and SMURF2, and undergoes ubiquitination and proteasome-mediated degradation. Alternatively spliced transcript variants encoding the same protein have been observed. [provided by RefSeq]

**Other Designations:** MAD, mothers against decapentaplegic homolog 1, Mad-related protein 1, SMAD, mothers against DPP homolog 1, Sma- and Mad-related protein 1, TGF-beta signaling protein 1, mothers against DPP homolog 1, transforming growth factor-beta signaling protein 1

### Gene Pathway

[TGF-beta signaling pathway](#)

### Related Disease

[Cleft Lip](#) [Cleft Palate](#) [Diabetes Mellitus, Type 1](#) [Diabetic Nephropathies](#)  
[Genetic Predisposition to Disease](#) [Head and Neck Neoplasms](#) [Hemochromatosis](#)  
[Hypertension](#) [Pulmonary Kidney Failure](#) [Chronic Neoplasm Recurrence](#) [Local Neoplasms](#) [Second Primary](#) [Obesity](#) [Ovarian Failure](#) [Premature Polycystic Ovary Syndrome](#) [Puberty, Delayed](#) [Puberty, Precocious](#) [Thrombophilia](#)  
[Tobacco Use Disorder](#)

[服務條款](#) | [隱私權政策](#) | [著作及商標](#) | [網站地圖](#)

©2016 亞諾法生技股份有限公司 Abnova Corporation. 版權所有.