



SZABO SCANDIC

Part of Europa Biosite

Produktinformation



Forschungsprodukte & Biochemikalien



Zellkultur & Verbrauchsmaterial



Diagnostik & molekulare Diagnostik



Laborgeräte & Service

Weitere Information auf den folgenden Seiten!
See the following pages for more information!



Lieferung & Zahlungsart

siehe unsere [Liefer- und Versandbedingungen](#)

Zuschläge

- Mindermengenzuschlag
- Trockeneiszuschlag
- Gefahrgutzuschlag
- Expressversand

SZABO-SCANDIC HandelsgmbH

Quellenstraße 110, A-1100 Wien

T. +43(0)1 489 3961-0

F. +43(0)1 489 3961-7

mail@szabo-scandic.com

www.szabo-scandic.com

[linkedin.com/company/szaboscandic](https://www.linkedin.com/company/szaboscandic) 

SMAD1 monoclonal antibody (M03), clone 2E9

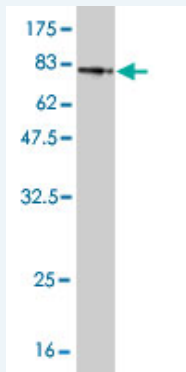
Catalog # : H00004086-M03

規格 : [100 ug]

[List All](#)

Specification

Product Description:	Mouse monoclonal antibody raised against a full length recombinant SMAD1.
Immunogen:	SMAD1 (AAH01878.1, 1 a.a. ~ 465 a.a) full-length recombinant protein with GST tag. MW of the GST tag alone is 26 KDa.
Sequence:	MNVTSLFSFTSPAVKRLLGWKQGDDEEEKWAEKAVDALVKKLKKGAM EELKALSCPGQPSNCVTIPRSLDGRLQVSHRGLPHVIYCRVWRWPD QSHHELKPLECCEFPFGSKQKEVCINPYHYKRVESVLPVLPVPRHSEYN PQSHLLAQFRNLGQNEPHMPLNATFPDSFQQPNHPFPSPNSYPNSP GSSSTYPHSPSSDPGSPFQMPADTPPPAYLPPEDPMTQDGSQPM NMMAPPLPSEINRGDVQAVAYEEPKHWCISIVYELNRRVGEAFHASSTSV LVDGFTDPSNNKNRFLGLLSNVNRNSTIENTRRHIGKGVHLYYVGGVEY AECLSDSSIFVQSRNCNYHHGFHPTTVCKIPSGCSLKIFNNQEFQAQLLAQ SVNHGFETVYELTKMCTIRMSFVKGWGAEYHRQDVTSTPCWIEIHLHGP LQWLDKVLTKMGSPHNPISSVS
Host:	Mouse
Reactivity:	Human, Mouse, Rat
Isotype:	IgG1 Kappa
Quality Control Testing:	Antibody Reactive Against Recombinant Protein.



Western Blot detection against Immunogen (76.89 KDa) .

Storage Buffer: In 1x PBS, pH 7.4

Storage Instruction: Store at -20°C or lower. Aliquot to avoid repeated freezing and thawing.

MSDS: [Download](#)

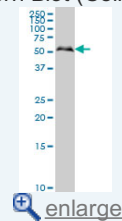
Datasheet: [Download](#)

Publication Reference

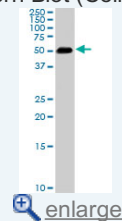
1. [Temporal and regional patterns of Smad activation in the rat hippocampus following global ischemia.](#)
Nakajima T, Yanagihara M, Nishii HJ *Neurol Sci.* 2013 Nov 19. pii: S0022-510X(13)03041-4. doi: 10.1016/j.jns.2013.11.012.

Application Image

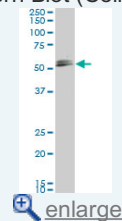
Western Blot (Cell lysate)



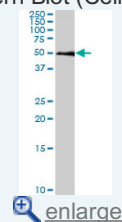
Western Blot (Cell lysate)



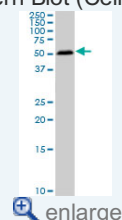
Western Blot (Cell lysate)



Western Blot (Cell lysate)



Western Blot (Cell lysate)

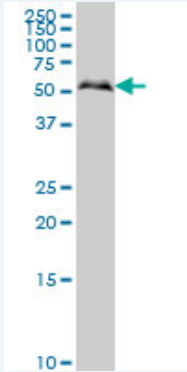


Western Blot (Recombinant protein)

Immunohistochemistry (Formalin/PFA-fixed paraffin-embedded sections)

Applications

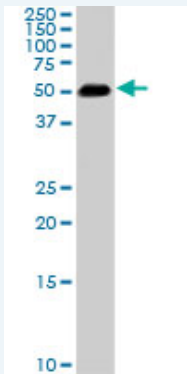
Western Blot (Cell lysate)



SMAD1 monoclonal antibody (M03), clone 2E9 Western Blot analysis of SMAD1 expression in HeLa (Cat # L013V1).

 [Protocol Download](#)

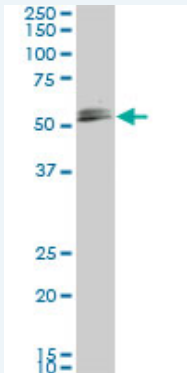
Western Blot (Cell lysate)



SMAD1 monoclonal antibody (M03), clone 2E9. Western Blot analysis of SMAD1 expression in PC-12 (Cat # L012V1).

 [Protocol Download](#)

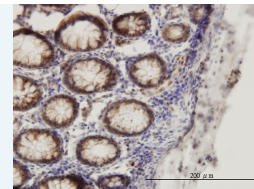
Western Blot (Cell lysate)




SMAD1 monoclonal antibody (M03), clone 2E9. Western Blot analysis of SMAD1 expression in IMR-32 (Cat # L008V1).

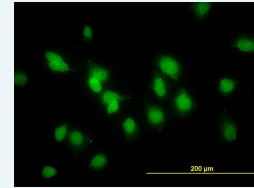
 [Protocol Download](#)

Western Blot (Cell lysate)



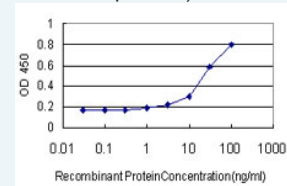
 [enlarge](#)


Immunofluorescence



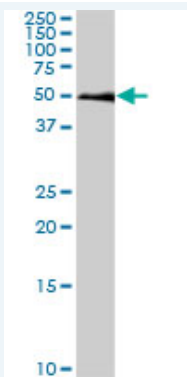
 [enlarge](#)

Sandwich ELISA (Recombinant protein)




 [enlarge](#)

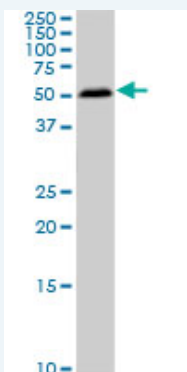
ELISA




SMAD1 monoclonal antibody (M03), clone 2E9. Western Blot analysis of SMAD1 expression in Raw 264.7 (Cat # L024V1).

 [Protocol Download](#)


Western Blot (Cell lysate)



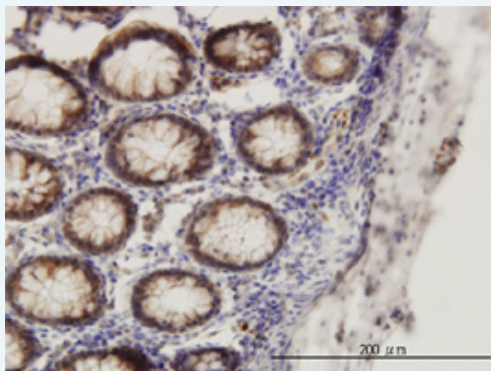
SMAD1 monoclonal antibody (M03), clone 2E9. Western Blot analysis of SMAD1 expression in NIH/3T3 (Cat # L018V1).


 [Protocol Download](#)

Western Blot (Recombinant protein)


 [Protocol Download](#)

Immunohistochemistry (Formalin/PFA-fixed paraffin-embedded sections)

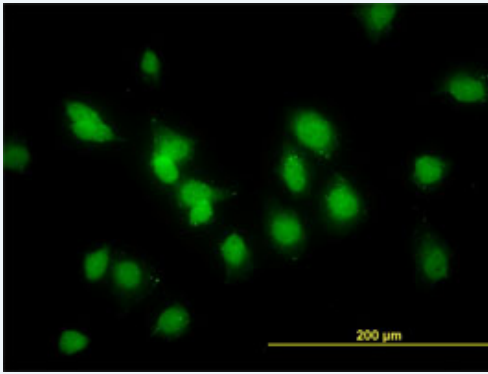


 [enlarge this image](#)

Immunoperoxidase of monoclonal antibody to SMAD1 on formalin-fixed paraffin-embedded human colon. [antibody concentration 3 ug/ml]

 [Protocol Download](#)

Immunofluorescence

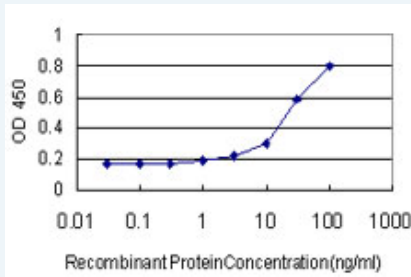


[enlarge this image](#)

Immunofluorescence of monoclonal antibody to SMAD1 on HeLa cell. [antibody concentration 10 ug/ml]

[Protocol Download](#)

Sandwich ELISA (Recombinant protein)



Detection limit for recombinant GST tagged SMAD1 is approximately 1 ng/ml as a capture antibody.

[Protocol Download](#)

ELISA

Gene Information

Entrez GeneID: [4086](#)

GeneBank [BC001878](#)

Accession#:

Protein [AAH01878.1](#)

Accession#:

Gene Name: SMAD1

Gene Alias: BSP1,JV4-1,JV41,MADH1,MADR1

Gene SMAD family member 1

Description:

Omim ID: [601595](#)

Gene Ontology: [Hyperlink](#)

Gene Summary: The protein encoded by this gene belongs to the SMAD, a family of proteins similar to the gene products of the Drosophila gene 'mothers against decapentaplegic' (Mad) and the C. elegans gene Sma. SMAD proteins are signal transducers and transcriptional modulators that mediate multiple signaling pathways. This protein mediates the signals of the bone morphogenetic proteins (BMPs), which are involved in a range of biological activities including cell growth, apoptosis, morphogenesis, development and immune responses. In response to BMP ligands, this protein can be phosphorylated and activated by the BMP receptor kinase. The phosphorylated form of this protein forms a complex with SMAD4, which is important for its function in the transcription regulation. This protein is a target for SMAD-specific E3 ubiquitin ligases, such as SMURF1 and SMURF2, and undergoes

ubiquitination and proteasome-mediated degradation. Alternatively spliced transcript variants encoding the same protein have been observed. [provided by RefSeq]

Other Designations: MAD, mothers against decapentaplegic homolog 1, Mad-related protein 1, SMAD, mothers against DPP homolog 1, Sma- and Mad-related protein 1, TGF-beta signaling protein 1, mothers against DPP homolog 1, transforming growth factor-beta signaling protein 1

Gene Pathway

[TGF-beta signaling pathway](#)

Related Disease

[Cleft Lip](#) [Cleft Palate](#) [Diabetes Mellitus, Type 1](#) [Diabetic Nephropathies](#)
[Genetic Predisposition to Disease](#) [Head and Neck Neoplasms](#) [Hemochromatosis](#)
[Hypertension](#) [Pulmonary](#) [Kidney Failure](#) [Chronic Neoplasm Recurrence](#) [Local Neoplasms](#) [Second Primary](#) [Obesity](#) [Ovarian Failure](#) [Premature Polycystic Ovary Syndrome](#) [Puberty, Delayed](#) [Puberty, Precocious](#) [Thrombophilia](#)
[Tobacco Use Disorder](#)

[服務條款](#) | [隱私權政策](#) | [著作及商標](#) | [網站地圖](#)

©2016 亞諾法生技股份有限公司 Abnova Corporation. 版權所有.