



# SZABO SCANDIC

Part of Europa Biosite

## Produktinformation



Forschungsprodukte & Biochemikalien



Zellkultur & Verbrauchsmaterial



Diagnostik & molekulare Diagnostik



Laborgeräte & Service

Weitere Information auf den folgenden Seiten!  
See the following pages for more information!



### Lieferung & Zahlungsart

siehe unsere [Liefer- und Versandbedingungen](#)

### Zuschläge

- Mindermengenzuschlag
- Trockeneiszuschlag
- Gefahrgutzuschlag
- Expressversand

### SZABO-SCANDIC HandelsgmbH

Quellenstraße 110, A-1100 Wien

T. +43(0)1 489 3961-0

F. +43(0)1 489 3961-7

[mail@szabo-scandic.com](mailto:mail@szabo-scandic.com)

[www.szabo-scandic.com](http://www.szabo-scandic.com)

[linkedin.com/company/szaboscandic](https://www.linkedin.com/company/szaboscandic) 

## SMAD2 monoclonal antibody (M08), clone 3B8

Catalog # : H00004087-M08

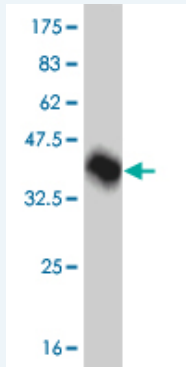
規格 : [ 100 ug ]

[List All](#)

### Specification

<b>Product Description:</b>	Mouse monoclonal antibody raised against a full length recombinant SMAD2.
<b>Immunogen:</b>	SMAD2 (NP_005892, 16 a.a. ~ 119 a.a) full length recombinant protein with GST tag. MW of the GST tag alone is 26 KDa.
<b>Sequence:</b>	LGWKKSAAGSGGAGGGEQNGQEEKWCEKAVKSLVKLKKKTGRLDELE KAITQNCNTKCVTIPSTCSEIWGLSTPNTIDQWDTTGLYSFSEQTRSLD GRLQVSH
<b>Host:</b>	Mouse
<b>Reactivity:</b>	Human
<b>Isotype:</b>	IgG2b Kappa

**Quality Control Testing:** Antibody Reactive Against Recombinant Protein.



Western Blot detection against Immunogen (37.44 KDa) .

**Storage Buffer:** In 1x PBS, pH 7.4

**Storage Instruction:** Store at -20°C or lower. Aliquot to avoid repeated freezing and thawing.

**MSDS:** [Download](#)

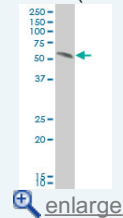
**Datasheet:** [Download](#)

### Applications

Western Blot (Cell lysate)

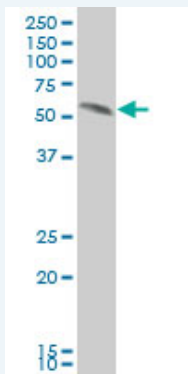
### Application Image

Western Blot (Cell lysate)



Western Blot (Recombinant protein)

ELISA



SMAD2 monoclonal antibody (M08), clone 3B8 Western Blot analysis of SMAD2 expression in HeLa ( Cat # L013V1 ).

 [Protocol Download](#)

#### Western Blot (Recombinant protein)

 [Protocol Download](#)

#### ELISA

#### Gene Information

**Entrez GeneID:** [4087](#)

**GeneBank** [NM\\_005901](#)

**Accession#:**

**Protein** [NP\\_005892](#)

**Accession#:**

**Gene Name:** SMAD2

**Gene Alias:** JV18, JV18-1, MADH2, MADR2, MGC22139, MGC34440, hMAD-2, hSMAD2

**Gene** SMAD family member 2

**Description:**

**Omim ID:** [601366](#)

**Gene Ontology:** [Hyperlink](#)

**Gene Summary:** The protein encoded by this gene belongs to the SMAD, a family of proteins similar to the gene products of the Drosophila gene 'mothers against decapentaplegic' (Mad) and the C. elegans gene Sma. SMAD proteins are signal transducers and transcriptional modulators that mediate multiple signaling pathways. This protein mediates the signal of the transforming growth factor (TGF)-beta, and thus regulates multiple cellular processes, such as cell proliferation, apoptosis, and differentiation. This protein is recruited to the TGF-beta receptors through its interaction with the SMAD anchor for receptor activation (SARA) protein. In response to TGF-beta signal, this protein is phosphorylated by the TGF-beta receptors. The phosphorylation induces the dissociation of this protein with SARA and the association with the family member SMAD4. The association with SMAD4 is important for the translocation of this protein into the nucleus, where it binds to target promoters and forms a transcription repressor complex with other cofactors. This protein can also be phosphorylated by activin type 1 receptor kinase, and mediates the signal from the activin. Alternatively spliced transcript variants encoding the same protein have been observed. [provided by RefSeq]

**Other Designations:** MAD, mothers against decapentaplegic homolog 2, Mad protein homolog, Mad, mothers against decapentaplegic homolog 2, Mad-related protein 2, SMAD, mothers against DPP homolog 2, Sma- and Mad-related protein 2, mother against DPP homolog 2

## Gene Pathway

---

[Adherens junction](#) [Cell cycle](#) [Colorectal cancer](#) [Pancreatic cancer](#) [Pathways in cancer](#)  
[TGF-beta signaling pathway](#) [Wnt signaling pathway](#)

## Related Disease

---

[Adenocarcinoma](#) [Cleft Lip](#) [Cleft Palate](#) [Colitis, Ulcerative](#) [Colorectal Neoplasms](#)  
[Crohn's disease](#) [Esophageal Neoplasms](#) [Genetic Predisposition to Disease](#)  
[Hypertension, Pulmonary](#) [Inflammatory Bowel Diseases](#) [Liver Cirrhosis](#) [Obesity](#)  
[Osteoporosis](#) [Ovarian Failure, Premature](#) [Pancreatic cancer](#) [Pancreatic Neoplasms](#)  
[Polycystic Ovary Syndrome](#) [Puberty, Delayed](#) [Puberty, Precocious](#)

[... see more](#)

---

[服務條款](#) | [隱私權政策](#) | [著作及商標](#) | [網站地圖](#)

©2016 亞諾法生技股份有限公司 Abnova Corporation. 版權所有.