



SZABO SCANDIC

Part of Europa Biosite

Produktinformation



Forschungsprodukte & Biochemikalien



Zellkultur & Verbrauchsmaterial



Diagnostik & molekulare Diagnostik



Laborgeräte & Service

Weitere Information auf den folgenden Seiten!
See the following pages for more information!



Lieferung & Zahlungsart

siehe unsere [Liefer- und Versandbedingungen](#)

Zuschläge

- Mindermengenzuschlag
- Trockeneiszuschlag
- Gefahrgutzuschlag
- Expressversand

SZABO-SCANDIC HandelsgmbH

Quellenstraße 110, A-1100 Wien

T. +43(0)1 489 3961-0

F. +43(0)1 489 3961-7

mail@szabo-scandic.com

www.szabo-scandic.com

[linkedin.com/company/szaboscandic](https://www.linkedin.com/company/szaboscandic) 

SMAD3 monoclonal antibody (M01), clone 2C12

Catalog # : H00004088-M01

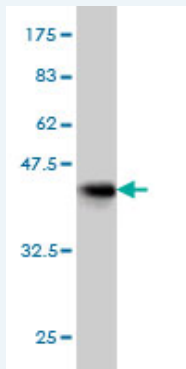
規格 : [100 ug]

List All

Specification

Product Description:	Mouse monoclonal antibody raised against a partial recombinant SMAD3.
Immunogen:	SMAD3 (NP_005893, 120 a.a. ~ 221 a.a) partial recombinant protein with GST tag. MW of the GST tag alone is 26 KDa.
Sequence:	VCVNPHYQRVETPVLPPVLVPRHTEIPAEFPPLDDYSHSIPENTNFPAGI EPQSNIPETPPPGYLSHGGETSDHQMNHSM DAGSPNLSNPMPAHNLL DL
Host:	Mouse
Reactivity:	Human
Isotype:	IgG2a Kappa

Quality Control Testing: Antibody Reactive Against Recombinant Protein.



Western Blot detection against Immunogen (36.96 KDa) .

Storage Buffer: In 1x PBS, pH 7.4

Storage Instruction: Store at -20°C or lower. Aliquot to avoid repeated freezing and thawing.

MSDS: [Download](#)

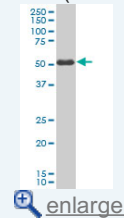
Datasheet: [Download](#)

Applications

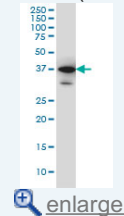
Western Blot (Tissue lysate)

Application Image

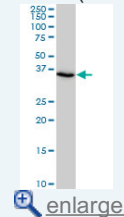
Western Blot (Tissue lysate)



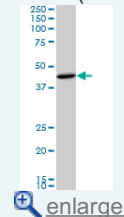
Western Blot (Cell lysate)



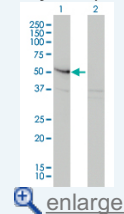
Western Blot (Cell lysate)



Western Blot (Cell lysate)

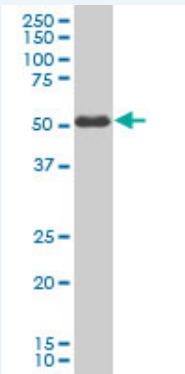


Western Blot (Transfected lysate)



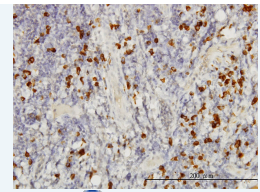
Western Blot (Recombinant protein)


Immunohistochemistry
(Formalin/PFA-fixed paraffin-embedded sections)



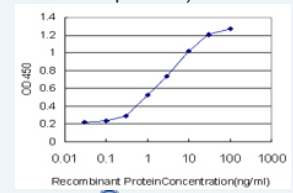
SMAD3 monoclonal antibody (M01), clone 2C12. Western Blot analysis of SMAD3 expression in human colon.


 [Protocol Download](#)



 [enlarge](#)

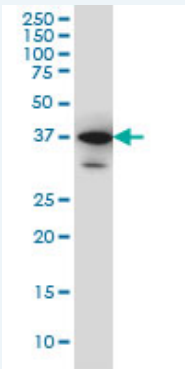
Sandwich ELISA (Recombinant protein)



 [enlarge](#)

ELISA

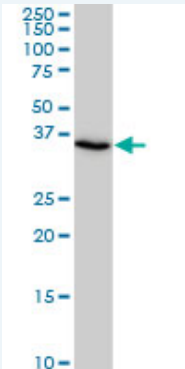
Western Blot (Cell lysate)



SMAD3 monoclonal antibody (M01), clone 2C12. Western Blot analysis of SMAD3 expression in HeLa.

 [Protocol Download](#)

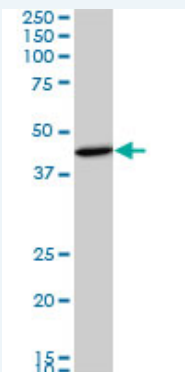
Western Blot (Cell lysate)



SMAD3 monoclonal antibody (M01), clone 2C12. Western Blot analysis of SMAD3 expression in U-2 OS (Cat # L022V1).

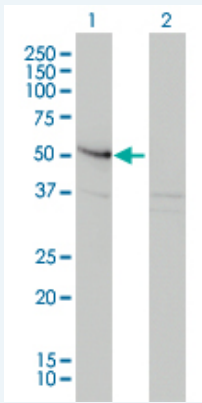
 [Protocol Download](#)

Western Blot (Cell lysate)



SMAD3 monoclonal antibody (M01), clone 2C12. Western Blot analysis of SMAD3 expression in Hs 181.Tes.

Western Blot (Transfected lysate)



Western Blot analysis of SMAD3 expression in transfected 293T cell line by SMAD3 monoclonal antibody (M01), clone 2C12.

Lane 1: SMAD3 transfected lysate(48 KDa).

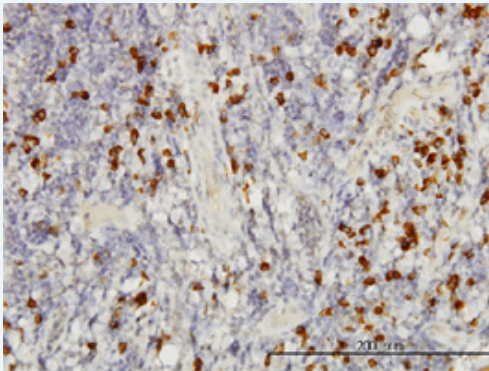
Lane 2: Non-transfected lysate.


 Protocol Download

Western Blot (Recombinant protein)

 Protocol Download

Immunohistochemistry (Formalin/PFA-fixed paraffin-embedded sections)

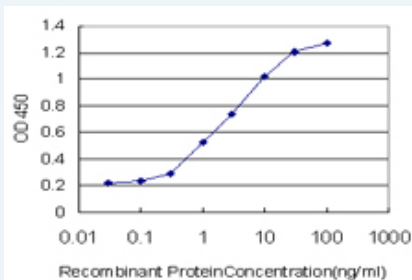


 enlarge this image

Immunoperoxidase of monoclonal antibody to SMAD3 on formalin-fixed paraffin-embedded human tonsil. [antibody concentration 6 ug/ml]

 Protocol Download

Sandwich ELISA (Recombinant protein)



Detection limit for recombinant GST tagged SMAD3 is approximately 0.03ng/ml as a capture antibody.

 Protocol Download

ELISA

Gene Information

Entrez GeneID: [4088](#)

GeneBank [NM_005902](#)

Accession#:

Protein [NP_005893](#)

Accession#:

Gene Name: SMAD3

Gene Alias: DKFZp586N0721,DKFZp686J10186,HSPC193,HsT17436,JV15-2,MADH3,MGC60396

Gene Description: SMAD family member 3

Omim ID: [603109](#)

Gene Ontology: [Hyperlink](#)

Gene Summary: The protein encoded by this gene belongs to the SMAD, a family of proteins similar to the gene products of the Drosophila gene 'mothers against decapentaplegic' (Mad) and the C. elegans gene Sma. SMAD proteins are signal transducers and transcriptional modulators that mediate multiple signaling pathways. This protein functions as a transcriptional modulator activated by transforming growth factor-beta and is thought to play a role in the regulation of carcinogenesis. [provided by RefSeq]

Other Designations: MAD, mothers against decapentaplegic homolog 3,SMA- and MAD-related protein 3,SMAD, mothers against DPP homolog 3,mad homolog JV15-2,mad protein homolog,mothers against decapentaplegic homolog 3

Gene Pathway

[Adherens junction](#) [Cell cycle](#) [Chronic myeloid leukemia](#) [Colorectal cancer](#) [Pancreatic cancer](#) [Pathways in cancer](#) [TGF-beta signaling pathway](#) [Wnt signaling pathway](#)

Related Disease

[Alzheimer Disease](#) [Alzheimer disease](#) [Anemia, Sickle Cell](#) [Anemia, sickle cell](#) [Asthma](#) [Bacteremia](#) [Breast cancer](#) [Breast Neoplasms](#) [Cleft Lip](#) [Cleft Palate](#) [Coronary Artery Disease](#) [Crohn Disease](#) [Diabetes Mellitus, Type 1](#) [Diabetes Mellitus, Type 2](#) [Diabetic Nephropathies](#) [Genetic Predisposition to Disease](#) [Graft vs Host Disease](#) [Head and Neck Neoplasms](#) [Hypersensitivity](#)

... see more

[服務條款](#) | [隱私權政策](#) | [著作及商標](#) | [網站地圖](#)

©2016 亞諾法生技股份有限公司 Abnova Corporation. 版權所有.