



# SZABO SCANDIC

Part of Europa Biosite

## Produktinformation



Forschungsprodukte & Biochemikalien



Zellkultur & Verbrauchsmaterial



Diagnostik & molekulare Diagnostik



Laborgeräte & Service

Weitere Information auf den folgenden Seiten!  
See the following pages for more information!



### Lieferung & Zahlungsart

siehe unsere [Liefer- und Versandbedingungen](#)

### Zuschläge

- Mindermengenzuschlag
- Trockeneiszuschlag
- Gefahrgutzuschlag
- Expressversand

### SZABO-SCANDIC HandelsgmbH

Quellenstraße 110, A-1100 Wien

T. +43(0)1 489 3961-0

F. +43(0)1 489 3961-7

[mail@szabo-scandic.com](mailto:mail@szabo-scandic.com)

[www.szabo-scandic.com](http://www.szabo-scandic.com)

[linkedin.com/company/szaboscandic](https://www.linkedin.com/company/szaboscandic) 



## SMAD3 monoclonal antibody (M04), clone 4G12

Catalog # : H00004088-M04

規格 : [ 100 ug ]

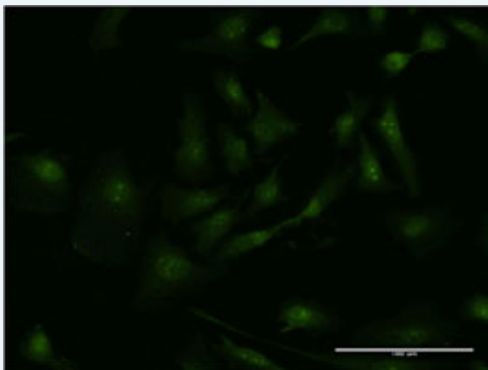
[List All](#)


### Specification

<b>Product Description:</b>	Mouse monoclonal antibody raised against a partial recombinant SMAD3.
<b>Immunogen:</b>	SMAD3 (NP_005893, 1 a.a. ~ 110 a.a) partial recombinant protein with GST tag. MW of the GST tag alone is 26 KDa.
<b>Sequence:</b>	MSSILPFTPPIVKRLLGWKKGEQNGQEEKWCEKAVKSLVKKLKKTGQLD ELEKAITTQNVNTKCITIPRSLDGRLQVSHRKGLPHVIYCRLWRWPDHSH HELAMELCE
<b>Host:</b>	Mouse
<b>Reactivity:</b>	Human
<b>Isotype:</b>	IgG2a Kappa
<b>Quality Control Testing:</b>	Antibody Reactive Against Recombinant Protein.
<b>Storage Buffer:</b>	In 1x PBS, pH 7.4
<b>Storage Instruction:</b>	Store at -20°C or lower. Aliquot to avoid repeated freezing and thawing.
<b>MSDS:</b>	 <a href="#">Download</a>
<b>Datasheet:</b>	 <a href="#">Download</a>

### Applications

#### Immunofluorescence



 [enlarge this image](#)

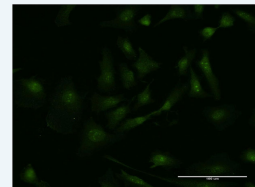
Immunofluorescence of monoclonal antibody to SMAD3 on HeLa cell . [antibody concentration 10 ug/ml]


 [Protocol Download](#)

#### Sandwich ELISA (Recombinant protein)

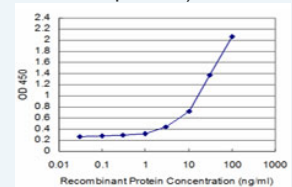
### Application Image


#### Immunofluorescence



 [enlarge](#)

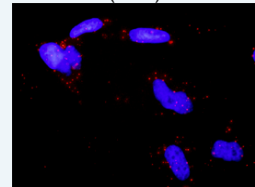
#### Sandwich ELISA (Recombinant protein)



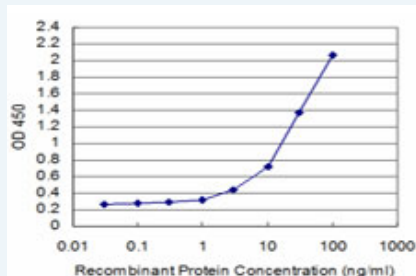
 [enlarge](#)

#### ELISA

#### In situ Proximity Ligation Assay (Cell)



 [enlarge](#)

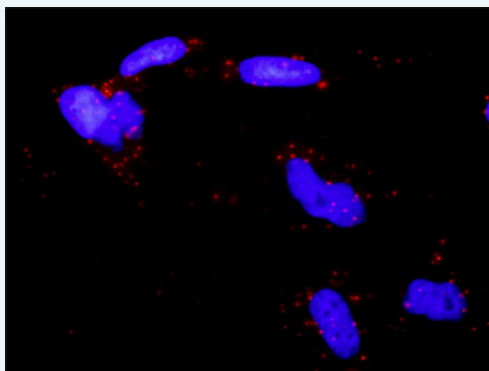


Detection limit for recombinant GST tagged SMAD3 is approximately 1ng/ml as a capture antibody.

Protocol Download

## ELISA

### *In situ* Proximity Ligation Assay (Cell)



Proximity Ligation Analysis of protein-protein interactions between EPAS1 and SMAD3. HeLa cells were stained with anti-EPAS1 rabbit purified polyclonal 1:1200 and anti-SMAD3 mouse monoclonal antibody 1:50. Each red dot represents the detection of protein-protein interaction complex, and nuclei were counterstained with DAPI (blue).

## Gene Information

Entrez GeneID: [4088](#)

GeneBank [NM\\_005902](#)  
Accession#:

Protein [NP\\_005893](#)  
Accession#:

Gene Name: SMAD3

Gene Alias: DKFZp586N0721,DKFZp686J10186,HSPC193,HsT17436,JV15-2,MADH3,MGC60396

Gene Description: SMAD family member 3

Omim ID: [603109](#)

Gene Ontology: [Hyperlink](#)

**Gene Summary:** The protein encoded by this gene belongs to the SMAD, a family of proteins similar to the gene products of the *Drosophila* gene 'mothers against decapentaplegic' (*Mad*) and the *C. elegans* gene *Sma*. SMAD proteins are signal transducers and transcriptional modulators that mediate multiple signaling pathways. This protein functions as a transcriptional modulator activated by transforming growth factor-beta and is thought to play a role in the regulation of carcinogenesis. [provided by RefSeq]

Other MAD, mothers against decapentaplegic homolog 3,SMA- and MAD-

**Designations:** related protein 3, SMAD, mothers against DPP homolog 3, mad homolog  
JV15-2, mad protein homolog, mothers against decapentaplegic homolog  
3

---

### Gene Pathway

[Adherens junction](#) [Cell cycle](#) [Chronic myeloid leukemia](#) [Colorectal cancer](#)  
[Pancreatic cancer](#) [Pathways in cancer](#) [TGF-beta signaling pathway](#) [Wnt signaling pathway](#)

---

### Related Disease

[Alzheimer Disease](#) [Alzheimer disease](#) [Anemia, Sickle Cell](#) [Anemia, sickle cell](#) [Asthma](#)  
[Bacteremia](#) [Breast cancer](#) [Breast Neoplasms](#) [Cleft Lip](#) [Cleft Palate](#)  
[Coronary Artery Disease](#) [Crohn Disease](#) [Diabetes Mellitus, Type 1](#)  
[Diabetes Mellitus, Type 2](#) [Diabetic Nephropathies](#) [Genetic Predisposition to Disease](#)  
[Graft vs Host Disease](#) [Head and Neck Neoplasms](#) [Hypersensitivity](#)

... see more

---

[服務條款](#) | [隱私權政策](#) | [著作及商標](#) | [網站地圖](#)

©2016 亞諾法生技股份有限公司 Abnova Corporation. 版權所有.