



SZABO SCANDIC

Part of Europa Biosite

Produktinformation



Forschungsprodukte & Biochemikalien



Zellkultur & Verbrauchsmaterial



Diagnostik & molekulare Diagnostik



Laborgeräte & Service

Weitere Information auf den folgenden Seiten!
See the following pages for more information!



Lieferung & Zahlungsart

siehe unsere [Liefer- und Versandbedingungen](#)

Zuschläge

- Mindermengenzuschlag
- Trockeneiszuschlag
- Gefahrgutzuschlag
- Expressversand

SZABO-SCANDIC HandelsgmbH

Quellenstraße 110, A-1100 Wien

T. +43(0)1 489 3961-0

F. +43(0)1 489 3961-7

mail@szabo-scandic.com

www.szabo-scandic.com

[linkedin.com/company/szaboscandic](https://www.linkedin.com/company/szaboscandic) 



SMAD3 monoclonal antibody (M05), clone 4D5

Catalog # : H00004088-M05

規格 : [100 ug]

[List All](#)

Specification

Product Description:	Mouse monoclonal antibody raised against a partial recombinant SMAD3.
Immunogen:	SMAD3 (NP_005893, 1 a.a. ~ 110 a.a) partial recombinant protein with GST tag. MW of the GST tag alone is 26 KDa.
Sequence:	MSSILPFTPPIVKRLLGWKKGEQNGQEEKWCEKAVKSLVKKLKKTGQLD ELEKAITTQNVNTKCITIPRSLDGRLQVSHRKGSLPHVIYCRLLWRWPDLSH HELAMELCE
Host:	Mouse
Reactivity:	Human, Rat
Isotype:	IgG2b Kappa
Quality Control Testing:	Antibody Reactive Against Recombinant Protein.
Storage Buffer:	In 1x PBS, pH 7.4
Storage Instruction:	Store at -20°C or lower. Aliquot to avoid repeated freezing and thawing.
MSDS:	 Download
Datasheet:	 Download

Publication Reference

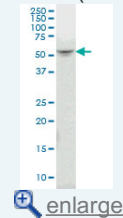
- [Dysregulation of the TGFBI gene is involved in the oncogenic activity of the nonsense mutation of hepatitis B virus surface gene sW182*](#)
Jiang SS, Huang SF, Huang MS, Chen YT, Jhong HJ, Chang IC, Chen YT, Chang JW, Chen WL, Lee WC, Chen MF, Yeh CT, Matsuura I *Biochim Biophys Acta*. 2014 Jul;1842(7):1080-7. doi: 10.1016/j.bbdis.2014.03.007. Epub 2014 Mar 22.
- [Activin A Regulates Porcine Follicle-Stimulating Hormone {beta}-Subunit Transcription via Cooperative Actions of SMADs and FOXL2.](#)
Lamba P, Wang Y, Tran S, Ouspenskaia T, Libasci V, Hebert TE, Miller GJ, Bernard DJ. *Endocrinology*. 2010 Sep 1. [Epub ahead of print]
- [Dual roles of myocardin-related transcription factors in epithelial mesenchymal transition via slug induction and actin remodeling.](#)
Morita T, Mayanagi T, Sobue K. *J Cell Biol*. 2007 Dec 3;179(5):1027-42.

Applications

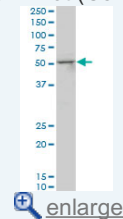
Western Blot (Cell lysate)

Application Image

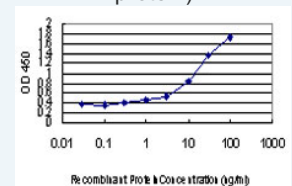
Western Blot (Cell lysate)




Western Blot (Cell lysate)

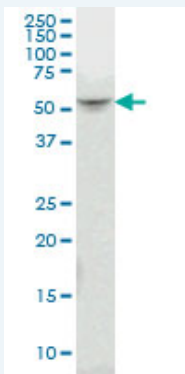


Sandwich ELISA (Recombinant protein)



 [enlarge](#)

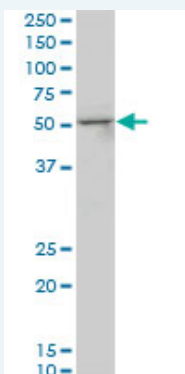
ELISA



SMAD3 monoclonal antibody (M05), clone 4D5 Western Blot analysis of SMAD3 expression in PC-12 (Cat # L012V1).

[Protocol Download](#)

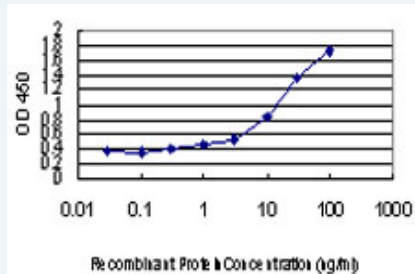
Western Blot (Cell lysate)



SMAD3 monoclonal antibody (M05), clone 4D5. Western Blot analysis of SMAD3 expression in Jurkat (Cat # L017V1).

[Protocol Download](#)

Sandwich ELISA (Recombinant protein)



Detection limit for recombinant GST tagged SMAD3 is approximately 0.3ng/ml as a capture antibody.

[Protocol Download](#)

ELISA

Gene Information

Entrez GeneID: [4088](#)

GeneBank [NM_005902](#)

Accession#:

Protein [NP_005893](#)

Accession#:

Gene Name: SMAD3

Gene Alias: DKFZp586N0721,DKFZp686J10186,HSPC193,HsT17436,JV15-2,MADH3,MGC60396

Gene SMAD family member 3

Description:

Omim ID: [603109](#)

Gene Ontology: [Hyperlink](#)

Gene Summary: The protein encoded by this gene belongs to the SMAD, a family of proteins similar to the gene products of the Drosophila gene 'mothers against decapentaplegic' (Mad) and the C. elegans gene Sma. SMAD proteins are signal transducers and transcriptional modulators that mediate multiple signaling pathways. This protein functions as a transcriptional modulator activated by transforming growth factor-beta and is thought to play a role in the regulation of carcinogenesis. [provided by RefSeq]

Other Designations: MAD, mothers against decapentaplegic homolog 3, SMA- and MAD-related protein 3, SMAD, mothers against DPP homolog 3, mad homolog JV15-2, mad protein homolog, mothers against decapentaplegic homolog 3

Gene Pathway

[Adherens junction](#) [Cell cycle](#) [Chronic myeloid leukemia](#) [Colorectal cancer](#)
[Pancreatic cancer](#) [Pathways in cancer](#) [TGF-beta signaling pathway](#) [Wnt signaling pathway](#)

Related Disease

[Alzheimer Disease](#) [Alzheimer disease](#) [Anemia, Sickle Cell](#) [Anemia, sickle cell](#) [Asthma](#)
[Bacteremia](#) [Breast cancer](#) [Breast Neoplasms](#) [Cleft Lip](#) [Cleft Palate](#)
[Coronary Artery Disease](#) [Crohn Disease](#) [Diabetes Mellitus, Type 1](#)
[Diabetes Mellitus, Type 2](#) [Diabetic Nephropathies](#) [Genetic Predisposition to Disease](#)
[Graft vs Host Disease](#) [Head and Neck Neoplasms](#) [Hypersensitivity](#)

... see more

[服務條款](#) | [隱私權政策](#) | [著作及商標](#) | [網站地圖](#)

©2016 亞諾法生技股份有限公司 Abnova Corporation. 版權所有.