



# SZABO SCANDIC

Part of Europa Biosite

## Produktinformation



Forschungsprodukte & Biochemikalien



Zellkultur & Verbrauchsmaterial



Diagnostik & molekulare Diagnostik



Laborgeräte & Service

Weitere Information auf den folgenden Seiten!  
See the following pages for more information!



### Lieferung & Zahlungsart

siehe unsere [Liefer- und Versandbedingungen](#)

### Zuschläge

- Mindermengenzuschlag
- Trockeneiszuschlag
- Gefahrgutzuschlag
- Expressversand

### SZABO-SCANDIC HandelsgmbH

Quellenstraße 110, A-1100 Wien

T. +43(0)1 489 3961-0

F. +43(0)1 489 3961-7

[mail@szabo-scandic.com](mailto:mail@szabo-scandic.com)

[www.szabo-scandic.com](http://www.szabo-scandic.com)

[linkedin.com/company/szaboscandic](https://www.linkedin.com/company/szaboscandic) 

## SMAD3 monoclonal antibody (M07), clone 1B7

Catalog # : H00004088-M07

規格 : [ 100 ug ]

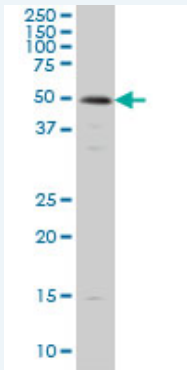
[List All](#)

### Specification

<b>Product Description:</b>	Mouse monoclonal antibody raised against a partial recombinant SMAD3.
<b>Immunogen:</b>	SMAD3 (NP_005893, 1 a.a. ~ 110 a.a) partial recombinant protein with GST tag. MW of the GST tag alone is 26 KDa.
<b>Sequence:</b>	MSSILPFTPPIVKRLLGWKKGEQNGQEEKWCEKAVKSLVKKLKKTGQLD ELEKAITTQNVNTKCITIPRSLDGRLQVSHRKGLPHVIYCRLWRWPDLSH HELAMELCE
<b>Host:</b>	Mouse
<b>Reactivity:</b>	Human, Mouse, Rat
<b>Isotype:</b>	IgG2b Kappa
<b>Quality Control Testing:</b>	Antibody Reactive Against Recombinant Protein.
<b>Storage Buffer:</b>	In 1x PBS, pH 7.4
<b>Storage Instruction:</b>	Store at -20°C or lower. Aliquot to avoid repeated freezing and thawing.
<b>MSDS:</b>	<a href="#">Download</a>
<b>Datasheet:</b>	<a href="#">Download</a>

### Applications

#### Western Blot (Cell lysate)



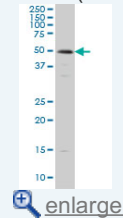
SMAD3 monoclonal antibody (M07), clone 1B7 Western Blot analysis of SMAD3 expression in HeLa ( Cat # L013V1 ).

[Protocol Download](#)

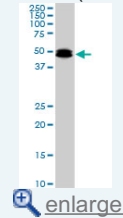
#### Western Blot (Cell lysate)

### Application Image

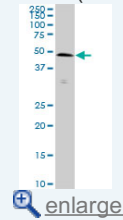
#### Western Blot (Cell lysate)



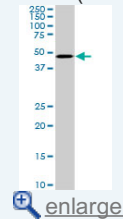
#### Western Blot (Cell lysate)



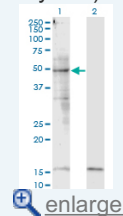
#### Western Blot (Cell lysate)



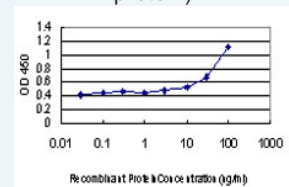
#### Western Blot (Cell lysate)

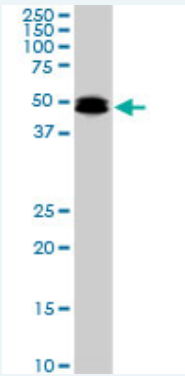


#### Western Blot (Transfected lysate)



#### Sandwich ELISA (Recombinant protein)

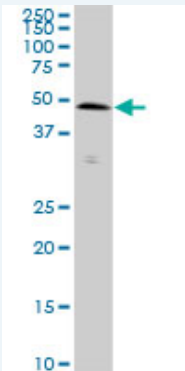




SMAD3 monoclonal antibody (M07), clone 1B7. Western Blot analysis of SMAD3 expression in PC-12 ( Cat # L012V1 ).

 [Protocol Download](#)

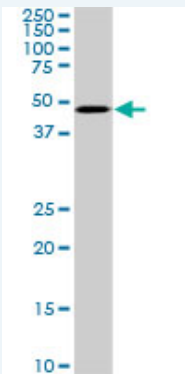
#### Western Blot (Cell lysate)



SMAD3 monoclonal antibody (M07), clone 1B7. Western Blot analysis of SMAD3 expression in Raw 264.7 ( Cat # L024V1 ).

 [Protocol Download](#)

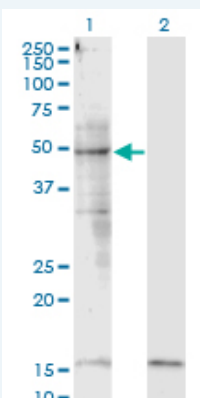
#### Western Blot (Cell lysate)



SMAD3 monoclonal antibody (M07), clone 1B7. Western Blot analysis of SMAD3 expression in NIH/3T3 ( Cat # L018V1 ).

 [Protocol Download](#)

#### Western Blot (Transfected lysate)

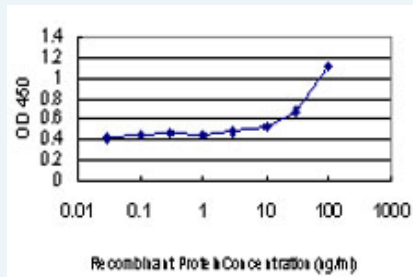


Western Blot analysis of SMAD3 expression in transfected 293T cell line by SMAD3 monoclonal antibody (M07), clone 1B7.

Lane 1: SMAD3 transfected lysate(48 KDa).  
Lane 2: Non-transfected lysate.

 [Protocol Download](#)

### Sandwich ELISA (Recombinant protein)



Detection limit for recombinant GST tagged SMAD3 is approximately 3ng/ml as a capture antibody.

 [Protocol Download](#)

### ELISA

#### Gene Information

**Entrez GeneID:** [4088](#)

**GeneBank Accession#:** [NM\\_005902](#)

**Protein Accession#:** [NP\\_005893](#)

**Gene Name:** SMAD3

**Gene Alias:** DKFZp586N0721,DKFZp686J10186,HSPC193,HsT17436,JV15-2,MADH3,MGC60396

**Gene Description:** SMAD family member 3

**Omim ID:** [603109](#)

**Gene Ontology:** [Hyperlink](#)

**Gene Summary:** The protein encoded by this gene belongs to the SMAD, a family of proteins similar to the gene products of the Drosophila gene 'mothers against decapentaplegic' (Mad) and the C. elegans gene Sma. SMAD proteins are signal transducers and transcriptional modulators that mediate multiple signaling pathways. This protein functions as a transcriptional modulator activated by transforming growth factor-beta and is thought to play a role in the regulation of carcinogenesis. [provided by RefSeq]

**Other Designations:** MAD, mothers against decapentaplegic homolog 3,SMA- and MAD-related protein 3,SMAD, mothers against DPP homolog 3,mad homolog JV15-2,mad protein homolog,mothers against decapentaplegic homolog 3

#### Gene Pathway

[Adherens junction](#) [Cell cycle](#) [Chronic myeloid leukemia](#) [Colorectal cancer](#)  
[Pancreatic cancer](#) [Pathways in cancer](#) [TGF-beta signaling pathway](#) [Wnt signaling pathway](#)

#### Related Disease

[Alzheimer Disease](#) [Alzheimer disease](#) [Anemia, Sickle Cell](#) [Anemia, sickle cell](#) [Asthma](#)  
[Bacteremia](#) [Breast cancer](#) [Breast Neoplasms](#) [Cleft Lip](#) [Cleft Palate](#)

[Coronary Artery Disease](#) [Crohn Disease](#) [Diabetes Mellitus, Type 1](#)  
[Diabetes Mellitus, Type 2](#) [Diabetic Nephropathies](#) [Genetic Predisposition to Disease](#)  
[Graft vs Host Disease](#) [Head and Neck Neoplasms](#) [Hypersensitivity](#)

... see more

---

[服務條款](#) | [隱私權政策](#) | [著作及商標](#) | [網站地圖](#)

©2016 亞諾法生技股份有限公司 Abnova Corporation. 版權所有.