



# SZABO SCANDIC

Part of Europa Biosite

## Produktinformation



Forschungsprodukte & Biochemikalien



Zellkultur & Verbrauchsmaterial



Diagnostik & molekulare Diagnostik



Laborgeräte & Service

Weitere Information auf den folgenden Seiten!  
See the following pages for more information!



### Lieferung & Zahlungsart

siehe unsere [Liefer- und Versandbedingungen](#)

### Zuschläge

- Mindermengenzuschlag
- Trockeneiszuschlag
- Gefahrgutzuschlag
- Expressversand

### SZABO-SCANDIC HandelsgmbH

Quellenstraße 110, A-1100 Wien

T. +43(0)1 489 3961-0

F. +43(0)1 489 3961-7

[mail@szabo-scandic.com](mailto:mail@szabo-scandic.com)

[www.szabo-scandic.com](http://www.szabo-scandic.com)

[linkedin.com/company/szaboscandic](https://www.linkedin.com/company/szaboscandic) 

## SMAD4 polyclonal antibody (A01)

Catalog # : H00004089-A01

規格 : [ 50 uL ]

[List All](#)

### Specification

**Product Description:** Mouse polyclonal antibody raised against a partial recombinant SMAD4.

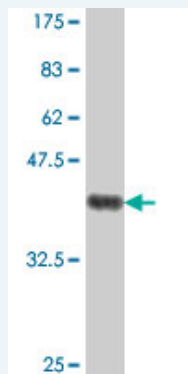
**Immunogen:** SMAD4 (NP\_005350, 56 a.a. ~ 165 a.a) partial recombinant protein with GST tag.

**Sequence:** SLITAITNGAHPKCVTIQRTLDGRLQVAGRKGFPHVIYARLWRWPDHLKNEKHKVYKCYAFDLKDSVCVNPYHYERWVSPGIDL SGLTLQSNAPSSMMVKDEYVHD

**Host:** Mouse

**Reactivity:** Human

**Quality Control Testing:** Antibody Reactive Against Recombinant Protein.



Western Blot detection against Immunogen (38.21 kDa) .

**Storage Buffer:** 50 % glycerol

**Storage Instruction:** Store at -20°C or lower. Aliquot to avoid repeated freezing and thawing.

**MSDS:** [Download](#)

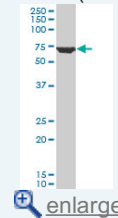
**Datasheet:** [Download](#)

### Applications

Western Blot (Cell lysate)

### Application Image

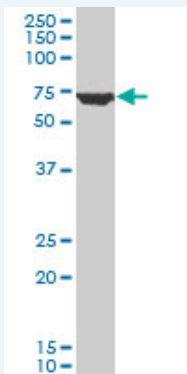
Western Blot (Cell lysate)




[enlarge](#)

Western Blot (Recombinant protein)

ELISA



SMAD4 polyclonal antibody (A01), Lot # 051017JC01 Western Blot analysis of SMAD4 expression in K-562 ( Cat # L009V1 ).

 [Protocol Download](#)

---

**Western Blot (Recombinant protein)**

 [Protocol Download](#)

---

**ELISA**

---

**Gene Information**

**Entrez GeneID:** [4089](#)

**GeneBank** [NM\\_005359](#)

**Accession#:**

**Protein** [NP\\_005350](#)

**Accession#:**

**Gene Name:** SMAD4

**Gene Alias:** DPC4,JIP,MADH4

**Gene** SMAD family member 4

**Description:**

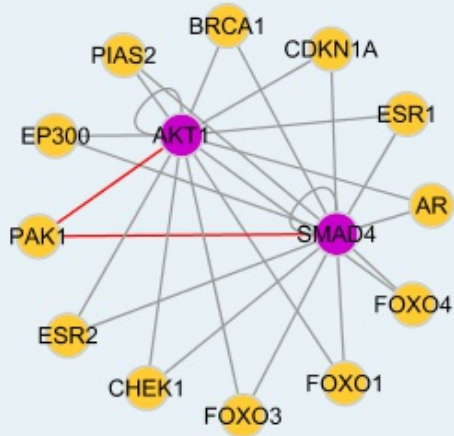
**Omim ID:** [174900](#), [175050](#), [600993](#)

**Gene Ontology:** [Hyperlink](#)

**Other Designations:** MAD, mothers against decapentaplegic homolog 4,OTTHUMP00000163548,SMAD, mothers against DPP homolog 4,deleted in pancreatic carcinoma locus 4,mothers against decapentaplegic homolog 4,mothers against decapentaplegic, Drosophila, homolog of, 4

---

**Interactome**



### Gene Pathway

[Adherens junction](#) [Cell cycle](#) [Chronic myeloid leukemia](#) [Colorectal cancer](#)  
[Pancreatic cancer](#) [Pathways in cancer](#) [TGF-beta signaling pathway](#) [Wnt signaling pathway](#)

### Related Disease

[Adenocarcinoma](#) [Adenomatous Polyposis Coli](#) [Carcinoma, Adenosquamous](#)  
[Carcinoma, Pancreatic Ductal](#) [Carcinoma, Squamous Cell](#) [Cardiovascular Diseases](#)  
[Chromosome Deletion](#) [Cleft Lip](#) [Cleft Palate](#) [Colon cancer](#) [Colonic Neoplasms](#)  
[Colorectal Neoplasms](#) [Diabetes Mellitus, Type 1](#) [Diabetes Mellitus, Type 2](#)  
[Diabetic Nephropathies](#) [Disease Models, Animal](#) [Edema](#) [Gastrointestinal Neoplasms](#)  
[Genetic Predisposition to Disease](#)

... see more

[服務條款](#) | [隱私權政策](#) | [著作及商標](#) | [網站地圖](#)

©2016 亞諾法生技股份有限公司 Abnova Corporation. 版權所有.