



# SZABO SCANDIC

Part of Europa Biosite

## Produktinformation



Forschungsprodukte & Biochemikalien



Zellkultur & Verbrauchsmaterial



Diagnostik & molekulare Diagnostik



Laborgeräte & Service

Weitere Information auf den folgenden Seiten!  
See the following pages for more information!



### Lieferung & Zahlungsart

siehe unsere [Liefer- und Versandbedingungen](#)

### Zuschläge

- Mindermengenzuschlag
- Trockeneiszuschlag
- Gefahrgutzuschlag
- Expressversand

### SZABO-SCANDIC HandelsgmbH

Quellenstraße 110, A-1100 Wien

T. +43(0)1 489 3961-0

F. +43(0)1 489 3961-7

[mail@szabo-scandic.com](mailto:mail@szabo-scandic.com)

[www.szabo-scandic.com](http://www.szabo-scandic.com)

[linkedin.com/company/szaboscandic](https://www.linkedin.com/company/szaboscandic) 

## SMAD4 monoclonal antibody (M01), clone 3B9

Catalog # : H00004089-M01

規格 : [ 100 ug ]

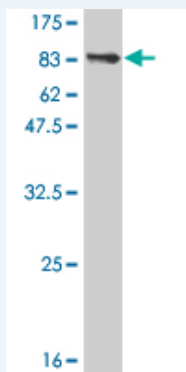
[List All](#)

### Specification

<b>Product Description:</b>	Mouse monoclonal antibody raised against a full length recombinant SMAD4.
<b>Immunogen:</b>	SMAD4 (AAH02379, 1 a.a. ~ 552 a.a) full-length recombinant protein with GST tag. MW of the GST tag alone is 26 KDa.
<b>Sequence:</b>	MDNMSITNTPTSNDACLSIVHSLMCHRQGGSETFAKRAIESLVKKLKEK KDELDSLITAITTSGAHPKCVTIQRTLDGRLQVAGRKGFPHVIYARLWR WPDLHKNELKHVKYCQYAFDLKCDSSVCVNPYHYERVVSPGIDLSGLTLQ SNAPSSMMVKDEYVHDFEGQPSLSTEGHSIQTIQHPPSNRASTETYSTPA LLAPSESNAATSTANFPNIPVASTSQPASILGGSHSEGLLQIASGPQPGQQ QNGFTGQPATYHHNSTTTWTGSRTAPYTPNLPHHQNGHLQHHPMPPH PGHYWPVHNELAFQPPISNHPAPEYWCSIAFYEMDVQVGETFKVPSSCPI VTVDGYVDPSSGGDRFCLGQLSNVHRTEAIERARLHIGKGVQLECKGEG DVWVWVRLSDHAVFVQSYLDREAGRAPGDAVHKIYPSAYIKVFDLRQCH RQMQQQAATAQAAAAAQAQAAVAGNIPGPGSVGGIAPAISLSAAAGIGVD DLRRLCILRMSFVKGWGPDPYPRQSIKETPCWIEIHLHRALQLLDEVLHTM PIADPQPLD
<b>Host:</b>	Mouse
<b>Reactivity:</b>	Human
<b>Isotype:</b>	IgG2a Kappa

**Quality Control** Antibody Reactive Against Recombinant Protein.

**Testing:**



Western Blot detection against Immunogen (86.46 KDa) .

**Storage Buffer:** In 1x PBS, pH 7.4

**Storage Instruction:** Store at -20°C or lower. Aliquot to avoid repeated freezing and thawing.

**MSDS:** [Download](#)

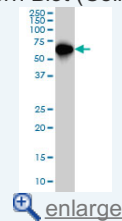
**Datasheet:** [Download](#)

### Applications

Western Blot (Cell lysate)

### Application Image

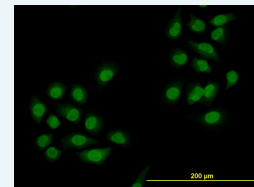
Western Blot (Cell lysate)



[enlarge](#)

Western Blot (Recombinant protein)

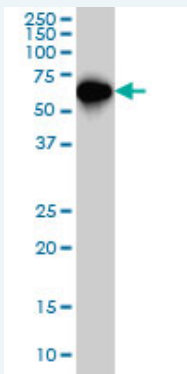
Immunofluorescence



[enlarge](#)

Sandwich ELISA (Recombinant protein)

ELISA



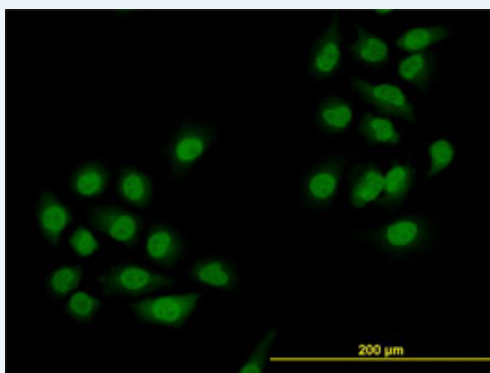
SMAD4 monoclonal antibody (M01), clone 3B9 Western Blot analysis of SMAD4 expression in HeLa S3 NE ( Cat # L013V3 ).

[Protocol Download](#)

#### Western Blot (Recombinant protein)

[Protocol Download](#)

#### Immunofluorescence



[enlarge this image](#)

Immunofluorescence of monoclonal antibody to SMAD4 on HeLa cell. [antibody concentration 10 ug/ml]

[Protocol Download](#)

#### Sandwich ELISA (Recombinant protein)

Detection limit for recombinant GST tagged SMAD4 is approximately 3ng/ml as a capture antibody.

[Protocol Download](#)

#### ELISA

#### Gene Information

Entrez GeneID: [4089](#)

GeneBank [BC002379](#)

Accession#:

Protein [AAH02379](#)

Accession#:

Gene Name: SMAD4

Gene Alias: DPC4,JIP,MADH4

Gene Description: SMAD family member 4

Description:

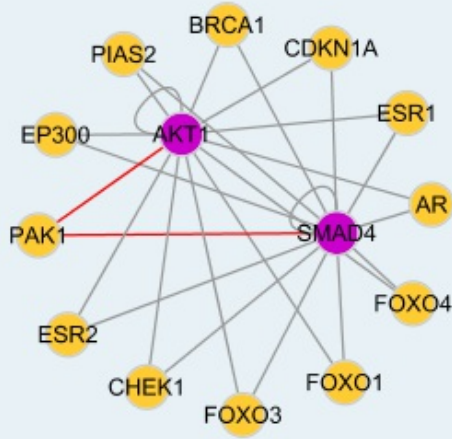
Omim ID: [174900](#), [175050](#), [600993](#)

Gene Ontology: [Hyperlink](#)

Other MAD, mothers against decapentaplegic homolog

**Designations:** 4,OTTHUMP00000163548,SMAD, mothers against DPP homolog 4,deleted in pancreatic carcinoma locus 4,mothers against decapentaplegic homolog 4,mothers against decapentaplegic, Drosophila, homolog of, 4

### Interactome



### Gene Pathway

[Adherens junction](#) [Cell cycle](#) [Chronic myeloid leukemia](#) [Colorectal cancer](#)  
[Pancreatic cancer](#) [Pathways in cancer](#) [TGF-beta signaling pathway](#) [Wnt signaling pathway](#)

### Related Disease

[Adenocarcinoma](#) [Adenomatous Polyposis Coli](#) [Carcinoma, Adenosquamous](#)  
[Carcinoma, Pancreatic Ductal](#) [Carcinoma, Squamous Cell](#) [Cardiovascular Diseases](#)  
[Chromosome Deletion](#) [Cleft Lip](#) [Cleft Palate](#) [Colon cancer](#) [Colonic Neoplasms](#)  
[Colorectal Neoplasms](#) [Diabetes Mellitus, Type 1](#) [Diabetes Mellitus, Type 2](#)  
[Diabetic Nephropathies](#) [Disease Models, Animal](#) [Edema](#) [Gastrointestinal Neoplasms](#)  
[Genetic Predisposition to Disease](#)

... see more

[服務條款](#) | [隱私權政策](#) | [著作及商標](#) | [網站地圖](#)

©2016 亞諾法生技股份有限公司 Abnova Corporation. 版權所有.