



# SZABO SCANDIC

Part of Europa Biosite

## Produktinformation



Forschungsprodukte & Biochemikalien



Zellkultur & Verbrauchsmaterial



Diagnostik & molekulare Diagnostik



Laborgeräte & Service

Weitere Information auf den folgenden Seiten!  
See the following pages for more information!



### Lieferung & Zahlungsart

siehe unsere [Liefer- und Versandbedingungen](#)

### Zuschläge

- Mindermengenzuschlag
- Trockeneiszuschlag
- Gefahrgutzuschlag
- Expressversand

### SZABO-SCANDIC HandelsgmbH

Quellenstraße 110, A-1100 Wien

T. +43(0)1 489 3961-0

F. +43(0)1 489 3961-7

[mail@szabo-scandic.com](mailto:mail@szabo-scandic.com)

[www.szabo-scandic.com](http://www.szabo-scandic.com)

[linkedin.com/company/szaboscandic](https://www.linkedin.com/company/szaboscandic) 

## SMAD4 monoclonal antibody (M02), clone 3E2

Catalog # : H00004089-M02

規格 : [ 100 ug ]

List All

### Specification

**Product Description:** Mouse monoclonal antibody raised against a full length recombinant SMAD4.

**Immunogen:** SMAD4 (AAH02379, 1 a.a. ~ 552 a.a) full-length recombinant protein with GST tag. MW of the GST tag alone is 26 KDa.

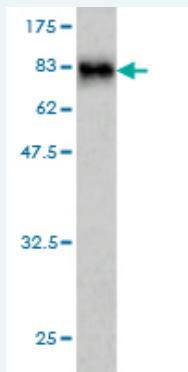
**Sequence:** MDNMSITNTPTSNDACLSIVHSLMCHRQGGSETFAKRAIESLVKKLKEK  
 KDELDLITAITTSGAHPKCVTIQRTLDGRLQVAGRKGFPHVIYARLWR  
 WPDLHKNELKHVKYCQYAFDLKCDSCVNPYHYERVVSPGIDLSGLTLQ  
 SNAPSSMMVKDEYVHDFEGQPSLSTEGHSIQTIQHPPSNRASTETYSTPA  
 LLAPSESNAATSTANFPNIPVASTSQPASILGGSHSEGLLQIASGPQPGQQ  
 QNGFTGQPATYHHNSTTTWTGSRTAPYTPNLPHHQNGHLQHHPMPPH  
 PGHYWPVHNELAFQPPISNHPAPEYWCSIAFYEMDVQVGETFKVPSSCPI  
 VTVDGVDPSGGDRFCLGQLSNVHRTEAIERARLHIGKGVQLECKGEG  
 DVWVRLSDHAVFVQSYLDREAGRAPGDAVHKIYPSAYIKVFDLRQCH  
 RQMQQQAATAQAAAAAQAQAVAGNIPGPGSVGGIAPAISLSAAAGIGVD  
 DLRRLLCILRMSFVKGWGPDPYPRQSIKETPCWIEIHLHRALQLLDEVLHTM  
 PIADPQPLD

**Host:** Mouse

**Reactivity:** Human

**Isotype:** IgG2a Kappa

**Quality Control Testing:** Antibody Reactive Against Recombinant Protein.



Western Blot detection against Immunogen (86.46 KDa) .

**Storage Buffer:** In 1x PBS, pH 7.4

**Storage Instruction:** Store at -20°C or lower. Aliquot to avoid repeated freezing and thawing.

**MSDS:** [Download](#)

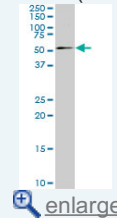
**Datasheet:** [Download](#)

### Applications

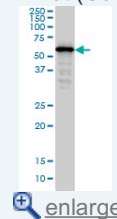
Western Blot (Cell lysate)

### Application Image

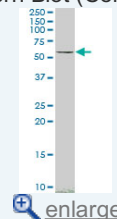
Western Blot (Cell lysate)



Western Blot (Cell lysate)

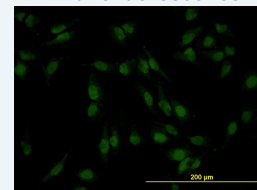


Western Blot (Cell lysate)

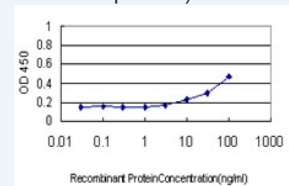


Western Blot (Recombinant protein)

Immunofluorescence

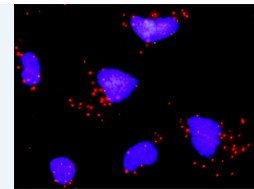
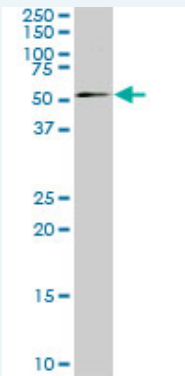


Sandwich ELISA (Recombinant protein)



ELISA

In situ Proximity Ligation Assay (Cell)

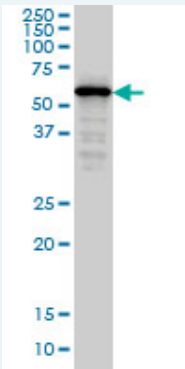


[enlarge](#)

SMAD4 monoclonal antibody (M02), clone 3E2. Western Blot analysis of SMAD4 expression in IMR-32 ( Cat # L008V1 ).

[Protocol Download](#)

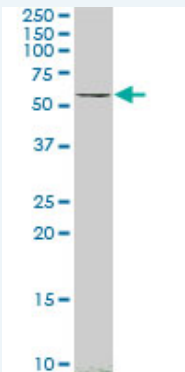
#### Western Blot (Cell lysate)



SMAD4 monoclonal antibody (M02), clone 3E2 Western Blot analysis of SMAD4 expression in HeLa S3 NE ( Cat # L013V3 ).

[Protocol Download](#)

#### Western Blot (Cell lysate)



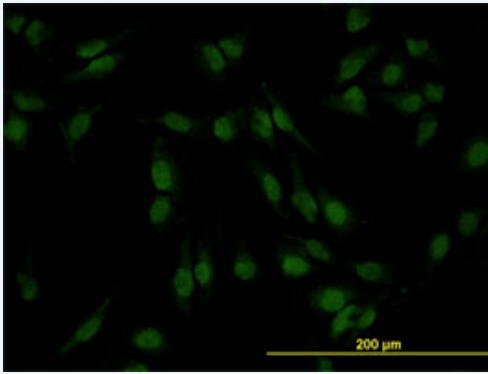
SMAD4 monoclonal antibody (M02), clone 3E2. Western Blot analysis of SMAD4 expression in K-562 ( Cat # L009V1 ).

[Protocol Download](#)

#### Western Blot (Recombinant protein)

[Protocol Download](#)

#### Immunofluorescence

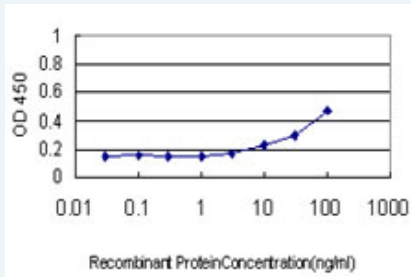


[enlarge this image](#)

Immunofluorescence of monoclonal antibody to SMAD4 on HeLa cell. [antibody concentration 10 ug/ml]

[Protocol Download](#)

### Sandwich ELISA (Recombinant protein)

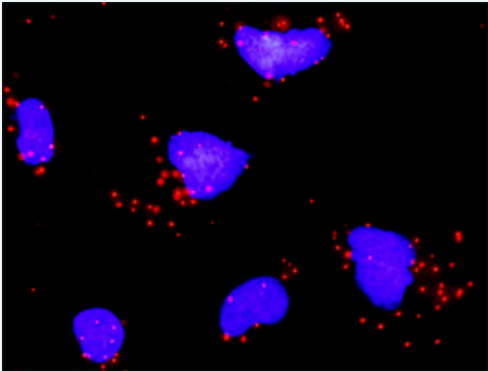


Detection limit for recombinant GST tagged SMAD4 is approximately 3ng/ml as a capture antibody.

[Protocol Download](#)

### ELISA

### *In situ* Proximity Ligation Assay (Cell)



Proximity Ligation Analysis of protein-protein interactions between CDKN1A and SMAD4. HeLa cells were stained with anti-CDKN1A rabbit purified polyclonal 1:1200 and anti-SMAD4 mouse monoclonal antibody 1:50. Each red dot represents the detection of protein-protein interaction complex, and nuclei were counterstained with DAPI (blue).

### Gene Information

Entrez GeneID: [4089](#)

GeneBank [BC002379](#)  
Accession#:

Protein [AAH02379](#)  
Accession#:

Gene Name: SMAD4

Gene Alias: DPC4,JIP,MADH4

Gene SMAD family member 4

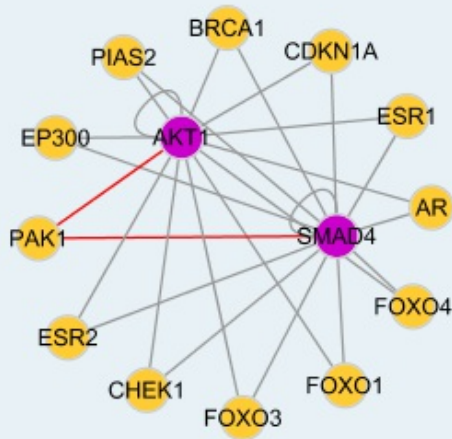
## Description:

**Omim ID:** [174900](#), [175050](#), [600993](#)

**Gene Ontology:** [Hyperlink](#)

**Other Designations:** MAD, mothers against decapentaplegic homolog 4, OTTHUMP00000163548, SMAD, mothers against DPP homolog 4, deleted in pancreatic carcinoma locus 4, mothers against decapentaplegic homolog 4, mothers against decapentaplegic, Drosophila, homolog of, 4

## Interactome



## Gene Pathway

[Adherens junction](#) [Cell cycle](#) [Chronic myeloid leukemia](#) [Colorectal cancer](#)  
[Pancreatic cancer](#) [Pathways in cancer](#) [TGF-beta signaling pathway](#) [Wnt signaling pathway](#)

## Related Disease

[Adenocarcinoma](#) [Adenomatous Polyposis Coli](#) [Carcinoma, Adenosquamous](#)  
[Carcinoma, Pancreatic Ductal](#) [Carcinoma, Squamous Cell](#) [Cardiovascular Diseases](#)  
[Chromosome Deletion](#) [Cleft Lip](#) [Cleft Palate](#) [Colon cancer](#) [Colonic Neoplasms](#)  
[Colorectal Neoplasms](#) [Diabetes Mellitus, Type 1](#) [Diabetes Mellitus, Type 2](#)  
[Diabetic Nephropathies](#) [Disease Models, Animal](#) [Edema](#) [Gastrointestinal Neoplasms](#)  
[Genetic Predisposition to Disease](#)

... see more

[服務條款](#) | [隱私權政策](#) | [著作及商標](#) | [網站地圖](#)

©2016 亞諾法生技股份有限公司 Abnova Corporation. 版權所有.