



# SZABO SCANDIC

Part of Europa Biosite

## Produktinformation



Forschungsprodukte & Biochemikalien



Zellkultur & Verbrauchsmaterial



Diagnostik & molekulare Diagnostik



Laborgeräte & Service

Weitere Information auf den folgenden Seiten!  
See the following pages for more information!



### Lieferung & Zahlungsart

siehe unsere [Liefer- und Versandbedingungen](#)

### Zuschläge

- Mindermengenzuschlag
- Trockeneiszuschlag
- Gefahrgutzuschlag
- Expressversand

### SZABO-SCANDIC HandelsgmbH

Quellenstraße 110, A-1100 Wien

T. +43(0)1 489 3961-0

F. +43(0)1 489 3961-7

[mail@szabo-scandic.com](mailto:mail@szabo-scandic.com)

[www.szabo-scandic.com](http://www.szabo-scandic.com)

[linkedin.com/company/szaboscandic](https://www.linkedin.com/company/szaboscandic) 

## SMAD4 monoclonal antibody (M03), clone 1A5

Catalog # : H00004089-M03

規格 : [ 100 ug ]

List All

### Specification

**Product Description:** Mouse monoclonal antibody raised against a partial recombinant SMAD4.

**Immunogen:** SMAD4 (NP\_005350, 56 a.a. ~ 165 a.a) partial recombinant protein with GST tag. MW of the GST tag alone is 26 KDa.

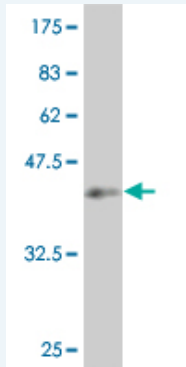
**Sequence:** SLITAITNGAHPSKCVTIQRTLDGRLQVAGRKGFPHVIYARLWRWPDH  
KNELKHVKYCQYAFDLKDSVCVNPYHYERWVSPGIDL SGLTLQSNAPSS  
MMVKDEYVHD

**Host:** Mouse

**Reactivity:** Human

**Isotype:** IgG2a Kappa

**Quality Control Testing:** Antibody Reactive Against Recombinant Protein.



Western Blot detection against Immunogen (37.84 KDa) .

**Storage Buffer:** In 1x PBS, pH 7.4

**Storage Instruction:** Store at -20°C or lower. Aliquot to avoid repeated freezing and thawing.

**MSDS:** [Download](#)

**Datasheet:** [Download](#)

### Applications

Western Blot (Recombinant protein)

[Protocol Download](#)

ELISA

### Gene Information

**Entrez GeneID:** [4089](#)

### Application Image

Western Blot (Recombinant protein)

ELISA

**GeneBank** [NM\\_005359](#)

**Accession#:**

**Protein** [NP\\_005350](#)

**Accession#:**

**Gene Name:** SMAD4

**Gene Alias:** DPC4,JIP,MADH4

**Gene** SMAD family member 4

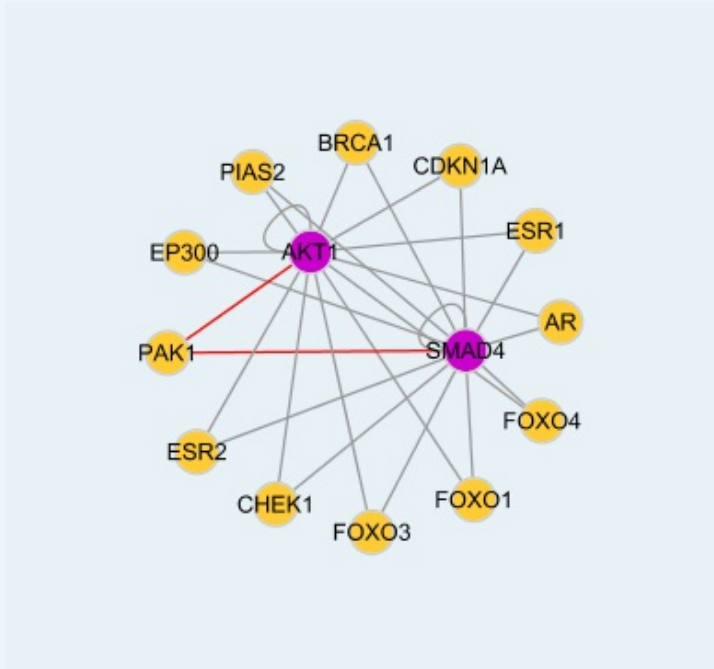
**Description:**

**Omim ID:** [174900](#), [175050](#), [600993](#)

**Gene Ontology:** [Hyperlink](#)

**Other Designations:** MAD, mothers against decapentaplegic homolog 4,OTTHUMP00000163548,SMAD, mothers against DPP homolog 4,deleted in pancreatic carcinoma locus 4,mothers against decapentaplegic homolog 4,mothers against decapentaplegic, Drosophila, homolog of, 4

## Interactome



## Gene Pathway

[Adherens junction](#) [Cell cycle](#) [Chronic myeloid leukemia](#) [Colorectal cancer](#)  
[Pancreatic cancer](#) [Pathways in cancer](#) [TGF-beta signaling pathway](#) [Wnt signaling pathway](#)

## Related Disease

[Adenocarcinoma](#) [Adenomatous Polyposis Coli](#) [Carcinoma, Adenosquamous](#)  
[Carcinoma, Pancreatic Ductal](#) [Carcinoma, Squamous Cell](#) [Cardiovascular Diseases](#)  
[Chromosome Deletion](#) [Cleft Lip](#) [Cleft Palate](#) [Colon cancer](#) [Colonic Neoplasms](#)  
[Colorectal Neoplasms](#) [Diabetes Mellitus, Type 1](#) [Diabetes Mellitus, Type 2](#)  
[Diabetic Nephropathies](#) [Disease Models, Animal](#) [Edema](#) [Gastrointestinal Neoplasms](#)  
[Genetic Predisposition to Disease](#)

... see more

