



SZABO SCANDIC

Part of Europa Biosite

Produktinformation



Forschungsprodukte & Biochemikalien



Zellkultur & Verbrauchsmaterial



Diagnostik & molekulare Diagnostik



Laborgeräte & Service

Weitere Information auf den folgenden Seiten!
See the following pages for more information!



Lieferung & Zahlungsart

siehe unsere [Liefer- und Versandbedingungen](#)

Zuschläge

- Mindermengenzuschlag
- Trockeneiszuschlag
- Gefahrgutzuschlag
- Expressversand

SZABO-SCANDIC HandelsgmbH

Quellenstraße 110, A-1100 Wien

T. +43(0)1 489 3961-0

F. +43(0)1 489 3961-7

mail@szabo-scandic.com

www.szabo-scandic.com

[linkedin.com/company/szaboscandic](https://www.linkedin.com/company/szaboscandic) 

SMAD4 monoclonal antibody (M09), clone 3D7

Catalog # : H00004089-M09

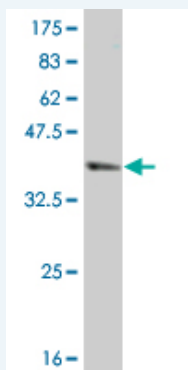
規格 : [100 ug]

[List All](#)

Specification

Product Description:	Mouse monoclonal antibody raised against a partial recombinant SMAD4.
Immunogen:	SMAD4 (NP_005350, 56 a.a. ~ 165 a.a) partial recombinant protein with GST tag. MW of the GST tag alone is 26 KDa.
Sequence:	SLITAITNGAHPKCVTIQRTLDGRLQVAGRKGFPHVIYARLWRWPDHLKNEKLVKVCQYAFDLKCDVSVNPNYHYERWVSPGIDL SGLTLQSNAPSSMMVKDEYVHD
Host:	Mouse
Reactivity:	Human
Isotype:	IgG2a Kappa

Quality Control Testing: Antibody Reactive Against Recombinant Protein.



Western Blot detection against Immunogen (37.84 KDa) .

Storage Buffer: In 1x PBS, pH 7.4

Storage Instruction: Store at -20°C or lower. Aliquot to avoid repeated freezing and thawing.

MSDS: [Download](#)

Datasheet: [Download](#)

Applications

Western Blot (Recombinant protein)

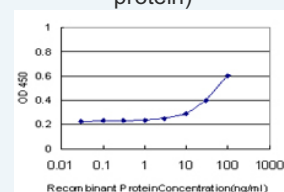
[Protocol Download](#)

Sandwich ELISA (Recombinant protein)

Application Image

Western Blot (Recombinant protein)

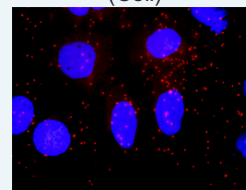
Sandwich ELISA (Recombinant protein)



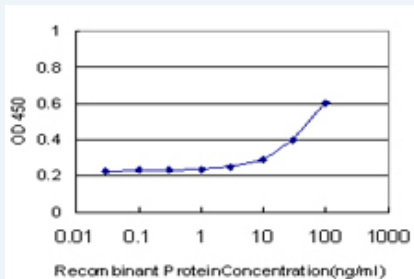
[enlarge](#)

ELISA

In situ Proximity Ligation Assay (Cell)



[enlarge](#)

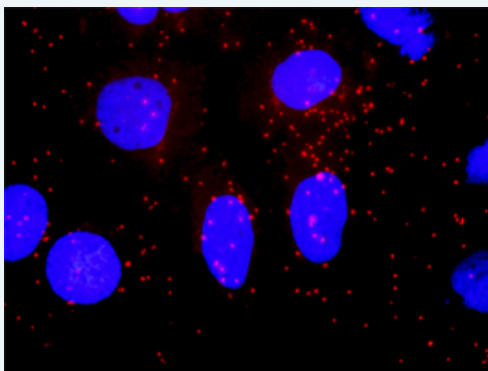


Detection limit for recombinant GST tagged SMAD4 is approximately 3ng/ml as a capture antibody.

 [Protocol Download](#)

ELISA

In situ Proximity Ligation Assay (Cell)



Proximity Ligation Analysis of protein-protein interactions between AKT1 and SMAD4. Huh7 cells were stained with anti-AKT1 rabbit purified polyclonal 1:1200 and anti-SMAD4 mouse monoclonal antibody 1:50. Each red dot represents the detection of protein-protein interaction complex, and nuclei were counterstained with DAPI (blue).

Gene Information

Entrez GeneID: [4089](#)

GeneBank Accession#: [NM_005359](#)

Protein Accession#: [NP_005350](#)

Gene Name: SMAD4

Gene Alias: DPC4, JIP, MADH4

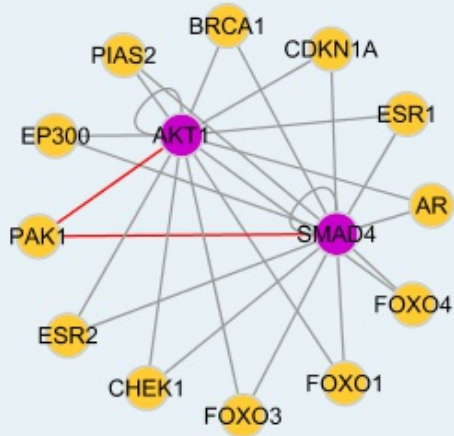
Gene Description: SMAD family member 4

Omim ID: [174900](#), [175050](#), [600993](#)

Gene Ontology: [Hyperlink](#)

Other Designations: MAD, mothers against decapentaplegic homolog 4, OTTHUMP00000163548, SMAD, mothers against DPP homolog 4, deleted in pancreatic carcinoma locus 4, mothers against decapentaplegic homolog 4, mothers against decapentaplegic, Drosophila, homolog of, 4

Interactome



Gene Pathway

[Adherens junction](#) [Cell cycle](#) [Chronic myeloid leukemia](#) [Colorectal cancer](#)
[Pancreatic cancer](#) [Pathways in cancer](#) [TGF-beta signaling pathway](#) [Wnt signaling pathway](#)

Related Disease

[Adenocarcinoma](#) [Adenomatous Polyposis Coli](#) [Carcinoma, Adenosquamous](#)
[Carcinoma, Pancreatic Ductal](#) [Carcinoma, Squamous Cell](#) [Cardiovascular Diseases](#)
[Chromosome Deletion](#) [Cleft Lip](#) [Cleft Palate](#) [Colon cancer](#) [Colonic Neoplasms](#)
[Colorectal Neoplasms](#) [Diabetes Mellitus, Type 1](#) [Diabetes Mellitus, Type 2](#)
[Diabetic Nephropathies](#) [Disease Models, Animal](#) [Edema](#) [Gastrointestinal Neoplasms](#)
[Genetic Predisposition to Disease](#)

... see more

[服務條款](#) | [隱私權政策](#) | [著作及商標](#) | [網站地圖](#)

©2016 亞諾法生技股份有限公司 Abnova Corporation. 版權所有.