



# SZABO SCANDIC

Part of Europa Biosite

## Produktinformation



Forschungsprodukte & Biochemikalien



Zellkultur & Verbrauchsmaterial



Diagnostik & molekulare Diagnostik



Laborgeräte & Service

Weitere Information auf den folgenden Seiten!  
See the following pages for more information!



### Lieferung & Zahlungsart

siehe unsere [Liefer- und Versandbedingungen](#)

### Zuschläge

- Mindermengenzuschlag
- Trockeneiszuschlag
- Gefahrgutzuschlag
- Expressversand

### SZABO-SCANDIC HandelsgmbH

Quellenstraße 110, A-1100 Wien

T. +43(0)1 489 3961-0

F. +43(0)1 489 3961-7

[mail@szabo-scandic.com](mailto:mail@szabo-scandic.com)

[www.szabo-scandic.com](http://www.szabo-scandic.com)

[linkedin.com/company/szaboscandic](https://www.linkedin.com/company/szaboscandic) 

# SMAD6 purified MaxPab rabbit polyclonal antibody (D01P) MaxPab®

Catalog # : H00004091-D01P

規格 : [ 100 ug ]

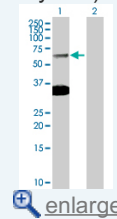
[List All](#)

## Specification

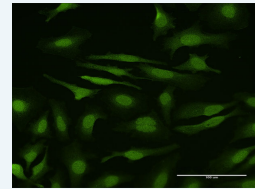
<b>Product Description:</b>	Rabbit polyclonal antibody raised against a full-length human SMAD6 protein.
<b>Immunogen:</b>	SMAD6 (NP_005576.3, 1 a.a. ~ 496 a.a) full-length human protein.
<b>Sequence:</b>	MFRSKRSGLVRRLLWRSRVVPDREEGSGGGGGGGDEGSLGSRAEPA PRAREGGGCGRSEVRPVAPRRPRDAVGQRGAQGAGRRRRAGGPPRP MSEPGAGAGSSLLDVAEPGGPGWLPESDCETVTCCLFSEDAAGAPR DASDPLAGAALPAGGGRSREARSRLLLLEQLKTVTYSLKRLKERSL DTLLEAVESRGGVPGGCVLVPADLRLGGQPAPPQLLLGRLFRWPD QHAVELKPLCGCHSFAAADGPTVCCNPYHF SRLCGPESPPPPYSRLSP RDEYKPLDLDSTLSYETEATNSLITAPGEFSDASMSPDATKPSHWCS VAYWEHRTRVGRLYAVYDQAVSIFYDLPQGGSGFCLGQLNLEQRSESVR RTRSKIGFGILLSKEPDGWAYNRGEHPIFVNSPTLDAPGGRALWRKVP PGYSIKVDFERSGLQHAPEPDAADGPYPNSVRISFAKGGWGPCYSRQF ITSCPCWLEILLNNPR
<b>Host:</b>	Rabbit
<b>Reactivity:</b>	Human
<b>Quality Control Testing:</b>	Antibody reactive against mammalian transfected lysate.
<b>Storage Buffer:</b>	In 1x PBS, pH 7.4
<b>Storage Instruction:</b>	Store at -20°C or lower. Aliquot to avoid repeated freezing and thawing.
<b>MSDS:</b>	<a href="#">Download</a>
<b>Datasheet:</b>	<a href="#">Download</a>

## Application Image

Western Blot (Transfected lysate)

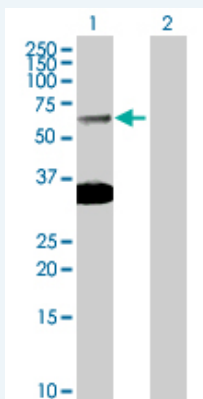


Immunofluorescence



## Applications

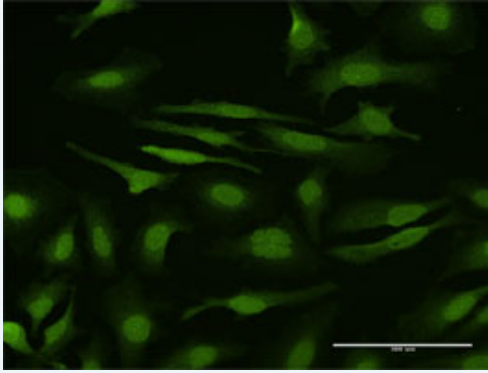
### Western Blot (Transfected lysate)




Western Blot analysis of SMAD6 expression in transfected 293T cell line (H00004091-T02) by SMAD6 MaxPab polyclonal antibody.

Lane 1: SMAD6 transfected lysate(53.50 KDa).

### Immunofluorescence



 [enlarge this image](#)

Immunofluorescence of purified MaxPab antibody to SMAD6 on HeLa cell. [antibody concentration 10 ug/ml]

### Gene Information

Entrez GeneID: [4091](#)

GeneBank Accession#: [NM\\_005585.3](#)

Protein Accession#: [NP\\_005576.3](#)

Gene Name: SMAD6

Gene Alias: HsT17432,MADH6,MADH7

Gene Description: SMAD family member 6

Omim ID: [602931](#)

Gene Ontology: [Hyperlink](#)

**Gene Summary:** The protein encoded by this gene belongs to the SMAD family of proteins, which are related to Drosophila 'mothers against decapentaplegic' (Mad) and C. elegans Sma. SMAD proteins are signal transducers and transcriptional modulators that mediate multiple signaling pathways. This protein functions in the negative regulation of BMP and TGF-beta/activin-signalling. Multiple transcript variants encoding different isoforms have been found for this gene

**Other Designations:** MAD (mothers against decapentaplegic, Drosophila) homolog 6,MAD, mothers against decapentaplegic homolog 6,Mothers against decapentaplegic, drosophila, homolog of, 6,SMAD, mothers against DPP homolog 6

### Gene Pathway

[TGF-beta signaling pathway](#)

### Related Disease

[Anemia](#), [Sickle Cell Anemia](#), [sickle cell Bacteremia](#) [Colorectal Neoplasms](#)  
[Diabetes Mellitus, Type 2](#) [Genetic Predisposition to Disease](#) [Hypertension](#), [Pulmonary Keloid](#) [Obesity](#) [Ovarian Failure](#), [Premature Polycystic Ovary Syndrome](#) [Puberty](#), [Delayed Puberty](#), [Precocious](#) [Thrombophilia](#) [Tobacco Use Disorder](#)

