



# SZABO SCANDIC

Part of Europa Biosite

## Produktinformation



Forschungsprodukte & Biochemikalien



Zellkultur & Verbrauchsmaterial



Diagnostik & molekulare Diagnostik



Laborgeräte & Service

Weitere Information auf den folgenden Seiten!  
See the following pages for more information!



### Lieferung & Zahlungsart

siehe unsere [Liefer- und Versandbedingungen](#)

### Zuschläge

- Mindermengenzuschlag
- Trockeneiszuschlag
- Gefahrgutzuschlag
- Expressversand

### SZABO-SCANDIC HandelsgmbH

Quellenstraße 110, A-1100 Wien

T. +43(0)1 489 3961-0

F. +43(0)1 489 3961-7

[mail@szabo-scandic.com](mailto:mail@szabo-scandic.com)

[www.szabo-scandic.com](http://www.szabo-scandic.com)

[linkedin.com/company/szaboscandic](https://www.linkedin.com/company/szaboscandic)

## SMAD6 monoclonal antibody (M02), clone 4F3

Catalog # : H00004091-M02

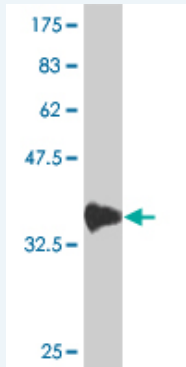
規格 : [ 100 ug ]

[List All](#)

### Specification

<b>Product Description:</b>	Mouse monoclonal antibody raised against a partial recombinant SMAD6.
<b>Immunogen:</b>	SMAD6 (NP_005576, 285 a.a. ~ 384 a.a) partial recombinant protein with GST tag. MW of the GST tag alone is 26 KDa.
<b>Sequence:</b>	RDEYKPLDLSSTLSYTETEATNSLITAPGEFSDASMSPDATKPSHWCS VAYWEHRTRVGRLYAVYDQAVSIFYDLPGSGFCLGQLNLEQRSESVR RTR
<b>Host:</b>	Mouse
<b>Reactivity:</b>	Human
<b>Isotype:</b>	IgG2b Kappa

**Quality Control Testing:** Antibody Reactive Against Recombinant Protein.



Western Blot detection against Immunogen (36.74 KDa) .

**Storage Buffer:** In 1x PBS, pH 7.4

**Storage Instruction:** Store at -20°C or lower. Aliquot to avoid repeated freezing and thawing.

**MSDS:** [Download](#)

**Datasheet:** [Download](#)

### Applications

**Western Blot (Recombinant protein)**

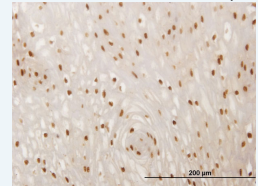
[Protocol Download](#)

**Immunohistochemistry (Formalin/PFA-fixed paraffin-embedded sections)**

### Application Image

Western Blot (Recombinant protein)

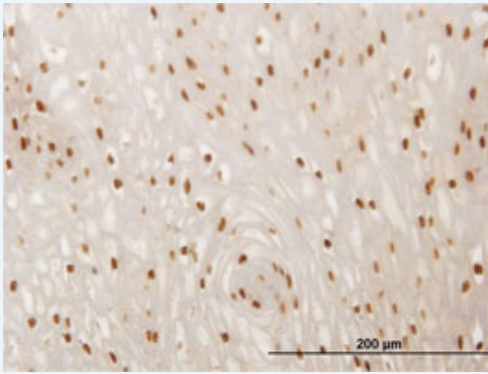
Immunohistochemistry (Formalin/PFA-fixed paraffin-embedded sections)



[enlarge](#)

Sandwich ELISA (Recombinant protein)

ELISA



[enlarge this image](#)

Immunoperoxidase of monoclonal antibody to SMAD6 on formalin-fixed paraffin-embedded human esophagus. [antibody concentration 3 ug/ml]

[Protocol Download](#)

### Sandwich ELISA (Recombinant protein)

Detection limit for recombinant GST tagged SMAD6 is approximately 10ng/ml as a capture antibody.

[Protocol Download](#)

### ELISA

### Gene Information

Entrez GeneID: [4091](#)

GeneBank Accession#: [NM\\_005585](#)

Protein Accession#: [NP\\_005576](#)

Gene Name: SMAD6

Gene Alias: HsT17432,MADH6,MADH7

Gene Description: SMAD family member 6

Omim ID: [602931](#)

Gene Ontology: [Hyperlink](#)

**Gene Summary:** The protein encoded by this gene belongs to the SMAD family of proteins, which are related to Drosophila 'mothers against decapentaplegic' (Mad) and C. elegans Sma. SMAD proteins are signal transducers and transcriptional modulators that mediate multiple signaling pathways. This protein functions in the negative regulation of BMP and TGF-beta/activin-signalling. Multiple transcript variants encoding different isoforms have been found for this gene

**Other Designations:** MAD (mothers against decapentaplegic, Drosophila) homolog 6,MAD, mothers against decapentaplegic homolog 6,Mothers against decapentaplegic, drosophila, homolog of, 6,SMAD, mothers against DPP homolog 6

### Gene Pathway

[TGF-beta signaling pathway](#)

### Related Disease

[Anemia](#), [Sickle Cell Anemia](#), [sickle cell Bacteremia](#) [Colorectal Neoplasms](#) [Diabetes Mellitus, Type 2](#) [Genetic Predisposition to Disease](#) [Hypertension](#), [Pulmonary Keloid](#) [Obesity](#) [Ovarian Failure](#), [Premature Polycystic Ovary Syndrome](#) [Puberty](#), [Delayed](#)

---

[服務條款](#) | [隱私權政策](#) | [著作及商標](#) | [網站地圖](#)

©2016 亞諾法生技股份有限公司 Abnova Corporation. 版權所有.