



# SZABO SCANDIC

Part of Europa Biosite

## Produktinformation



Forschungsprodukte & Biochemikalien



Zellkultur & Verbrauchsmaterial



Diagnostik & molekulare Diagnostik



Laborgeräte & Service

Weitere Information auf den folgenden Seiten!  
See the following pages for more information!



### Lieferung & Zahlungsart

siehe unsere [Liefer- und Versandbedingungen](#)

### Zuschläge

- Mindermengenzuschlag
- Trockeneiszuschlag
- Gefahrgutzuschlag
- Expressversand

### SZABO-SCANDIC HandelsgmbH

Quellenstraße 110, A-1100 Wien

T. +43(0)1 489 3961-0

F. +43(0)1 489 3961-7

[mail@szabo-scandic.com](mailto:mail@szabo-scandic.com)

[www.szabo-scandic.com](http://www.szabo-scandic.com)

[linkedin.com/company/szaboscandic](https://www.linkedin.com/company/szaboscandic) 

## SMAD6 monoclonal antibody (M04), clone 4F8

Catalog # : H00004091-M04

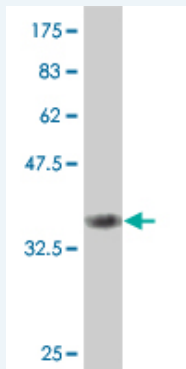
規格 : [ 100 ug ]

List All

### Specification

<b>Product Description:</b>	Mouse monoclonal antibody raised against a partial recombinant SMAD6.
<b>Immunogen:</b>	SMAD6 (NP_005576, 285 a.a. ~ 384 a.a) partial recombinant protein with GST tag. MW of the GST tag alone is 26 KDa.
<b>Sequence:</b>	RDEYKPLDLS DSTLSYTETEATNSLITAPGEFSDASMSPDATKPSHWCS VAYWEHRTRVGRLYAVYDQAVSIFYDLPQGSGFCLGQLNLEQRSESVR RTR
<b>Host:</b>	Mouse
<b>Reactivity:</b>	Human
<b>Isotype:</b>	IgG2a Kappa

**Quality Control Testing:** Antibody Reactive Against Recombinant Protein.



Western Blot detection against Immunogen (36.74 KDa) .

**Storage Buffer:** In 1x PBS, pH 7.4

**Storage Instruction:** Store at -20°C or lower. Aliquot to avoid repeated freezing and thawing.

**MSDS:** [Download](#)

**Datasheet:** [Download](#)

### Applications

**Western Blot (Recombinant protein)**

[Protocol Download](#)

**Sandwich ELISA (Recombinant protein)**

Detection limit for recombinant GST tagged SMAD6 is approximately 10ng/ml as a capture antibody.

[Protocol Download](#)

**ELISA**

### Application Image

Western Blot (Recombinant protein)

Sandwich ELISA (Recombinant protein)

ELISA

## Gene Information

---

**Entrez GeneID:** [4091](#)

---

**GeneBank  
Accession#:** [NM\\_005585](#)

---

**Protein  
Accession#:** [NP\\_005576](#)

---

**Gene Name:** SMAD6

---

**Gene Alias:** HsT17432,MADH6,MADH7

---

**Gene  
Description:** SMAD family member 6

---

**Omim ID:** [602931](#)

---

**Gene Ontology:** [Hyperlink](#)

---

**Gene Summary:** The protein encoded by this gene belongs to the SMAD family of proteins, which are related to Drosophila 'mothers against decapentaplegic' (Mad) and C. elegans Sma. SMAD proteins are signal transducers and transcriptional modulators that mediate multiple signaling pathways. This protein functions in the negative regulation of BMP and TGF-beta/activin-signalling. Multiple transcript variants encoding different isoforms have been found for this gene

---

**Other  
Designations:** MAD (mothers against decapentaplegic, Drosophila) homolog 6,MAD, mothers against decapentaplegic homolog 6,Mothers against decapentaplegic, drosophila, homolog of, 6,SMAD, mothers against DPP homolog 6

---

## Gene Pathway

---

[TGF-beta signaling pathway](#)

## Related Disease

---

[Anemia, Sickle Cell Anemia, sickle cell](#) [Bacteremia](#) [Colorectal Neoplasms](#)  
[Diabetes Mellitus, Type 2](#) [Genetic Predisposition to Disease](#) [Hypertension, Pulmonary](#)  
[Keloid](#) [Obesity](#) [Ovarian Failure, Premature](#) [Polycystic Ovary Syndrome](#) [Puberty, Delayed](#)  
[Puberty, Precocious](#) [Thrombophilia](#) [Tobacco Use Disorder](#)

---

[服務條款](#) | [隱私權政策](#) | [著作及商標](#) | [網站地圖](#)

©2016 亞諾法生技股份有限公司 Abnova Corporation. 版權所有.