



SZABO SCANDIC

Part of Europa Biosite

Produktinformation



Forschungsprodukte & Biochemikalien



Zellkultur & Verbrauchsmaterial



Diagnostik & molekulare Diagnostik



Laborgeräte & Service

Weitere Information auf den folgenden Seiten!
See the following pages for more information!



Lieferung & Zahlungsart

siehe unsere [Liefer- und Versandbedingungen](#)

Zuschläge

- Mindermengenzuschlag
- Trockeneiszuschlag
- Gefahrgutzuschlag
- Expressversand

SZABO-SCANDIC HandelsgmbH

Quellenstraße 110, A-1100 Wien

T. +43(0)1 489 3961-0

F. +43(0)1 489 3961-7

mail@szabo-scandic.com

www.szabo-scandic.com

[linkedin.com/company/szaboscandic](https://www.linkedin.com/company/szaboscandic) 

SMAD6 monoclonal antibody (M08), clone 2E4

Catalog # : H00004091-M08

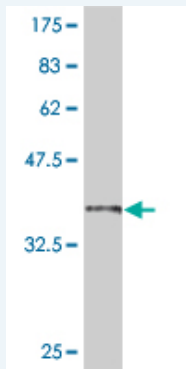
規格 : [100 ug]

[List All](#)

Specification

Product Description:	Mouse monoclonal antibody raised against a partial recombinant SMAD6.
Immunogen:	SMAD6 (NP_005576, 285 a.a. ~ 384 a.a) partial recombinant protein with GST tag. MW of the GST tag alone is 26 KDa.
Sequence:	RDEYKPLDLS DSTLSYTETEATNSLITAPGEFSDASMSPDATKPSHWCS VAYWEHRTRVGRLYAVYDQAVSIFYDLPGSGFCLGQLNLEQRSESVR RTR
Host:	Mouse
Reactivity:	Human
Isotype:	IgG2a Kappa

Quality Control Testing: Antibody Reactive Against Recombinant Protein.



Western Blot detection against Immunogen (36.74 KDa) .

Storage Buffer: In 1x PBS, pH 7.4

Storage Instruction: Store at -20°C or lower. Aliquot to avoid repeated freezing and thawing.

MSDS: [Download](#)

Datasheet: [Download](#)

Applications

Western Blot (Recombinant protein)

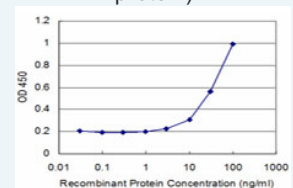
[Protocol Download](#)

Sandwich ELISA (Recombinant protein)

Application Image

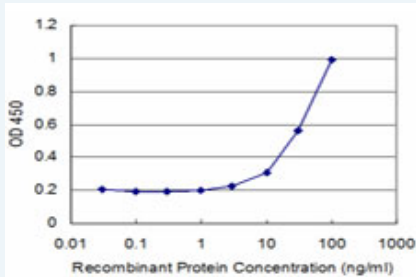
Western Blot (Recombinant protein)

Sandwich ELISA (Recombinant protein)



[enlarge](#)

ELISA



Detection limit for recombinant GST tagged SMAD6 is approximately 3ng/ml as a capture antibody.

 [Protocol Download](#)

ELISA

Gene Information

Entrez GeneID: [4091](#)

GeneBank [NM_005585](#)

Accession#:

Protein [NP_005576](#)

Accession#:

Gene Name: SMAD6

Gene Alias: HsT17432,MADH6,MADH7

Gene Description: SMAD family member 6

Description:

Omim ID: [602931](#)

Gene Ontology: [Hyperlink](#)

Gene Summary: The protein encoded by this gene belongs to the SMAD family of proteins, which are related to Drosophila 'mothers against decapentaplegic' (Mad) and C. elegans Sma. SMAD proteins are signal transducers and transcriptional modulators that mediate multiple signaling pathways. This protein functions in the negative regulation of BMP and TGF-beta/activin-signalling. Multiple transcript variants encoding different isoforms have been found for this gene

Other Designations: MAD (mothers against decapentaplegic, Drosophila) homolog 6,MAD, mothers against decapentaplegic homolog 6,Mothers against decapentaplegic, drosophila, homolog of, 6,SMAD, mothers against DPP homolog 6

Gene Pathway

[TGF-beta signaling pathway](#)

Related Disease

[Anemia, Sickle Cell Anemia, sickle cell](#) [Bacteremia](#) [Colorectal Neoplasms](#) [Diabetes Mellitus, Type 2](#) [Genetic Predisposition to Disease](#) [Hypertension, Pulmonary](#) [Keloid](#) [Obesity](#) [Ovarian Failure, Premature](#) [Polycystic Ovary Syndrome](#) [Puberty, Delayed](#) [Puberty, Precocious](#) [Thrombophilia](#) [Tobacco Use Disorder](#)