



# SZABO SCANDIC

Part of Europa Biosite

## Produktinformation



Forschungsprodukte & Biochemikalien



Zellkultur & Verbrauchsmaterial



Diagnostik & molekulare Diagnostik



Laborgeräte & Service

Weitere Information auf den folgenden Seiten!  
See the following pages for more information!



### Lieferung & Zahlungsart

siehe unsere [Liefer- und Versandbedingungen](#)

### Zuschläge

- Mindermengenzuschlag
- Trockeneiszuschlag
- Gefahrgutzuschlag
- Expressversand

### SZABO-SCANDIC HandelsgmbH

Quellenstraße 110, A-1100 Wien

T. +43(0)1 489 3961-0

F. +43(0)1 489 3961-7

[mail@szabo-scandic.com](mailto:mail@szabo-scandic.com)

[www.szabo-scandic.com](http://www.szabo-scandic.com)

[linkedin.com/company/szaboscandic](https://www.linkedin.com/company/szaboscandic) 

## SMAD6 293T Cell Transient Overexpression Lysate(Denatured)

Catalog # : H00004091-T02

規格 : [ 100 uL ]

[List All](#)

### Specification

**Transfected Cell Line:** 293T

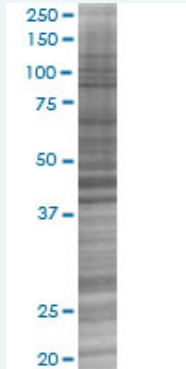
**Plasmid:** pCMV-SMAD6 full-length

**Host:** Human

**Theoretical MW (kDa):** 53.5

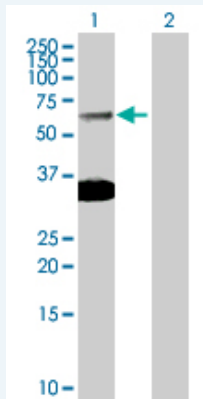
**Quality Control Testing:** Transient overexpression cell lysate was tested with Anti-SMAD6 antibody (H00004091-D01P) by Western Blots.

#### SDS-PAGE Gel



SMAD6 transfected lysate.

#### Western Blot



Lane 1: SMAD6 transfected lysate ( 53.50 KDa)

Lane 2: Non-transfected lysate.

**Storage Buffer:** 1X Sample Buffer (50 mM Tris-HCl, 2% SDS, 10% glycerol, 300 mM 2-mercaptoethanol, 0.01% Bromophenol blue)

**Storage Instruction:** Store at -80°C. Aliquot to avoid repeated freezing and thawing.

**MSDS:**  [Download](#)

### Applications

## Western Blot

### Gene Information

Entrez GeneID: [4091](#)

GeneBank [NM\\_005585.3](#)  
Accession#:

Protein [NP\\_005576.3](#)  
Accession#:

Gene Name: SMAD6

Gene Alias: HsT17432,MADH6,MADH7

Gene Description: SMAD family member 6

Omim ID: [602931](#)

Gene Ontology: [Hyperlink](#)

**Gene Summary:** The protein encoded by this gene belongs to the SMAD family of proteins, which are related to Drosophila 'mothers against decapentaplegic' (Mad) and C. elegans Sma. SMAD proteins are signal transducers and transcriptional modulators that mediate multiple signaling pathways. This protein functions in the negative regulation of BMP and TGF-beta/activin-signalling. Multiple transcript variants encoding different isoforms have been found for this gene

**Other Designations:** MAD (mothers against decapentaplegic, Drosophila) homolog 6,MAD, mothers against decapentaplegic homolog 6,Mothers against decapentaplegic, drosophila, homolog of, 6,SMAD, mothers against DPP homolog 6

### Gene Pathway

[TGF-beta signaling pathway](#)

### Related Disease

[Anemia, Sickle Cell Anemia, sickle cell](#) [Bacteremia](#) [Colorectal Neoplasms](#)  
[Diabetes Mellitus, Type 2](#) [Genetic Predisposition to Disease](#) [Hypertension, Pulmonary](#)  
[Keloid](#) [Obesity](#) [Ovarian Failure, Premature](#) [Polycystic Ovary Syndrome](#) [Puberty, Delayed](#)  
[Puberty, Precocious](#) [Thrombophilia](#) [Tobacco Use Disorder](#)

[服務條款](#) | [隱私權政策](#) | [著作及商標](#) | [網站地圖](#)

©2016 亞諾法生技股份有限公司 Abnova Corporation. 版權所有.