



# SZABO SCANDIC

Part of Europa Biosite

## Produktinformation



Forschungsprodukte & Biochemikalien



Zellkultur & Verbrauchsmaterial



Diagnostik & molekulare Diagnostik



Laborgeräte & Service

Weitere Information auf den folgenden Seiten!  
See the following pages for more information!



### Lieferung & Zahlungsart

siehe unsere [Liefer- und Versandbedingungen](#)

### Zuschläge

- Mindermengenzuschlag
- Trockeneiszuschlag
- Gefahrgutzuschlag
- Expressversand

### SZABO-SCANDIC HandelsgmbH

Quellenstraße 110, A-1100 Wien

T. +43(0)1 489 3961-0

F. +43(0)1 489 3961-7

[mail@szabo-scandic.com](mailto:mail@szabo-scandic.com)

[www.szabo-scandic.com](http://www.szabo-scandic.com)

[linkedin.com/company/szaboscandic](https://www.linkedin.com/company/szaboscandic) 

## SMAD7 polyclonal antibody (A01)

Catalog # : H00004092-A01

規格 : [ 50 uL ]

List All

### Specification

**Product Description:** Mouse polyclonal antibody raised against a partial recombinant SMAD7.

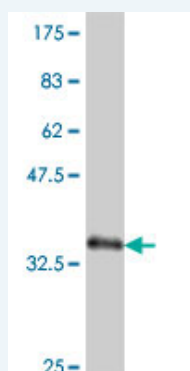
**Immunogen:** SMAD7 (NP\_005895, 160 a.a. ~ 260 a.a) partial recombinant protein with GST tag.

**Sequence:** CKVFRWPDLRHSSEVKRLCCCESYGKINPELVCCNPHLSRLCELESPP  
PPYSRYPMDFLKPTADCPDAVPSSAETGGTNYLAPGGLSDSQQLLLEPG  
DRSH

**Host:** Mouse

**Reactivity:** Human

**Quality Control Testing:** Antibody Reactive Against Recombinant Protein.



Western Blot detection against Immunogen (37.22 KDa) .

**Storage Buffer:** 50 % glycerol

**Storage Instruction:** Store at -20°C or lower. Aliquot to avoid repeated freezing and thawing.

**MSDS:** [Download](#)

**Datasheet:** [Download](#)

### Applications

**Western Blot (Recombinant protein)**

[Protocol Download](#)

**ELISA**

### Gene Information

**Entrez GeneID:** [4092](#)

**GeneBank Accession#:** [NM\\_005904](#)

### Application Image

Western Blot (Recombinant protein)

ELISA

**Protein Accession#:** [NP\\_005895](#)

**Gene Name:** SMAD7

**Gene Alias:** CRCS3,FLJ16482,MADH7,MADH8

**Gene Description:** SMAD family member 7

**Omim ID:** [114500](#), [602932](#)

**Gene Ontology:** [Hyperlink](#)

**Other Designations:** MAD (mothers against decapentaplegic, Drosophila) homolog 7, MAD, mothers against decapentaplegic homolog 7, Mothers against decapentaplegic, drosophila, homolog of, 7, SMAD, mothers against DPP homolog 7

### Gene Pathway

[TGF-beta signaling pathway](#)

### Related Disease

[Breast cancer](#) [Breast Neoplasms](#) [Carcinoma](#) [Carcinoma, Renal Cell](#) [Carcinoma, Transitional Cell](#) [Colon cancer](#) [Colonic Neoplasms](#) [Colorectal Neoplasms](#) [Genetic Predisposition to Disease](#) [Head and Neck Neoplasms](#) [Keloid](#) [Kidney Neoplasms](#) [Leukemia, Lymphocytic, Chronic, B-Cell](#) [Neoplasm Recurrence, Local](#) [Neoplasms, Second Primary](#) [Obesity](#) [Ovarian Failure](#) [Premature Polycystic Ovary Syndrome](#) [Puberty, Delayed](#)

... see more