



# SZABO SCANDIC

Part of Europa Biosite

## Produktinformation



Forschungsprodukte & Biochemikalien



Zellkultur & Verbrauchsmaterial



Diagnostik & molekulare Diagnostik



Laborgeräte & Service

Weitere Information auf den folgenden Seiten!  
See the following pages for more information!



### Lieferung & Zahlungsart

siehe unsere [Liefer- und Versandbedingungen](#)

### Zuschläge

- Mindermengenzuschlag
- Trockeneiszuschlag
- Gefahrgutzuschlag
- Expressversand

### SZABO-SCANDIC HandelsgmbH

Quellenstraße 110, A-1100 Wien

T. +43(0)1 489 3961-0

F. +43(0)1 489 3961-7

[mail@szabo-scandic.com](mailto:mail@szabo-scandic.com)

[www.szabo-scandic.com](http://www.szabo-scandic.com)

[linkedin.com/company/szaboscandic](https://www.linkedin.com/company/szaboscandic) 

**MAG purified MaxPab mouse polyclonal antibody (B01P)** MaxPab®

Catalog # : H00004099-B01P

規格 : [ 50 ug ]

List All

**Specification**

**Product Description:** Mouse polyclonal antibody raised against a full-length human MAG protein.

**Immunogen:** MAG (NP\_002352.1, 1 a.a. ~ 626 a.a) full-length human protein.

**Sequence:**  
MIFLTALPLFWIMISASRGGHWGAWMPSSISAFEGTCVSIPCRFDFPDEL  
RPAVWHGVVWFNSPYPKNYPPVWFKSRTQVWHESFQGRSRLLDLGLR  
NCTLLLSNVSPELGGKYFRGDLGGYNQYTFSEHSVLDIVNTPNIVPPE  
VVAGTEVEVSCMVPDNCPELRPELSWLGHEGLGEPAVLGRLREDEGT  
WVQVSLHLHFVPTREANGHRLGCQASFPNTTLQFEGYASMDVKYPPVIVE  
MNSSVEAIEGSHVSLLCGADSNPPPLL TWMRDGTVLREAVAESLLELEE  
VTPAEDGVYACLAENAYGQDNRTVGLSVMYAPWKPTVNGT MVAVEGET  
VSILCSTQSNPDPILTIFKEKQILSTVIYESELQLELPAVSPEDDGEYWCV  
ENQYGRATAFNLSVEFAPVLLLESHCAAARDTVQCLCVVKS NPEPSVA  
FELPSRNVTVNESEREFVYSERSGLVLT SILLRGQAQAPPRVICTARNL  
YGAKSLELPFQGAHRLMWAKIGPVGAVVAFALIAIVCYITQTRRKNMTE  
SPSFSAGDNPPVLFSSDFRISGAPEKYESERRLLGSRERLLGLRGPEPEL  
DLSYSHSDLGKRPTKDSYTLTEELAEYAEIRVK

**Host:** Mouse

**Reactivity:** Human

**Quality Control Testing:** Antibody reactive against mammalian transfected lysate.

**Storage Buffer:** In 1x PBS, pH 7.4

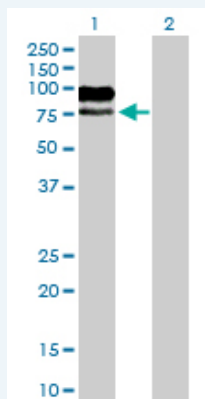
**Storage Instruction:** Store at -20°C or lower. Aliquot to avoid repeated freezing and thawing.

**MSDS:**  [Download](#)

**Datasheet:**  [Download](#)

**Applications**

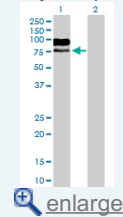
**Western Blot (Transfected lysate)**



Western Blot analysis of MAG expression in transfected 293T cell line ([H00004099-T01](#)) by MAG MaxPab polyclonal antibody.

**Application Image**

Western Blot (Transfected lysate)



Lane 1: MAG transfected lysate(68.86 KDa).  
Lane 2: Non-transfected lysate.

 [Protocol Download](#)

---

### Gene Information

---

**Entrez GeneID:** [4099](#)

**GeneBank  
Accession#:** [NM\\_002361.2](#)

**Protein  
Accession#:** [NP\\_002352.1](#)

**Gene Name:** MAG

**Gene Alias:** GMA,S-MAG,SIGLEC-4A,SIGLEC4A

**Gene  
Description:** myelin associated glycoprotein

**Omim ID:** [159460](#)

**Gene Ontology:** [Hyperlink](#)

**Gene Summary:** The protein encoded by this gene is a type I membrane protein and member of the immunoglobulin superfamily. It is thought to be involved in the process of myelination. It is a lectin that binds to sialylated glycoconjugates and mediates certain myelin-neuron cell-cell interactions. Two alternatively spliced transcripts encoding different isoforms have been described for this gene. [provided by RefSeq]

**Other  
Designations:** myelin-associated glycoprotein,sialic acid-binding immunoglobulin-like lectin 4A

---

### Gene Pathway

---

[Cell adhesion molecules \(CAMs\)](#)

---

### Related Disease

---

[Genetic Predisposition to Disease](#) [Multiple Sclerosis](#) [Schizophrenia](#) [Schizophrenia](#)

---

[服務條款](#) | [隱私權政策](#) | [著作及商標](#) | [網站地圖](#)

©2016 亞諾法生技股份有限公司 Abnova Corporation. 版權所有.