



SZABO SCANDIC

Part of Europa Biosite

Produktinformation



Forschungsprodukte & Biochemikalien



Zellkultur & Verbrauchsmaterial



Diagnostik & molekulare Diagnostik



Laborgeräte & Service

Weitere Information auf den folgenden Seiten!
See the following pages for more information!



Lieferung & Zahlungsart

siehe unsere [Liefer- und Versandbedingungen](#)

Zuschläge

- Mindermengenzuschlag
- Trockeneiszuschlag
- Gefahrgutzuschlag
- Expressversand

SZABO-SCANDIC HandelsgmbH

Quellenstraße 110, A-1100 Wien

T. +43(0)1 489 3961-0

F. +43(0)1 489 3961-7

mail@szabo-scandic.com

www.szabo-scandic.com

[linkedin.com/company/szaboscandic](https://www.linkedin.com/company/szaboscandic) 

MAGEB2 MaxPab mouse polyclonal antibody (B01) MaxPab®

Catalog # : H00004113-B01

規格 : [50 uL]

[List All](#)

Specification

Product Description: Mouse polyclonal antibody raised against a full-length human MAGEB2 protein.

Immunogen: MAGEB2 (NP_002355.1, 1 a.a. ~ 319 a.a) full-length human protein.

Sequence:
 MPRGQKSKLRAREKRRKARDETRGLNVPQVTEAEIEEEAPCCSSSVSG
 GAASSSPAAGIPQKPQRAPTTAAAAAGVSSTKSKKGAKSHQGEKNASS
 SQASTSTKSPSEDPLTRKSGSLVQFLLYKYKIKKSVTKGEMLKIVGKRFR
 EHFPEILKKASEGLSVVFGLELNKVNPNGHTYTFIDKVDLTDEESLLSSWD
 FPRRLLMPLLGVIFLNGNSATEEEIWEFLNMLGVYDGEHVSFGEVWK
 LITKDLVQEKYLEYKQVPSDDPPRFQFLWGPARYAETSKMKVLEFLAKV
 NGTTPCAFPTHYEEALKDEEKAGV

Host: Mouse

Reactivity: Human

Quality Control Testing: Antibody reactive against mammalian transfected lysate.

Storage Buffer: No additive

Storage Instruction: Store at -20°C or lower. Aliquot to avoid repeated freezing and thawing.

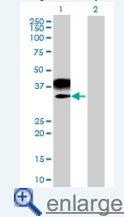
Note: For IHC and IF applications, antibody purification with Protein A will be needed prior to use.

MSDS: [Download](#)

Datasheet: [Download](#)

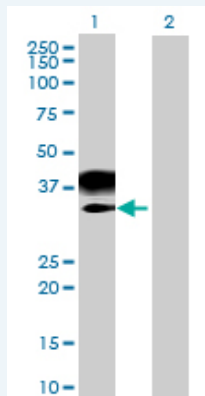
Application Image

Western Blot (Transfected lysate)



Applications

Western Blot (Transfected lysate)



Western Blot analysis of MAGEB2 expression in transfected 293T cell line (H00004113-T01) by MAGEB2 MaxPab polyclonal antibody.

Lane 1: MAGEB2 transfected lysate(35.09 KDa).

Lane 2: Non-transfected lysate.

Gene Information

Entrez GeneID: [4113](#)

**GeneBank
Accession#:** [NM_002364](#)

**Protein
Accession#:** [NP_002355.1](#)

Gene Name: MAGEB2

Gene Alias: DAM6,MAGE-XP-2,MGC26438

**Gene
Description:** melanoma antigen family B, 2

Omim ID: [300098](#)

Gene Ontology: [Hyperlink](#)

Gene Summary: This gene is a member of the MAGEB gene family. The members of this family have their entire coding sequences located in the last exon, and the encoded proteins show 50 to 68% sequence identity to each other. The promoters and first exons of the MAGEB genes show considerable variability, suggesting that the existence of this gene family enables the same function to be expressed under different transcriptional controls. This gene is localized in the DSS (dosage-sensitive sex reversal) critical region. It is expressed in testis and placenta, and in a significant fraction of tumors of various histological types. The MAGEB genes are clustered on chromosome Xp22-p21. [provided by RefSeq]

**Other
Designations:** DSS/AHC critical interval MAGE superfamily
6,OTTHUMP00000023098,melanoma-associated antigen B2
