



# SZABO SCANDIC

Part of Europa Biosite

## Produktinformation



Forschungsprodukte & Biochemikalien



Zellkultur & Verbrauchsmaterial



Diagnostik & molekulare Diagnostik



Laborgeräte & Service

Weitere Information auf den folgenden Seiten!  
See the following pages for more information!



### Lieferung & Zahlungsart

siehe unsere [Liefer- und Versandbedingungen](#)

### Zuschläge

- Mindermengenzuschlag
- Trockeneiszuschlag
- Gefahrgutzuschlag
- Expressversand

### SZABO-SCANDIC HandelsgmbH

Quellenstraße 110, A-1100 Wien

T. +43(0)1 489 3961-0

F. +43(0)1 489 3961-7

[mail@szabo-scandic.com](mailto:mail@szabo-scandic.com)

[www.szabo-scandic.com](http://www.szabo-scandic.com)

[linkedin.com/company/szaboscandic](https://www.linkedin.com/company/szaboscandic) 

## MAGEB2 293T Cell Transient Overexpression Lysate(Denatured)

Catalog # : H00004113-T01

規格 : [ 100 uL ]

List All

### Specification

**Transfected Cell Line:** 293T

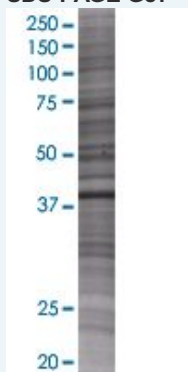
**Plasmid:** pCMV-MAGEB2 full-length

**Host:** Human

**Theoretical MW (kDa):** 35.3

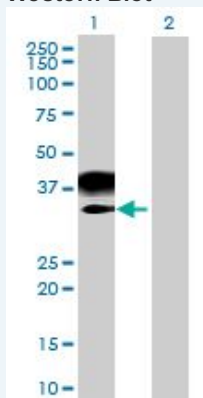
**Quality Control Testing:** Transient overexpression cell lysate was tested with Anti-MAGEB2 antibody ([H00004113-B01](#)) by Western Blots.

#### SDS-PAGE Gel



MAGEB2 transfected lysate.

#### Western Blot



Lane 1: MAGEB2 transfected lysate ( 35.3 KDa)

Lane 2: Non-transfected lysate.

**Storage Buffer:** 1X Sample Buffer (50 mM Tris-HCl, 2% SDS, 10% glycerol, 300 mM 2-mercaptoethanol, 0.01% Bromophenol blue)

**Storage Instruction:** Store at -80°C. Aliquot to avoid repeated freezing and thawing.

**MSDS:**  [Download](#)

### Applications

## Western Blot

### Gene Information

**Entrez GeneID:** [4113](#)

**GeneBank  
Accession#:** [NM\\_002364](#)

**Protein  
Accession#:** [NP\\_002355.1](#)

**Gene Name:** MAGEB2

**Gene Alias:** DAM6,MAGE-XP-2,MGC26438

**Gene  
Description:** melanoma antigen family B, 2

**Omim ID:** [300098](#)

**Gene Ontology:** [Hyperlink](#)

**Gene Summary:** This gene is a member of the MAGEB gene family. The members of this family have their entire coding sequences located in the last exon, and the encoded proteins show 50 to 68% sequence identity to each other. The promoters and first exons of the MAGEB genes show considerable variability, suggesting that the existence of this gene family enables the same function to be expressed under different transcriptional controls. This gene is localized in the DSS (dosage-sensitive sex reversal) critical region. It is expressed in testis and placenta, and in a significant fraction of tumors of various histological types. The MAGEB genes are clustered on chromosome Xp22-p21. [provided by RefSeq]

**Other  
Designations:** DSS/AHC critical interval MAGE superfamily  
6,OTTHUMP00000023098,melanoma-associated antigen B2

[服務條款](#) | [隱私權政策](#) | [著作及商標](#) | [網站地圖](#)

©2016 亞諾法生技股份有限公司 Abnova Corporation. 版權所有.